

EPSON[®]
EXCEED YOUR VISION



Epson EH-TW6000W HOME CINEMA PROJECTOR



Wi**HD**

3D

Includes
2 pairs of
3D glasses!

2D and 3D, Full HD 1080p Home Cinema Projector with Integrated Speakers and WirelessHD.

The Epson EH-TW6000W, with WirelessHD, brings the power of 3D right to your living room. Immerse yourself in eye-popping 3D adventures, with 2200 lumens colour and white light output¹, Full HD 1080p performance and a remarkable contrast ratio of up to 40,000:1. Enjoy amazing audio with two powerful, built-in 10W stereo speakers. This high-value home cinema projector also features great 2D performance. It's never been easier to entertain family and friends with a true-to-life, 3D cinematic experience.

A true cinematic experience — 2D and 3D, Full HD 1080p technology puts you right in the middle of exciting, lifelike adventures

Super bright and true-to-life colors — 2200 lumens colour and white light output¹ and a contrast ratio of up to 40,000:1

Rich, vibrant colour and reliable performance — 3LCD, 3-chip technology



Epson EH-TW6000W

HOME CINEMA PROJECTOR

The best-selling projectors in the world.

Epson offers a wide range of high-quality projectors to meet almost any need. Built with image quality and reliability in mind, Epson high-definition projectors take home cinema entertainment to a whole new level, featuring colour and detail that's sure to win rave reviews from friends and family alike. With the vivid realism of Epson 3LCD technology, these projectors will make your home the hottest ticket in town.



3LCD technology – for quality and colour that's beyond amazing

- 3 chips for full-time, vibrant colour
- 25% less electricity required per lumen of brightness when compared to 1-chip DLP projectors²
- Over 20 years of road-tested reliability built into every projector



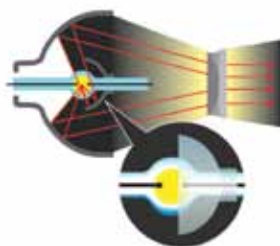
Amazing colour and white light output

The Epson EH-TW6000W delivers 2200 lumens of colour light output and 2200 lumens of white light output¹ for rich, colourful images. Whether you're projecting images with deep, dark colours or bright whites, you get consistent light output.



Energy-efficient E-TORL[®] lamp exclusively from Epson

- Delivers more lumens per watt and lasts up to 5000 hours³
- Minimizes both light diffraction and light leakage
- Maximizes your viewing time, while minimizing your costs



Epson – 3LCD

Other – DLP



^High colour light output

^Low colour light output

Actual photographs of images taken from two competing projectors run in default mode. Price, resolution and brightness (white light output) are the same for both projectors.

C²Fine™ technology delivers a higher contrast ratio

C²Fine offers smooth, uniform images with exceptional contrast for better image quality. Based on this new phase-compensation technology, light leakage is eliminated, and, when combined with the auto iris, this technology allows for contrast ratios of up to 40,000:1.



^ With C²Fine



^ Without C²Fine

Advanced Auto Iris technology

Epson Auto Iris technology adjusts the aperture to provide optimum contrast and brightness for each scene.

Better Products for a Better Future™

For more information on Epson's environmental programs, go to www.epson.com.au/company/environment



Amazing 3D performance

Bright 3D Drive technology

Enjoy thrilling 3D adventures right in the comfort of your living room. Featuring Bright 3D Drive technology, Epson's 480 Hz drive system minimizes the blackout time of 3D glasses and provides greater brightness of 3D images.



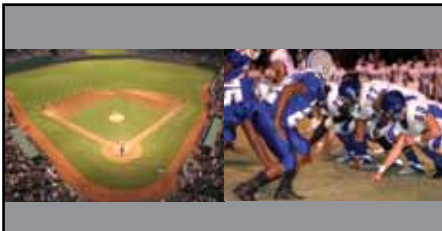
WirelessHD enabled

- Transmitter included and receiver built into the projector to transmit uncompressed high-definition video over short distances
- Supports the standard promoted by the WirelessHD consortium

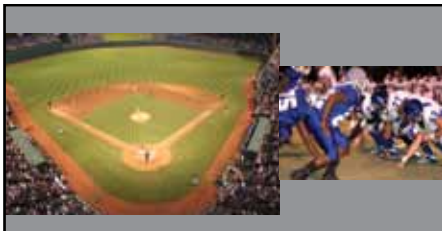


Split Screen⁴ feature

Project two images (video or still) side-by-side from two different sources simultaneously in 2D mode. Choose from three layout options. You can swap the images, choose the source for the audio and even display closed captioning if the source signal includes it.



Layout Option 1:
50-50% Split Screen



Layout Option 2:
Main image on left



Layout Option 3:
Main image on right

Epson EH-TW6000W

Features

- **A true cinematic experience** — 2D and 3D, Full HD 1080p technology puts you right in the middle of exciting, lifelike adventures
- **Super bright and saturated colours** — 2200 lumens colour and white light output¹, and a contrast ratio up to 40,000:1
- **Rich, vibrant colour and reliable performance** — 3LCD, 3-chip technology
- **WirelessHD enabled** — transmit and receive HD 1080p content wirelessly over short distances
- **Captivating sound** — two built-in 10 W stereo speakers for amazing audio
- **Sleek design** — fits in any setting
- **Split Screen⁴ feature** — project two images side-by-side from two different sources in 2D mode
- **Outstanding support** — two-year limited warranty
- **3D glasses** — includes two pairs of active shutter 3D glasses

New, innovative horizontal keystone correction

- Create perfectly rectangular images even with unique positioning of the projector
- Horizontal (+/- 30 degrees) keystone correction for the ultimate in positioning flexibility
- Project images without having to put a stand or table in the center of the room

3D glasses

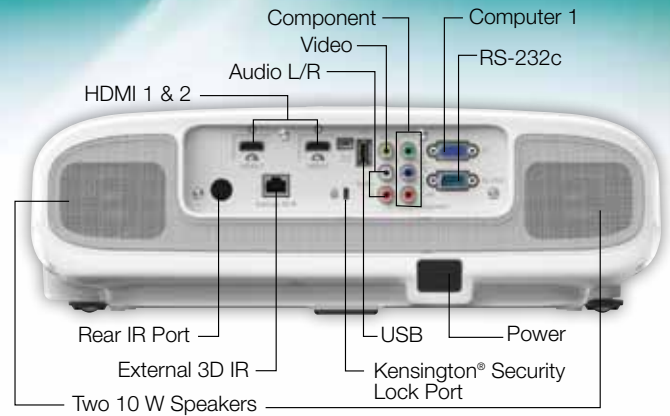
Includes two pairs of active shutter 3D glasses



Epson EH-TW6000W

Home Cinema Projector

Product Name	Product Code
Epson EH-TW6000W (Aust only)	V11H450053
Epson EH-TW6000W (NZ only)	V11H450153



Specifications

Projection System
EPSON 3LCD, 3-chip technology

Projection Method
Front / Rear / Ceiling mount

Product Colour
White and Grey

Driving Method
EPSON Poly-silicon TFT Active Matrix, 0.61-inch wide panel with MLA

Projected Output
HD, 2D, 3D, 1080p

Pixel Number
2,073,600 dots (1920 x 1080) x 3

Colour Light Output¹
2200 lumens

White Light Output¹
2200 lumens (ISO 21118 Standard)

Aspect Ratio
Native 16:9 widescreen (4:3 resize)
Compatible with 4:3 and 2.35:1 video formats with Normal, Full or Zoom Modes

Native Resolution
1080p (1920 x 1080)

Resize
16:10, 4:3

Lamp Type
230 W UHE (E-TORL)

Lamp Life³
Up to 5000 hours (ECO mode)
Up to 4000 hours (Normal mode)

Throw Ratio Range
1.32 – 2.15

Size (projected distance)
30" to 300" (0.87 to 8.9m) zoom: wide
30" to 300" (1.42 to 14.5m) zoom: tele

Keystone Correction
Vertical: ± 30 degrees (Auto)
Horizontal: ± 30 degree (Slide bar)

Contrast Ratio
Up to 40,000:1

Colour Reproduction
Full-colour (1.07 billion colours)

Colour Processing
Full 10 bit (Digital Only)

Projection Lens

Type
Manual Focus / Manual Zoom

F-number
1.51 – 1.99

Focal Length
18.2 – 29.2 mm, widescreen image size
(projected distance): 100" diagonal
(wide: 9.7" – tele: 15.7")

Zoom Ratio
1.0 – 1.6 Manual

Other

Display Performance
1920 x 1080 native 1080p; HD, 2D, 3D

Colour Modes
2D: Dynamic, Living room, Natural, Cinema, Auto
3D: 3D Dynamic, 3D Cinema

Input Signal
DVD region code 1
Composite: NTSC / NTSC4.43 / PAL / M-PAL / N-PAL / PAL60 / SECAM
Component: 480i / 576i / 480p / 576p / 720p / 1080i / 1080p
HDMI: TMDS
HD-DVD and Blu-ray[®] (external source only)

Terminal Inputs
1 RCA (composite), 3 RCA (component), 2 RCA (1 audio L/R) stereo, 1 VGA D-sub 15 pin (computer input), USB Type A, USB Type B (service only), 2 HDMI, 1 RS-232c

Terminal Outputs
RJ-45 (external 3D emitter)

Video Compatibility
2D: WXGA, SXGA, XGA, SVGA, VGA;
3D: HDTV750p, HDTV1125i, HDTV1125p

Computer Compatibility
PC, Mac[®]

Speakers
Two integrated 10 W stereo speakers

Media Format
16:9

Operating Temperature
5 °C to 35 °C (41 °F to 95 °F)

Other (continued)

Power Supply Voltage
100 – 240 VAC ± 10% , 50/60 Hz

Power Consumption
358 W (Normal Mode)
274 W (ECO Mode)
6.3 W Standby (Communication On)
0.35 W Standby (Communication Off)

Fan Noise 24 – 32 dB

Security Kensington Security Lock Port

Dimensions (W x D x H)

Including feet 420 x 365 x 137mm
Weight 6.2kg

Remote Control

Features
Front and rear directional

Operating Angle
± 30 degrees

Operating Distance
32 feet (10 meters)

Parental Controls
Power Button Lock
Hinders projector from being turned on without parental supervision

WirelessHD Transmitter

Specifications

Power Supply
AC adapter, 100 – 240 VAC, 50/60 Hz, 5V2A Wall Mount type

Power Consumption
5 V, 1.1 A

Operating Temperature
5°C to 35°C

Interface
HDMI Type A female

Dimensions
60.9 x 157.5 x 60.4mm

Weight
212.6g

What's in the Box

Epson EH-TW6000W projector, two pairs of Epson active shutter 3D glasses, power cord, two HDMI cable clamps, WirelessHD transmitter with AC adapter, remote control with AA batteries, CD ROM with users guide link

Optional Accessories

Genuine EPSON lamp	V13H010L68
Replacement air filter	V13H134A38
3D glasses	V12H483001
External 3D IR emitter	V12H484001
Projector ceiling mount	V12H003B22

1 Colour and white light output will vary depending on mode selected. White light output measured using ISO 21118 standard.
2 Data source: ProjectorCentral.com Jan. 2011. Average of 1038 shipping models for which manufacturers provided lumens and total power data, all resolutions and brightness levels.
3 Lamp life will vary depending upon mode selected, environmental conditions and usage. Lamp brightness decreases over time.
4 The Split Screen feature can only use one digital input source at a time. The other source must be an analog source (PC/Component or Composite video). However, two different analog input sources can be used at the same time.