



## **Epson EH-TW8000** HOME CINEMA PROJECTOR



**3D**

Includes  
2 pairs of  
3D glasses!

### **Ultra-bright, 2D and 3D, Full HD 1080p Home Cinema Projector.**

The Epson EH-TW8000 brings the power of 3D right to your living room with Bright 3D Drive technology and Full HD 1080p performance. Immerse yourself in eye-popping cinematic adventures with 2400 lumens colour and white light output<sup>1</sup> and an astounding contrast ratio of up to 200,000:1. A state-of-the-art performer, the EH-TW8000 features a built-in cinema filter and Fujinon<sup>®</sup> lens for movie viewing the way filmmakers intended. Take advantage of the Split Screen<sup>2</sup> feature on large screens up to 300 inches. This high-value home cinema projector also features great 2D performance as well as 2D-to-3D conversion. It's never been easier to entertain family and friends with a true-to-life, 3D cinematic experience.

**Split Screen<sup>2</sup> feature** — project two images side-by-side from two different sources in 2D mode

**Amazingly sharp, crisp images** — Contrast ratio of up to 200,000:1



# Epson EH-TW8000

## HOME CINEMA PROJECTOR

### The best-selling projectors in the world.

Epson offers a wide range of high-quality projectors to meet almost any need. Built with image quality and reliability in mind, Epson high-definition projectors take home cinema entertainment to a whole new level, featuring colour and detail that's sure to win rave reviews from friends and family alike. With the vivid realism of Epson 3LCD technology, these projectors will make your home the hottest ticket in town.



#### 3LCD technology – for quality and colour that's beyond amazing

- 3 chips for full-time, vibrant colour
- 25% less electricity required per lumen of brightness when compared to 1-chip DLP projectors<sup>3</sup>
- Over 20 years of road-tested reliability built into every projector



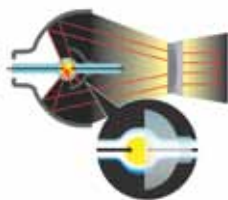
#### Amazing colour and white light output

The Epson EH-TW8000 delivers 2400 lumens of colour light output and 2400 lumens of white light output<sup>1</sup> for rich, colourful images. Whether you're projecting images with deep, dark colours or bright whites, you get consistent light output.



#### Energy-efficient E-TORL<sup>®</sup> lamp exclusively from Epson

- Delivers more lumens per watt and lasts up to 5000 hours<sup>4</sup>
- Minimizes both light diffraction and light leakage
- Maximizes your viewing time, while minimizing your costs



Epson — 3LCD

Other — DLP



▲ High colour light output

▲ Low colour light output

Actual photographs of images taken from two competing projectors run in default mode. Price, resolution and brightness (white light output) are the same for both projectors.

#### Crystal-clear detail

Achieve astounding, eye-popping detail with an incredible contrast ratio up to 200,000:1.



#### Advanced Auto Iris technology

Epson Auto Iris technology adjusts the aperture to provide optimum contrast and brightness for each scene.

Better Products for a Better Future™

For more information on Epson's environmental programs, go to [www.epson.com.au/company/environment](http://www.epson.com.au/company/environment)

# Amazing 3D performance

## Bright 3D Drive technology

Enjoy thrilling 3D adventures right in the comfort of your living room. Featuring Bright 3D Drive technology, Epson's 480 Hz drive system minimizes the blackout time of 3D glasses and provides greater brightness of 3D images.

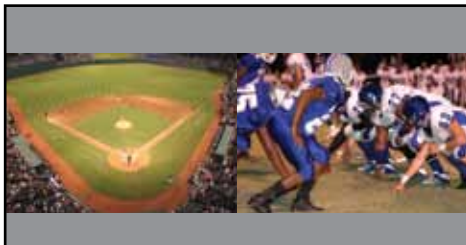


## OptiCinema™ lens for outstanding picture quality and easy setup

The OptiCinema lens system is a precision, high-quality, optical grade system. Co-developed with Fujinon, a top supplier of precision camera optics to the world's leading HD camera makers, this system offers excellent picture uniformity and clarity across the screen. This lens system also provides precision focus with a 2.1x zoom ratio. And, it delivers maximum installation flexibility with 96% vertical and 47% horizontal lens shift (without image distortion).

## Split Screen<sup>2</sup> feature

Project two images (video or still) side-by-side from two different sources simultaneously in 2D mode. Choose from three layout options. You can swap the images, choose the source for the audio and even display closed captioning if the source signal includes it.



Layout Option 1:  
50-50% Split Screen



Layout Option 2:  
Main image on left



Layout Option 3:  
Main image on right



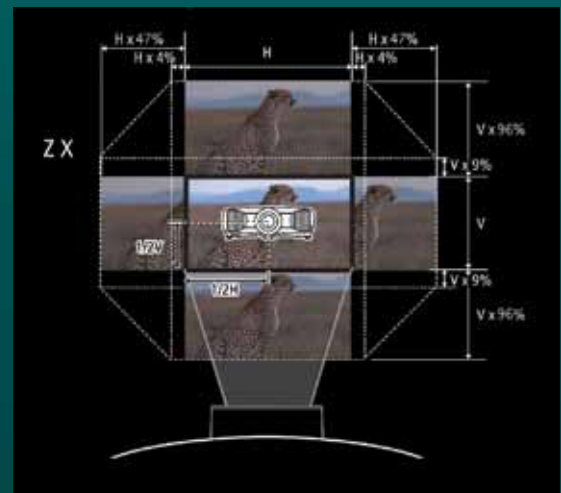
## Epson EH-TW8000

### Features

- **A true cinematic experience** — 2D and 3D, Full HD 1080p technology puts you right in the middle of exciting, lifelike adventures
- **Astounding brightness and detail** — 2400 lumens colour/white light output<sup>1</sup>, and an amazing contrast ratio up to 200,000:1
- **Rich, vibrant colour and reliable performance** — 3LCD, 3-chip technology
- **Accurate and exceptional picture quality** — built-in cinema filter and Fujinon lens
- **Sleek design** — fits in any setting
- **Split Screen<sup>2</sup> feature** — project two images side-by-side from two different sources in 2D mode
- **2D-to-3D conversion** — easily transform 2D images to spectacular 3D
- **Amazingly sharp, crisp images** — motorized pixel alignment
- **Outstanding support** — 2-year limited warranty

## Home entertainment made easy with flexible installation

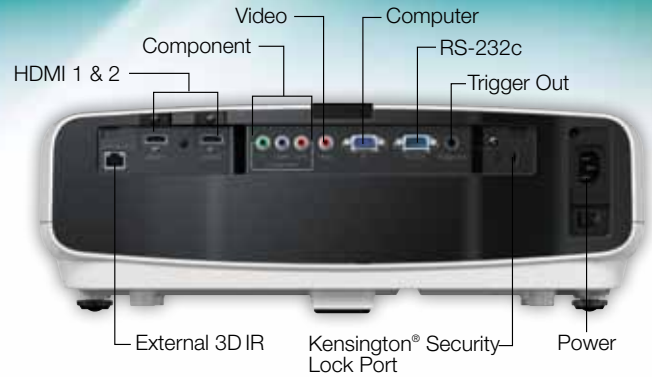
The Epson EH-TW8000 projector provides astonishing placement flexibility with a 2.1x zoom ratio and vertical and horizontal lens shift (without image distortion), plus easy vertical keystone correction.



# Epson EH-TW8000

## Home Cinema Projector

Product Name	Product Code
Epson EH-TW8000	V11H398053



### Specifications

**Projection System**  
EPSON 3LCD, 3-chip technology

**Projection Method**  
Front / Rear / Ceiling mount

**Product Colour**  
White and Black

**Driving Method**  
EPSON Poly-silicon TFT Active Matrix, 0.74-inch wide panel with MLA

**Projected Output**  
HD, 2D, 3D, 1080p

**Pixel Number**  
2,073,600 dots (1920 x 1080) x 3

**Colour Light Output<sup>1</sup>**  
2400 lumens

**White Light Output<sup>1</sup>**  
2400 lumens (ISO 21118 Standard)

**Aspect Ratio**  
Native 16:9 widescreen (4:3 resize)  
Compatible with 4:3 and 2.35:1 video formats with Normal, Full or Zoom Modes

**Native Resolution**  
1080p (1920 x 1080)

**Resize**  
16:10, 4:3

**Lamp Type**  
230 W UHE (E-TORL)

**Lamp Life<sup>4</sup>**  
Up to 5000 hours (ECO mode)  
Up to 4000 hours (Normal mode)

**Throw Ratio Range**  
1.34 – 2.87

**Size (projected distance)**  
30" – 300" (0.87 to 9.03m) zoom: wide  
30" – 300" (1.88 to 19.15m) zoom: tele

**Keystone Correction**  
Vertical: ± 30 degrees (Manual)

**Contrast Ratio**  
Up to 200,000:1

**Colour Reproduction**  
Full-colour (1.07 billion colours)

**Colour Processing**  
Full 10 bit (Partial 12 bit)

### Projection Lens

**Type**  
Manual Focus / Manual Zoom

**F-number**  
2.0 – 3.17

**Focal Length**  
22.5 – 47.2 mm, widescreen image size (projected distance): 100" diagonal (wide: 9.8" – tele: 20.9")

**Zoom Ratio**  
1.0 – 2.1

**Lens Shift**  
Vertical: -96.3 to +96.3;  
Horizontal: -47.1 to +47.1

**Lens Cover**  
Powered, Slide Lens Shutter

### Other

**Display Performance**  
1920 x 1080 native (1080p); HD, 2D, 3D, 2D to 3D conversion

**Colour Modes**  
2D: Dynamic, Living room, Natural, Cinema  
3D: 3D Dynamic, 3D Cinema

**EPSON Cinema Filter**  
Automatically adjusts to colour mode; (On: Natural/Cinema; Off: Dynamic/Living Room/3D Dynamic/3D Cinema)

**Auto Iris**  
Automatically adjusts to video source; User selectable (High speed/Normal/Off)

**Input Signal**  
Composite: NTSC / NTSC4.43 / PAL / M-PAL / N-PAL / PAL60 / SECAM  
Component: 480i / 576i / 480p / 576p / 720p / 1080i / 1080p  
HDMI: TMDS

**Terminal Inputs**  
1 RCA (composite), 3 RCA (component), 1 VGA D-sub 15 pin (computer input), 2 HDMI, 1 RS-232c

**Terminal Outputs**  
Trigger On/Off (3.5 mm stereo jack)  
RJ-45 (external 3D emitter)

**Video Compatibility**  
2D: WXGA, SXGA, XGA, SVGA, VGA;  
3D: HDTV750p, HDTV1125i, HDTV1125p

**Computer Compatibility**  
PC, Mac®

### Other (continued)

**Operating Temperature**  
5 °C to 35 °C (41 °F to 95 °F)

**Power Supply Voltage**  
100-240 VAC ± 10%, 50/60 Hz

**Power Consumption**  
348 W (Normal Mode)  
263 W (ECO Mode)  
0.37 W Standby (Communication On)  
0.37 W Standby (Communication Off)

**Fan Noise**  
22 – 32 dB

**Security**  
Kensington Security Lock Port

### Dimensions (W x D x H)

**Including feet** 468 x 158 x 395mm  
**Weight** 8.3kg

### Remote Control

**Features**  
Front and rear directional

**Operating Distance**  
32 feet (10 meters)

**Operating Angle**  
-30 degrees to + 30 degrees

**Parental Controls**  
**Power Button Lock**  
Hinders projector from being turned on without parental supervision

### What's in the Box

Epson EH-TW8000 projector, two pairs of Epson active shutter 3D glasses, power cord, two HDMI cable clamps, remote control with AA batteries, CD ROM with users guide link

### Optional Accessories

Genuine EPSON lamp	V13H010L69
Replacement air filter	V13H134A39
3D glasses	V12H483001
External 3D IR emitter	V12H484001
Projector ceiling mount	V12H003B22

1 Colour and white light output will vary depending on mode selected. White light output measured using ISO 21118 standard.  
2 The Split Screen feature can only use one digital input source at a time. The other source must be an analog source (PC/Component or Composite video). However, two different analog input sources can be used at the same time.  
3 Data source: ProjectorCentral.com Jan. 2011. Average of 1038 shipping models for which manufacturers provided lumens and total power data, all resolutions and brightness levels.  
4 Lamp life will vary depending upon mode selected, environmental conditions and usage. Lamp brightness decreases over time.