



Epson Stylus® Pro 3880

An affordable, compact innovative A2 printer
for creative professionals

Anywhere, Every Time: Meeting All Your Needs

The Epson Stylus® Pro 3880 is a robust partner for professional photographers and graphic arts professionals. These scenes demonstrate the advantages and solutions provided by this high-performance printer to meet real user needs.

STUDIO/OFFICE Commercial Photographer

After shooting photos, data verification and proofing can be done immediately, enhancing workflow efficiency.



PRE-PRESS Graphic Arts Professionals

The ability to consistently produce high quality, colour accurate digital proofs is key to ensuring happy clients and increasing business. The Epson Stylus® Pro 3880 using UltraChromeK3® Ink with Vivid Magenta provides all the advantages of the professional Epson printer range, but with a compact footprint to fit even small offices.



HOME Advanced Amateur Photographer

The compact, stylish body of the Epson Stylus® Pro 3880 is at home in any decor.

The addition of the Epson Stylus® Pro 3880 instantly transforms your living room into a digital darkroom. Professional quality output is at your fingertips in any workspace. Photo printing becomes a pleasure, and the results make stylish decorations or gifts for friends, family, or colleagues.



GALLERY Artist/Photographer

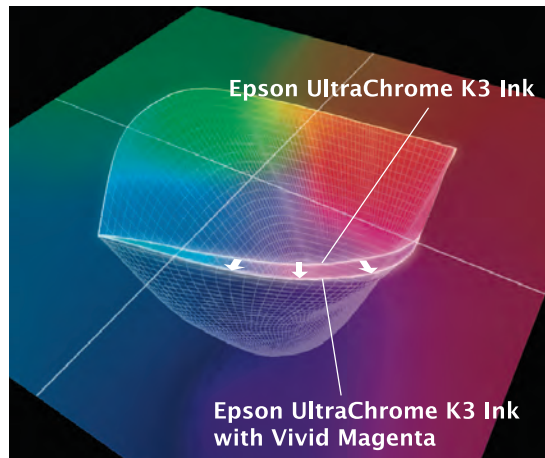
The Epson Stylus® Pro 3880 produces exhibition-quality prints for galleries. Supporting matte and fine art paper in addition to glossy media, the printer provides an extended range of expression for exhibition pieces.



Expanded Colour Gamut

Potential of New Epson UltraChromeK3® Inks with Vivid Magenta

Epson UltraChromeK3® inks provide an extremely wide gamut, making accurate colour rendition possible with unique, high-density pigments. Now, with the addition of newly formulated Vivid Magenta and Vivid Light Magenta inks, they offer an even broader colour gamut with enhanced expression ranges to meet the highest professional expectations.



Epson UltraChromeK3



Epson UltraChromeK3 VM/VLM



**Comparative images for reference*

New Vivid Magenta/ Vivid Light Magenta Pigments

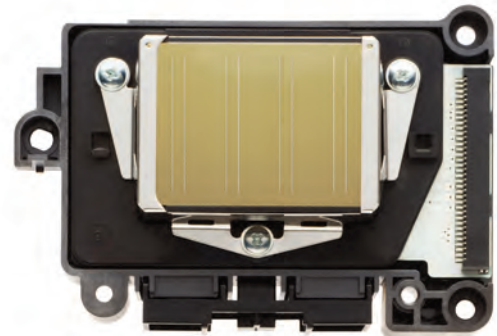
Newly developed Vivid Magenta and Vivid Light Magenta inks add vibrancy and impact to image quality and expand the range of artistry, especially in the deep blue-magenta range.



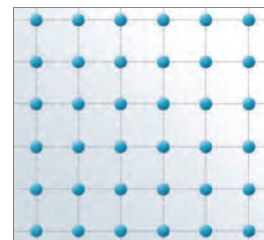
Image Quality

MicroPiezo® Print Head

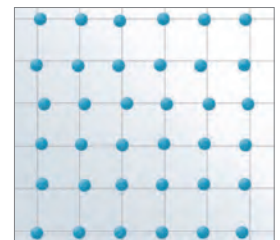
The Epson Stylus® Pro 3880 is equipped with the latest version of Epson's exclusive MicroPiezo print head. Optimised to ensure fast throughput and superior image quality with Epson UltraChromeK3® inks, the head offers one-inch coverage with each pass. Its innovative ink-repellent coating maintains precise droplet delivery under high workloads.



Comparison of Droplet Placement



With ink-repellant coating



Without ink-repellant coating

High-Volume Ink Cartridge

The Epson Stylus® Pro 3880 incorporates nine independent, high-volume 80ml ink cartridges that increase the productivity of large-volume print runs while decreasing time and expense.



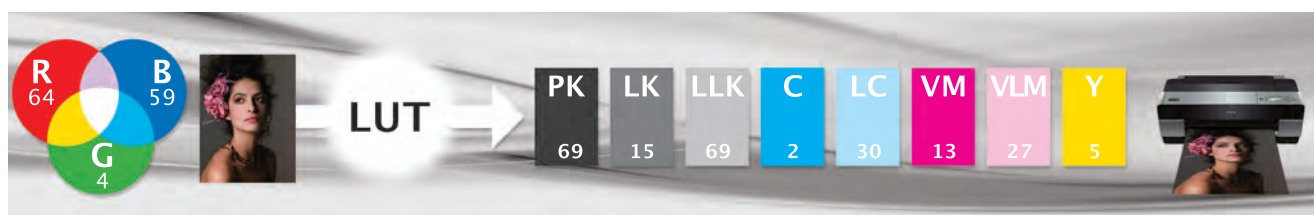
Ultimate Colour Optimisation with the Epson LUT Technology Algorithm

Look-Up Table (LUT)

In colour printing, colour information (RGB or CMYK) is converted into information on which inks to blend in which amounts. This conversion determines image quality. The extremely complex conversion calculations require a massive reference table of colour data called a Look-Up Table (LUT). For this reason, Epson developed an innovative, powerful LUT. The Epson LUT enables the Epson Stylus® Pro 3880 printer to select the best ink combinations automatically with optimal use of the extensive gamut range for exact expression of the desired colour.

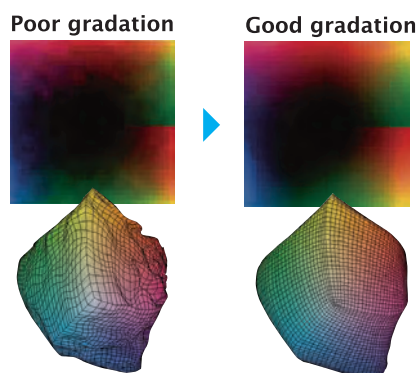
Benefits of Epson High-Performance LUT Technology

Developed through advanced research conducted jointly with world authorities on colour science at the Munsell Color Science Laboratory (MCSL) of the Rochester Institute of Technology, Epson LUT Technology not only maximises colour gamut, but provides greater fidelity to the original image. Epson LUT technology offers three other major benefits that improve print quality: smoother gradation, finer grain, and superior colour consistency.



Smooth Colour Gradation

Printing photographs requires smooth transition from colour to colour, with subtle expression of shades. The smoothness of these gradations is a major factor determining image quality. Epson LUT technology optimises the gamut and provides smooth, natural colour gradations from the deepest shadows to the lightest highlights.



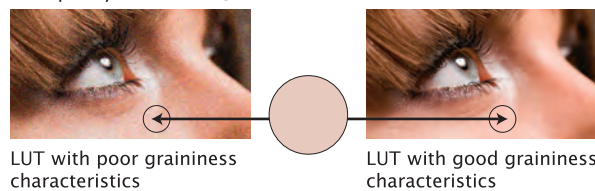
Colour gamut with nonsmooth LUT gradation

Colour gamut with smooth LUT gradation

Virtually No Graininess

Graininess can be especially noticeable in skin tones in portraits of commercial photographs. But that is no longer a problem, since Epson LUT technology reduces graininess by optimising the amounts of inks to blend. Virtually no graininess is perceived, even up close.

LUT quality affects the graininess of skin tones.

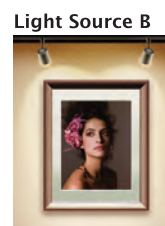
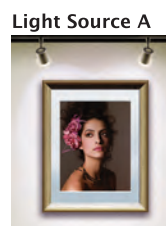


LUT with poor graininess characteristics

LUT with good graininess characteristics

Superior Colour Consistency

Epson LUT technology solves the problem of light effects on colour consistency. The prints appear identical under any light source.



Artistic Black-and-White Prints



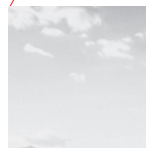
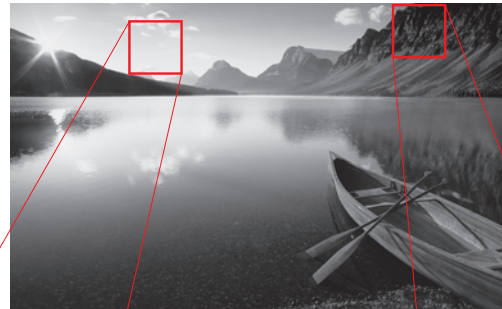
Stunning Monochromes

Proprietary Epson technology employing three shades of black is the key to truly professional black-and-white photo printing. A much richer range of tonal expression is possible with no twists or casts in black-and-white photo reproduction, giving life-like artistry to the prints.

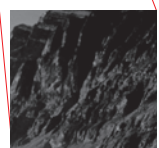
Deeper Shadows, Lighter Highlights

The lightest black ink in the Epson UltraChromeK3® Ink colour palette is the key to extremely smooth black-and-white tonal gradations, from the deepest shadows to the lightest highlights, resulting in excellent volume perception.

Epson UltraChrome K3 Ink



Magnified



Magnified

Richer, Deeper Blacks

The extremely high D-Max capacity of Epson UltraChromeK3® Ink produces richer, deeper blacks. The difference is particularly striking in glossy ultra high-quality photos. The Epson UltraChromeK3® Ink system with alternative use of photo or matte blacks guarantees satisfaction on a wide variety of media.

Density Ratio

Epson UltraChrome Ink

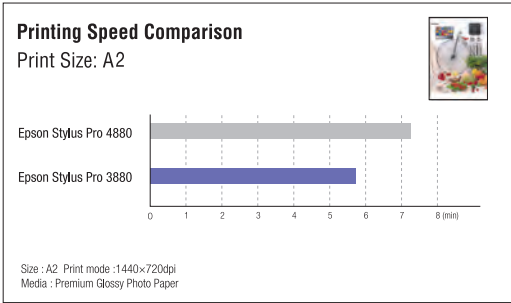


Epson UltraChrome K3 Ink



High-Speed Throughput

Advanced technologies give the Epson Stylus® Pro 3880 even higher data throughput speed than some of Epson's other eight colour models. High-quality, high-resolution colour prints are produced quickly and easily, maximising your productivity and output. Rapid, stress-free printing is at your fingertips.



Advanced Black-and-White Mode

Taking full advantage of the three shades of black ink, optimal control of tone, brightness, and contrast is possible with this advanced preset option, providing users with easy access to a greater range of artistic effects with excellent print quality. Subtle, easily performed, manual modifications give the desired print quality every time.



Excellent Colour Stability

Ideal for Contract Proofing

When Epson UltraChromeK3® Ink with Vivid Magenta comes into contact with the substrate, the ink quickly separates from the pigment particles which are absorbed deep into the media. As a result, colours become resistant to change and stabilise quickly. Superior short-term colour stability allows for high-precision contract proofing and speeding-up of operations.

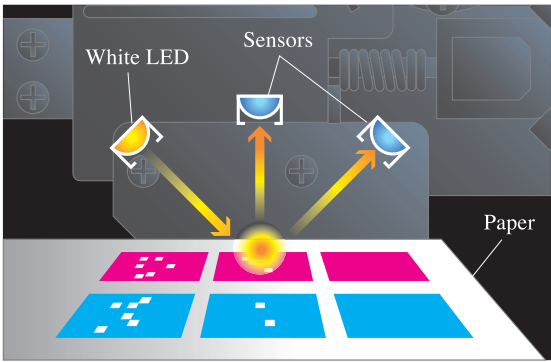
Automatic Black Ink Selection

Depending on the media type used, the printer automatically selects either the photo black ink set or matte black ink set for optimal results. There is no need to think about which ink to use for which media type.

Media Type	Auto-Switching Ink	Shared Inks
Glossy media	PK	LK LLK C LC VM VLM Y
Fine art, matte, or plain paper	MK	

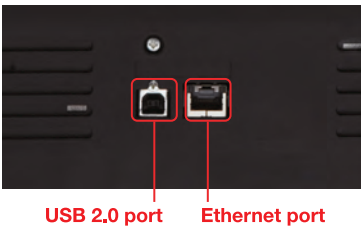
Intelligent Head Alignment and Maintenance Sensors

A built-in multisensor system ensures precise head alignment for accurate ink droplet delivery. The system uses a white LED and two sensors to scan printer utility calibration test patterns so that the print head is always properly aligned with the media. When the sensors detect nozzle-clogging anomalies in the test pattern, the cleaning function is automatically activated to maintain head nozzles in optimum condition.



Built-In Interfaces for Versatile Connectivity

A USB 2.0 port (compatible with 1.1) and an Ethernet port on the back of the Epson Stylus® Pro 3880 allow you to connect several computers to the printer simultaneously, for seamless printing from any computer system.



Epson Professional Media

The Epson Stylus® Pro 3880 and Epson UltraChromeK3® with Vivid Magenta Ink are designed for optimal performance when used with Epson’s full range of professional media. High-end professional photography and fine art are beautifully reproduced on various surfaces in sizes from 4 × 6 inches up to A2.



Black-and-White Photography



Photo gloss finish	Premium Glossy Photo Paper	***
Photo semigloss finish	Premium Semigloss Photo Paper	**
	Traditional Photo Paper	***
Artistic finish with texture	Velvet Fine Art Paper	***
Artistic texture finish	Water Color Paper – Radiant White	**
Matte finish surface	Enhanced Matte Paper	**

Colour Photography

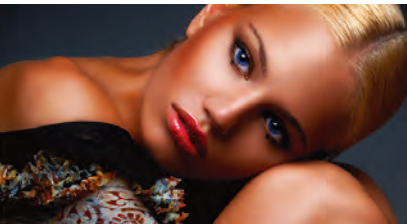


Photo gloss finish	Premium Glossy Photo Paper	***
Photo semigloss finish	Premium Semigloss Photo Paper	***
	Traditional Photo Paper	***
Matte finish surface	Enhanced Matte Paper	**

Fine Art Reproduction and Creative Photography



Artistic finish with texture	Velvet Fine Art Paper	***
Artistic finish with smooth surface	Water Color Paper – Radiant White	**

Pre-Press

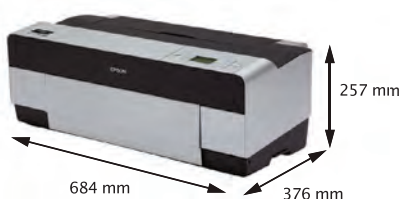


Photo semigloss finish	Premium Semigloss Photo Paper	**
------------------------	-------------------------------	----

Large Format
Inkjet Printers

Epson Stylus® Pro 3880

Epson Stylus® Pro 3880



SPECIFICATIONS

PRODUCT NAME	Epson Stylus® Pro 3880	
SIZE	17 inch wide (A2+)	
INK MODE	8 colour	
RESOLUTION	2880dpi x 1440dpi with Epson Variable Sized Droplet Technology	
INK SYSTEM	9 inks onboard (C, VM, Y, LC, VLM, LLK, Photo K, Matte K) Auto switching between Matte K and Photo K Individual high capacity ink cartridge Ink Capacity 80ml	
PRINTER SPEED	1440dpi x 720dpi : Approx. 1.17 minutes (Premium Glossy Photo Paper)	
4"X 6" COLOUR BORDERLESS	1440dpi x 720dpi : Approx. 2.02 minutes (Premium Glossy Photo Paper)	
A4 COLOUR	1440dpi x 720dpi : Approx. 3.35 minutes (Premium Glossy Photo Paper)	
A3 COLOUR	1440dpi x 720dpi : Approx. 5.80 minutes (Premium Glossy Photo Paper)	
A2 COLOUR	1440dpi x 720dpi : Approx. 5.80 minutes (Premium Glossy Photo Paper)	
PRINTER DRIVER	Windows® 2000 / XP / XP64, Mac® OS X 10.4.X Higher, Vista, Win7, OS X 10.6	
HEAD CONFIGURATION	180 nozzles x 8 with VSDT	
PAPER SUPPORT	CUT SHEET	
CUT SHEET	Paper Size: Borderless 4"x 6", 5"x 7", 8"x 7", 8"x 10", A4, 11"x 14", A3, A3+, A2 Thickness (ASF): 0.08mm to 0.27mm Thickness (manual feed front): 1.2mm to 1.5mm Thickness (manual feed rear): 0.29mm to 0.5mm	
PRINTING AREA (CUT SHEET)	Width: 89mm to 431.8mm Length: 127mm to 950mm	
TOTAL PRINT VOLUME	12,000 A2 sheets	
CONSUMABLE PARTS	Maintenance tank	
MAINTENANCE PARTS	Pump unit, flushing box, head cleaner, cap assembly	
MEMORY	64MB	
LANGUAGES	ESC / P2 Raster	
INTERFACES (STANDARD)	USB2.0 high speed (Compatible with 1.1) 10/100 Base-T/TX (Ethernet)	
VOLTAGE / CURRENT / FREQUENCY	220 - 240V version	
POWER CONSUMPTION	PRINTING 25W or less STANDBY 5W or less POWER OFF 0.4W or less	
DIMENSIONS	STORAGE 684mm(W) x 376mm(D) x 257mm(H) PRINTING 684mm(W) x 1042mm(D) x 550mm(H)	
WEIGHT	Approx. 19.8kg (excluding Ink and Media)	
	*LIGHTFASTNESS TEST CRITERIA (INDOOR DISPLAY CONDITION) Test Conditions 1. Under fluorescent light (Indoor Display Condition) with glass mount. 2. The data is calculated by Epson's accelerated test and it does not mean Epson guarantees periods. 3. The estimated longevity does not indicate the colour changing and the durability of the paper itself. Light Source Fluorescent Light Intensity 70,000 lux Temperature 24°C Humidity 60%RH Glass mount 2mm, soda lime Fade criteria Pure YMC 30% loss at OD = 1 Display-life calculation Total illuminance/(500lux x 10hours x 365days = 1year)	
WARRANTY	1 year onsite limited warranty (capital cities)	
EPSON PAPER	DESCRIPTION PRODUCT CODE	
Premium Glossy Photo Paper	4" x 6" (50 Sheets)	C13S041867
	5" x 7" (20 Sheets)	C13S041464
	A4 (20 Sheets)	C13S041285
	A3 (20 Sheets)	C13S041288
	A3+ (20 Sheets)	C13S041289
	A2 (25 Sheets)	C13S042091
Premium Semigloss Photo Paper	A4 (20 Sheets)	C13S041332
	A3 (20 Sheets)	C13S041334
	A3+ (20 Sheets)	C13S041328
	A2 (25 Sheets)	C13S042093
Premium Luster Photo Paper	A3+ (50 Sheets)	C13S041407
Archival Matte Paper	A4 (50 Sheets)	C13S041342
	A3 (50 Sheets)	C13S041344
	A3+ (50 Sheets)	C13S041340
Velvet Fine Art Paper	A3+ (20 Sheets)	C13S041637
Enhanced Matte Paper	A2 (25 Sheets)	C13S042096
	A2 (50 Sheets)	C13S042095
Traditional Photo Paper	A4 (25 Sheets)	C13S045050
	A3+ (25 Sheets)	C13S045051
	A2 (25 Sheets)	C13S045052
MAINTENANCE TANK	C13T582000	
INK CARTRIDGES	80ml UltraChromeK3® Ink with Vivid Magenta	
80ml UltraChromeK3® Ink with Vivid Magenta	Photo Black	C13T580100
	Cyan	C13T580200
	Vivid Magenta	C13T580A00
	Yellow	C13T580400
	Light Cyan	C13T580500
	Vivid Light Magenta	C13T580B00
	Light Black	C13T580700
	Light Light Black	C13T580900
	Matte Black	C13T580800

EPSON, EXCEED YOUR VISION, Epson Stylus, Epson UltraChrome, MicroPiezo and their logos are registered trademarks or trademarks of Seiko Epson Corporation. All other product names, brand names, and company names used herein are for identification purpose only and may be trademarks or registered trademarks of their respective owners.