



Large Format Inkjet Printers

Epson Stylus[®] Pro 7700 | Pro 9700

Exceptional Speed. Superior Quality.

Enhanced Productivity and Image Quality for a Range of Applications

Retail Industry

Indoor and short-term outdoor displays of various sizes are effective ways of presenting timely information and attracting customer attention.



Service Industry

Customised posters for hotels and restaurants.



AEC & GIS Industries

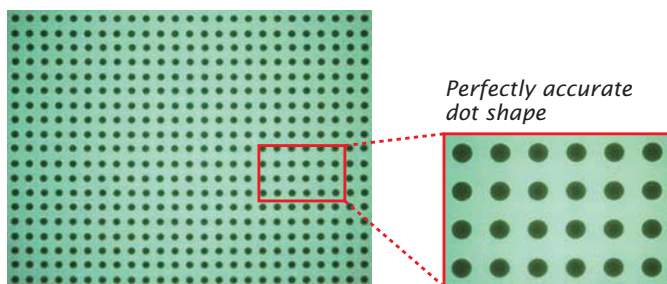
Large format printing is now available at higher speed and lower cost, so small firms or individual departments of large firms can produce their own drawings and maps.



Advanced Technology

MicroPiezo TFP® Print Head is Fast and Precise

This print head is Epson's most advanced ever, featuring higher performance and greater durability. The TFP (Thin Film Piezo) head has 720 micro-fine nozzles for each colour, delivering perfectly accurate dot shapes with virtually no misting or satellites. Optimised for Epson UltraChrome® Ink with Vivid Magenta, it uses Epson's proprietary Variable Sized Droplet Technology (VSDT) to produce droplets as small as 3.5 picoliters.

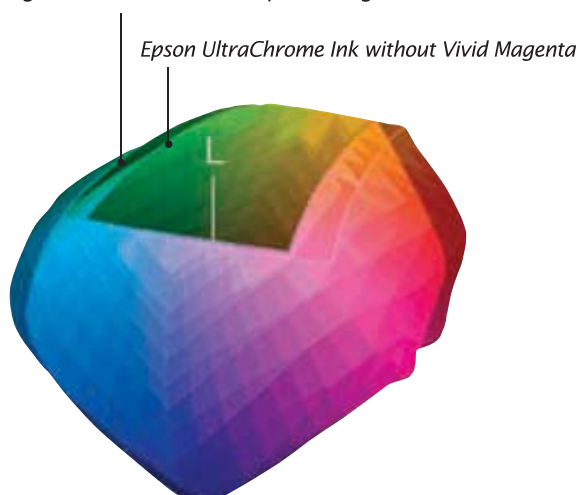


Colour Gamut and Stability

Wider Colour Gamut for More Brilliant Colours

The addition of Vivid Magenta to the Epson UltraChrome® Ink set further expands the already wide colour gamut. This allows a significantly improved range of expression, enabling the five inks to deliver outstanding printing performance. You'll be able to produce promotional flyers, posters and other materials that have greater colour vibrancy and impact.

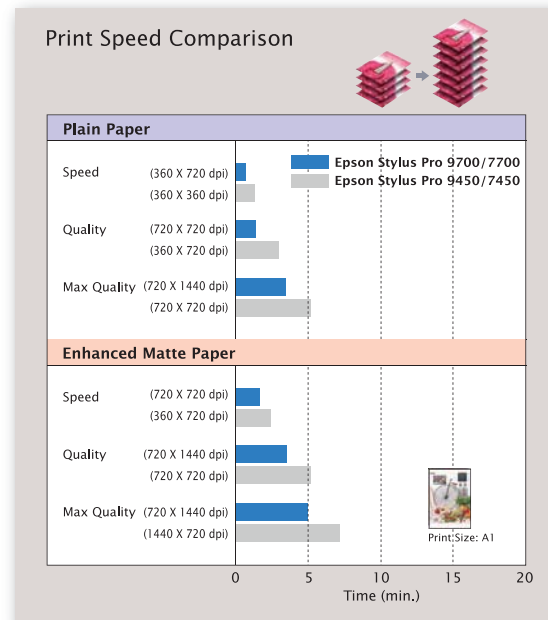
Expanded gamut with the addition of Vivid Magenta



Faster Turnaround Times

High Speed Throughput

Advanced compression and decompression technologies ensure high speed data throughput, for faster output without sacrificing quality.



Two Black Inks for Greater Versatility

One of the special features of the Epson Stylus® Pro 7700/9700 is that their ink set includes both Photo Black and Matte Black inks. The addition of Photo Black ensures high overall print quality with glossy photo paper. For optimal results as well as greater convenience, the printer automatically selects either the Photo Black or Matte Black ink set, depending on the media.



Excellent Colour Stability

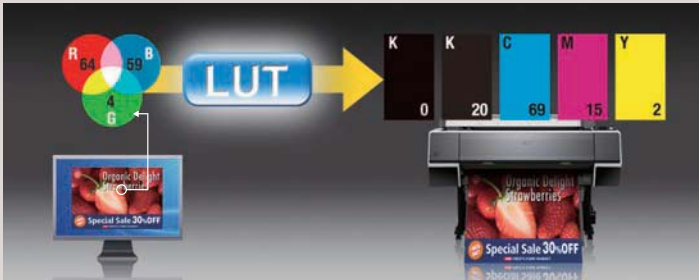
Epson UltraChrome® Ink with Vivid Magenta dries and stabilises quickly, ensuring consistently accurate colour rendition within minutes of printing.

High Lightfastness and Water Resistance

The excellent lightfastness characteristics of this ink prevent fading and discolouration for as long as you will be using the printed item. And thanks to the use of specially formulated water-insoluble, resin-encapsulated pigments, the ink is also extremely water-resistant.

Print Quality

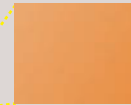
Epson LUT Technology Ensures Superior Colour Quality



Epson LUT (Look-Up Table) Technology provides colour information so the printer knows which inks to use and in what amounts. Using extremely powerful and sophisticated data processing, it not only enhances colour fidelity, it ensures smooth gradations between colours and reduces graininess.



Smooth gradations



Reduced graininess

Special Mode for Line Drawing

Both of these printers offer a special 1440 x 1440dpi mode* that prints line drawing and alphanumeric characters with significantly enhanced sharpness. It delivers greater sharpness and faster throughput than previous models.

* Compatible with certain media.

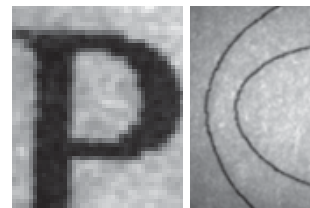
720 X 720 dpi mode

Times New Roman

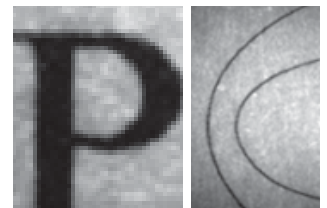
1440 X 1440 dpi mode

Times New Roman

720 X 720 dpi mode



1440 X 1440 dpi mode

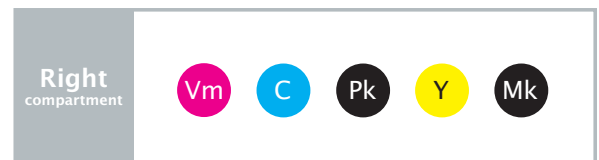


Examples above are printed on tracing paper.

High Productivity and Low Running Costs

Three Ink Cartridge Sizes Available

Three ink cartridge sizes are available: 150 ml, 350 ml and 700 ml. These cartridges help improve productivity by reducing the need for frequent cartridge changes at busy printing times. You can choose the size that best suits the purpose and frequency of your printing.



High Speed Rotary-Type Cutter

With a four-second, automatic rotary-type paper cutter that has been designed to support all paper (including adhesive), cloth and canvas media, the Epson Stylus® Pro 7700 and 9700 help to streamline the production and post-production processes by accurately and cleanly cutting roll media prints.



Paper Cut Button



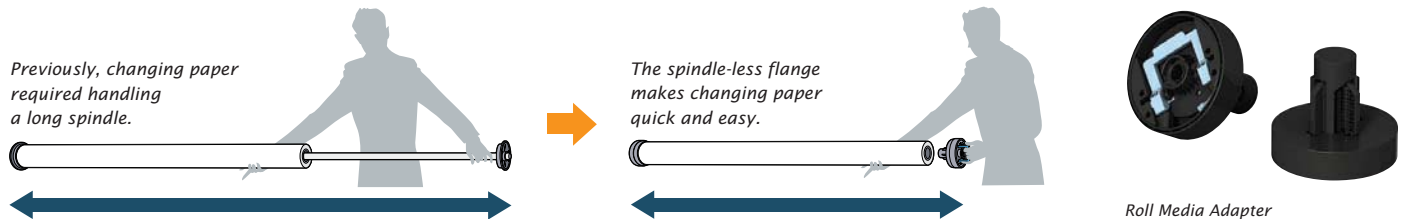
Cutter

Ease of Use

Innovative Roll Paper Handling

In affording truly versatile and flexible media management, the Epson Stylus® Pro 7700 and 9700 require no spindle. Instead, the printers utilise a media holding system that

simplifies roll media loading and automatically adjusts roll paper skew settings.



Colour LCD Control Panel

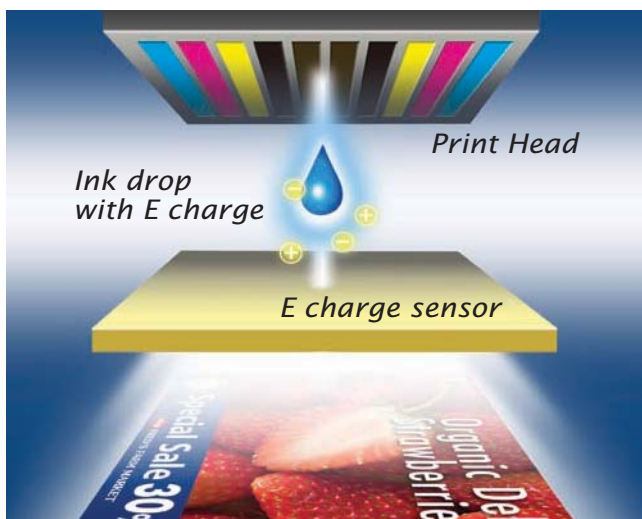
Providing operators with a greater level of ease-of-use, the Epson Stylus® Pro 7700 and 9700 incorporate an advanced control panel and colour LCD. Featuring one-touch buttons for job pause/cancellation, paper cut, Photo

Black/Matte Black ink change, paper feed release/close and ink cartridge holder cover control, the panel has been designed to assist operators improve productivity by simplifying printer operation and control.



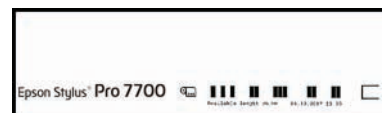
Automatic Ink Droplet Detection System

Using precision electrical charge detection technology, the Epson Stylus® Pro 7700 and 9700's Automatic Ink Droplet Detection System detects minute electrical charges on ink droplets fired by the MicroPiezo TFP print head. Activated each time the printer is turned on and after predetermined periods of time, the system automatically enters head-cleaning mode if an insufficient electrical charge is detected, which signifies ink jet clogging.



Media Barcode Tracking and Identification System barcode

An in-built Media Barcode Tracking and Identification System enables the Epson Stylus® Pro 7700 and 9700 to record – by means of barcode printing – media type and remaining length on roll media. Using the barcoded information, the printers automatically verify the media type and remaining length when partially used rolls of media are loaded. Along with helping to reduce media wastage, the barcode tracking system helps to eliminate costly production errors arising from incorrect media selection.



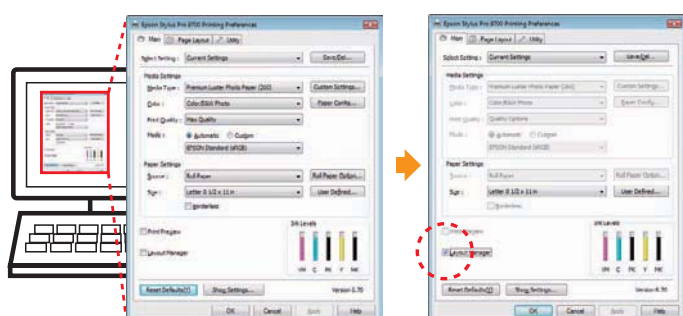
Ethernet and USB Interfaces Provide Versatile Connectivity

The Epson Stylus® Pro 7700/9700 are network ready, with a 100Base TX/10Base T Ethernet interface that allows out-of-the-box shared use in high workload environments. A USB 2.0 port (compatible with 1.1) is also provided. To ensure high speed data throughput, they use sophisticated compression and decompression processing.

Software Support

Upgraded, Easier to Use Printer Driver

The printer driver interface for the Epson Stylus® Pro 7700/9700 is intuitively easy to use. It provides a variety of print and media settings and menu display preferences that you can customise for the look you want and to reduce on-screen clutter. The Epson LFP Remote Panel 2 Utility Software provides four convenient functions: Firmware Updater, Printer Watcher, Paper Feed Adjuster and Customer Paper Setup.



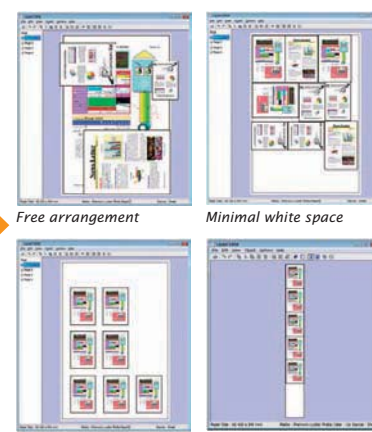
1 Open the driver. Set output size, etc. as usual.

2 Turn on the Layout Manager check box.

3 Click "Print" and the Layout Manager screen will be displayed.

New Layout Manager (Windows driver only)

Epson's Layout Manager enables the efficient printing of items created in various applications and in various sizes. There are a number of layout options, including minimising white space to reduce paper wastage, multiply by nesting, fit to roll and free arrangement.



4 Compatible with various layouts. Then just click "Print" in the upper left.

HDI Driver

All Epson Stylus® Pro printers come with the driver optimised to support the Heidi Device Interface (HDI) graphics engine used by AutoCAD. The drivers help speed throughput and ensure high precision print data accuracy.

Linux Driver

The Epson Stylus® Pro 7700 and 9700 have x86 32bit Linux drivers available for download at www.epson.com.au/prographics.



Epson Professional Media

The Epson Stylus® Pro 7700 and 9700 and Epson UltraChromeK3® with Vivid Magenta Ink are designed for optimal performance when used with Epson's full range of professional media. Choose from an array of media finishes and weights to produce high quality displays, posters, maps and line drawings.

Indoor and short-term outdoor displays



Matte finish surface	Enhanced Synthetic Paper
Matte finish surface	Enhanced Adhesive Synthetic Paper
Photo gloss finish	Premium Glossy Photo Paper (250)
Matte finish surface	Doubleweight Matte Paper

Posters for hotels and restaurants



Photo gloss finish	Premium Glossy Photo Paper (250)
Photo semigloss finish	Premium Semigloss Photo Paper
Matte finish surface	Premium Semimatte Photo Paper (250)

Maps



Matte finish surface	Singleweight Matte Paper
Matte finish surface	Doubleweight Matte Paper
Matte finish surface	Enhanced Synthetic Paper
Matte finish surface	Enhanced Adhesive Synthetic Paper
Photo gloss finish	Premium Glossy Photo Paper

Architectural and Line Drawings



Matte finish surface	Singleweight Matte Paper
Matte finish surface	Doubleweight Matte Paper
Photo gloss finish	Premium Glossy Photo Paper (250)
Matte finish surface	Premium Semimatte Photo Paper (250)

Epson Stylus Pro 7700

Options

C12C815331	Spare Blade
C12C890501	Maintenance Tank
C12C811241	Roll Media Adapter (pair)

Warranty

1YWPRO7700	1 Year Extended Warranty
2YWPRO7700	2 Year Extended Warranty

Ink Cartridges

C13T642100	Photo Black
C13T642200	Cyan
C13T642300	Magenta
C13T642400	Yellow
C13T642800	Matte Black

Ink Cartridges

C13T596100	Photo Black
C13T596200	Cyan
C13T596300	Vivid Magenta
C13T596400	Yellow
C13T596800	Matte Black

Ink Cartridges

C13T636100	Photo Black
C13T636200	Cyan
C13T636300	Vivid Magenta
C13T636400	Yellow
C13T636800	Matte Black

Epson Stylus Pro 9700

Options

C12C815331	Spare Blade
C12C890501	Maintenance Tank
C12C811241	Roll Media Adapter (pair)
C12C815321	Auto Take Up Reel Unit

Warranty

1YWPRO9700	1 Year Extended Warranty
2YWPRO9700	2 Year Extended Warranty

Ink Cartridges

C13T642100	Photo Black
C13T642200	Cyan
C13T642300	Magenta
C13T642400	Yellow
C13T642800	Matte Black

Ink Cartridges

C13T596100	Photo Black
C13T596200	Cyan
C13T596300	Vivid Magenta
C13T596400	Yellow
C13T596800	Matte Black

Ink Cartridges

C13T636100	Photo Black
C13T636200	Cyan
C13T636300	Vivid Magenta
C13T636400	Yellow
C13T636800	Matte Black

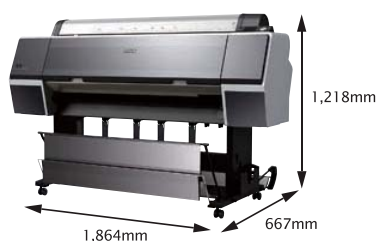
Large Format Inkjet Printers

Epson Stylus® Pro 7700 Pro 9700

Epson Stylus® Pro 7700



Epson Stylus® Pro 9700



SPECIFICATIONS

PRODUCT NAME	Epson Stylus® Pro 7700
SIZE	24 inch wide
INK MODE	4 Colour (5 inks onboard) 10 channel Auto switching between Photo and Matte Black
PRINT TECHNOLOGY	
Print Head Nozzle Configuration Print Direction	MicroPiezo™ TFP (Thin Film Piezo) Print Head 720 nozzles per colour Bi-directional printing, uni-directional printing
PRINT RESOLUTION	
Maximum resolution Maximum Ink Droplet Size	720dpi x 1440dpi (1440dpi x 1440dpi Line drawing mode) 3.5pl
INK SYSTEM	
Ink type	Epson UltraChromeK3® Ink with Vivid Magenta Ink
Configuration	4-Colour pigment ink (C, M, Y, PK, MK, LC) with 5 slots Auto switching between Photo and Matte Black
Ink Cartridge Ink Capacity	Individual high capacity hot swappable ink cartridges 150ml, 350ml or 700ml
PRINTER SPEED – A1 SIZE	
Speed (360 x 360dpi) Quality (720 x 720dpi) Max Quality (720 x 1440dpi)	0.72 minutes 1.33 minutes 3.5 minutes
PRINTER DRIVER	Windows® 7/XP (32bit/64bit)/2000/Vista Mac® OS X 10.3.9 or later Linux*
UTILITY SOFTWARE	Printer Driver (Win, Mac) Epson LFP Remote Panel 2 EpsonNet Easy Install EpsonNet Print (Win Only) EpsonNet Config HDI Driver Epson CopyFactory
PAPER INPUT CAPABILITY	
Roll Media	Single roll 1 roll < 170mm / Outside diameter Media width 254mm-620mm Maximum Media Thickness 0.8mm-1.5mm
PAPER OUTPUT CAPABILITY	Output bin, Rotary cutter blade, single roll system
PRINTING AREA (WIDTH)	
Maximum paper width	Roll Paper 254mm-610mm, 2 / 3 inch core Cut Sheet 210mm-610mm
CONSUMABLES PARTS	Cutter blade, maintenance tank
MAINTENANCE PARTS	Pump unit, flushing box, head cleaner, cap assembly
RELIABILITY	
Cutter Blade Carriage Motor	Coat paper, approx. 2000 cuts Approx. 20,000 B0+ sheets
CONTROL PANEL	
Colour Size	2.5 inch LCD screen 320 x 200 pixels
ROLL DIMENSIONS	Core diameter 2" or 3", Max. Outside Diameter Ø 150mm
MEMORY	
Printer Network	256MB 64MB
LANGUAGES	ESC / P2 Raster
INTERFACES (STANDARD)	USB2.0 (Compatible with 1.1) Ethernet 10 Base-T 100 Base-TX
VOLTAGE / CURRENT	AC 100-120V / 220-240V
POWER CONSUMPTION	
Operating Sleep Standby	80W 14W <1W
DIMENSIONS	1356 x 667 x 1218 (mm)
WEIGHT	Printer: Approx 100kg (includes stand)
WARRANTY	Standard 1 year onsite

PRODUCT NAME	Epson Stylus® Pro 9700
SIZE	44 inch wide
INK MODE	4 Colour (5 inks onboard) 10 channel Auto switching between Photo and Matte Black
PRINT TECHNOLOGY	
Print Head Nozzle Configuration Print Direction	MicroPiezo TFP (Thin Film Piezo) Print Head 720 nozzles per colour Bi-directional printing, uni-directional printing
PRINT RESOLUTION	
Maximum resolution Maximum Ink Droplet Size	720dpi x 1440dpi (1440dpi x 1440dpi Line drawing mode) 3.5pl
INK SYSTEM	
Ink type	Epson UltraChromeK3® Ink with Vivid Magenta Ink
Configuration	4-Colour pigment ink (C, M, Y, PK, MK, LC) with 5 slots Auto switching between Photo and Matte Black
Ink Cartridge Ink Capacity	Individual high capacity hot swappable ink cartridges 150ml, 350ml or 700ml
PRINTER SPEED – A1 SIZE	
Speed (360 x 360dpi) Quality (720 x 720dpi) Max Quality (720 x 1440dpi)	0.72 minutes 1.33 minutes 3.5 minutes
PRINTER DRIVER	Windows® 7/XP (32bit/64bit)/2000/Vista Mac® OS X 10.3.9 or later Linux*
UTILITY SOFTWARE	Printer Driver (Win, Mac) Epson LFP Remote Panel 2 EpsonNet Easy Install EpsonNet Print (Win Only) EpsonNet Config HDI Driver Epson CopyFactory
PAPER INPUT CAPABILITY	
Roll Media	Single roll 1 roll < 170mm / Outside diameter Media width 1118mm Maximum Media Thickness 0.8mm-1.5mm
PAPER OUTPUT CAPABILITY	Output bin, Rotary cutter blade, single roll system
PRINTING AREA (WIDTH)	
Maximum paper width	Roll Paper 254mm-1118mm, 2 / 3 inch core Cut Sheet 210mm-1118mm
CONSUMABLES PARTS	Cutter blade, maintenance tank
MAINTENANCE PARTS	Pump unit, flushing box, head cleaner, cap assembly
RELIABILITY	
Cutter Blade Carriage Motor	Coat paper, approx. 2000 cuts Approx. 20,000 B0+ sheets
CONTROL PANEL	
Colour Size	2.5 inch LCD screen 320 x 200 pixels
ROLL DIMENSIONS	Core diameter 2" or 3", Max. Outside Diameter Ø 150mm
MEMORY	
Printer Network	256MB 64MB
LANGUAGES	ESC / P2 Raster
INTERFACES (STANDARD)	USB2.0 (Compatible with 1.1) Ethernet 10 Base-T 100 Base-TX
VOLTAGE / CURRENT	AC 100-120V / 220-240V
POWER CONSUMPTION	
Operating Sleep Standby	85W 14W <1W
DIMENSIONS	1864 x 667 x 1218 (mm)
WEIGHT	Printer: Approx 134kg (includes stand)
WARRANTY	Standard 1 year onsite

EPSON, EXCEED YOUR VISION, Epson Stylus, Epson UltraChrome, MicroPiezo TFP and their logos are registered trademarks or trademarks of Seiko Epson Corporation. All other product names, brand names, and company names used herein are for identification purpose only and may be trademarks or registered trademarks of their respective owners.

*Non-standard driver. To download please go to www.epson.com.au/prographics

Better Products for a Better Future