



Large Format Inkjet Printer
Epson Stylus[®] Pro WT7900

Package Proofing Just Got Serious!

- World's first aqueous inkjet proofer with white ink
- Fast and accurate for increased productivity
- Simplified in-house package proofing

Crystal clear colour proofs

Produce film-based package proofs in-house with the new Epson Stylus® Pro WT7900 — the world's first water-based inkjet package proofer with white ink. This highly accurate package proofer is ideal for professionals who want a cost-effective alternative to conventional proofing systems with white ink that can be both expensive and time-consuming. Boasting supreme ease-of-use and low maintenance, the Epson Stylus Pro WT7900 streamlines proofing workflow by allowing you to print directly to film without the need for costly devices or specialised skills.



Epson UltraChrome® HDR Ink with White

Another first for Epson — new Epson Ultrachrome HDR Ink with White. A complete set of inks that empower you to obtain high-quality film proofs with all the ease and quality for which Epson inkjet printers are renowned.

Multi-media proofing capability

The Epson Stylus® Pro WT7900 with white ink is all you need for creating precision proofs on a wide variety of media to simulate different packaging.



Transparent soft-package proofs



Clear package box proofs



Continuous-tone soft-package proofs

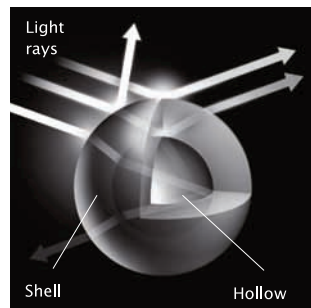


Luxury goods

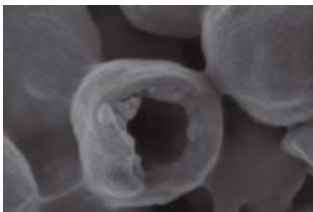
Epson UltraChrome® HDR Ink with White

High-density white ink

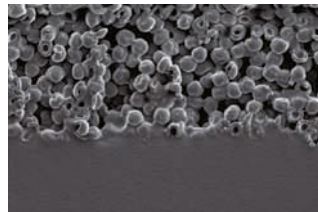
Specially developed for the Epson Stylus® Pro WT7900, the water-based white ink is perfect for proofs of soft, clear packaging. This innovative ink exhibits excellent white density and, unlike solvent and UV ink, can be used in office environments. It is odourless and is handled as easily as conventional aqueous inkjet package proofer inks.



Cross section of ink particle

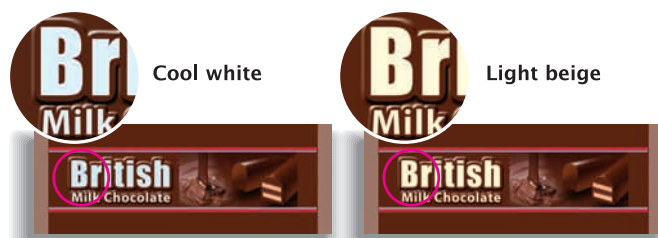


Cross section of ink particle on media surface



Tinted whites

In conjunction with RIP software the precise colour control capability of the Epson Stylus® Pro WT7900 allows you to add subtle tints to white in order to simulate white ink used in the actual printing process.



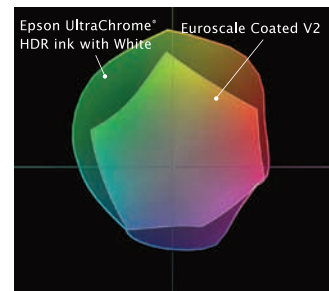
Smooth white gradations

White ink makes it possible to produce beautiful white gradations on soft-packaging film — indispensable when making proofs for transparent packages.



Wide colour gamut

By including green and orange inks in the Epson UltraChrome® HDR Ink set, colour gamut has been significantly expanded. This translates into richer, more accurate spot colour simulation and smoother tonal gradations.



Eye-catching spot colours

Custom spot colours never looked so good thanks to the wide colour gamut provided by Epson UltraChrome® HDR Ink with White and Epson ClearProof™ Film. The addition of orange, green and high-density white ink delivers outstanding spot colour coverage to meet virtually any package proofing requirement.



Low maintenance white ink

Unlike standard white ink, which needs frequent agitation, Epson's white ink is very easy to maintain. The pigment in the ink solution remains suspended longer, needing a shake only once a week. For added convenience, a message on the LCD panel alerts you when agitation is required.



Genuine Epson ClearProof™ Film

The perfect match for Epson UltraChrome® HDR Ink with White, Epson's ClearProof Film is the media of choice for high-quality proofing applications. This new film exhibits increased ink adherence capability, resulting in excellent print quality even when printing vivid or deep colours that require high ink duty.

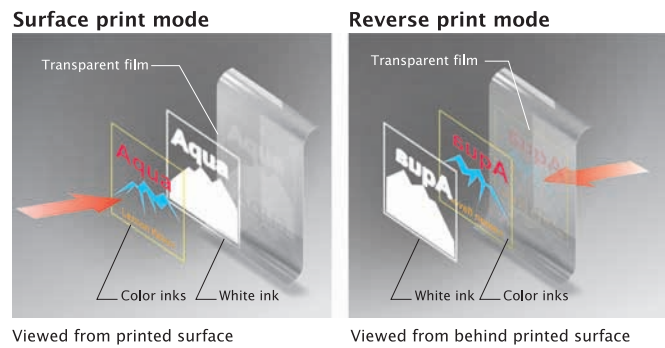


* Print quality comparisons performed under identical conditions.

Note: Functionality varies depending on RIP software.

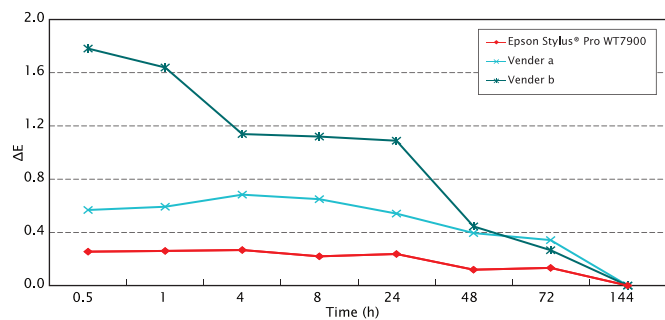
Surface and reverse print modes

Two print modes fulfill a wide variety of proofing requirements. Surface print mode, which lays down white ink first then overprints other colours, is ideal for printing on either transparent or opaque media. Reverse print mode does the opposite, producing rich, vivid proofs on transparent media that can be viewed from the non-printed side.



Faster drying time, excellent colour stability

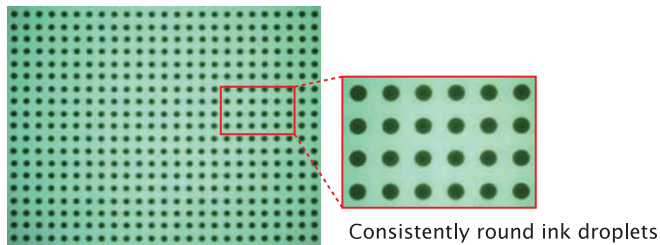
A unique ink-absorbing layer incorporated in Epson ClearProof™ Film rapidly absorbs ink, allowing proofs printed with Epson UltraChrome® HDR Ink with White to become colour-stable almost instantly. This also results in faster drying times.



Accurate, reliable, and easy to use.

Advanced MicroPiezo TFP® Print Head

The Epson Stylus® Pro WT7900 is equipped with a MicroPiezo TFP Print Head. Capable of delivering well-defined dots with virtually no misting or satellites, this cutting-edge print head is optimised for Epson UltraChrome® HDR Ink with White and Epson's own Variable-Sized Droplet Technology to produce drops as small as 3.5 picolitres. Additionally, the head is designed to markedly decrease print time while optimising image quality.



SpectroProofer®

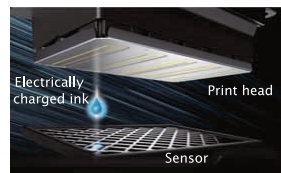
Simplify colour management with the optional SpectroProofer. This high-performance in-line spectrophotometer automates processes such as printing and measuring colour patches for linearisation, ICC profile creation and proof certification.



SpectroProofer
Powered by **x-rite**

Auto Nozzle Check System

To assure proper printing, a built-in sensor quickly verifies print nozzle status and automatically cleans the print head when required. Even partially clogged nozzles will be located with this intelligent system.



* Illustration is for instructional purposes only and does not represent the actual nozzles of the Epson Stylus Pro WT7900.

Precise overlays

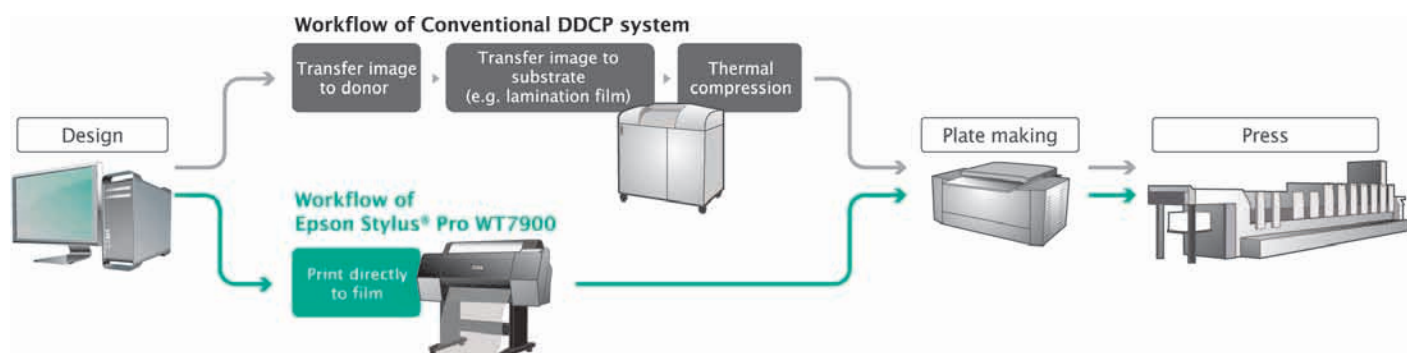
Epson's MicroPiezo TFP® Print Head delivers superb accuracy, resulting in precise white trapping with colour.



A simple way to better proofs

The Epson Stylus® Pro WT7900 is designed to fit current proof-to-print workflows of major RIP and workflow systems providers. In addition, since it works like a

standard inkjet package proofer, no special skills are required to obtain beautiful proofs, unlike conventional DDCP systems.



Industry Support

For seamless integration into existing packaging workflows and a wider choice of proofing solutions, the Pro WT7900 is supported by leading software companies and backed by Epson authorised dealers and a national service network. This wide industry support for the WT7900 promotes a:

1. Shorter learning curve
2. Greater choice of total solutions



Film Stacker (standard)

The Film Stacker on the Pro WT7900 carefully collects and stacks proofs to prevent damage to the printed surface.



Epson Professional Media

The Epson Stylus® Pro WT7900 and Epson UltraChrome® HDR Ink with White are designed for optimal performance when used with Epson's full range of professional media.



Transparent Soft Package Proofs



Epson ClearProof™ Film

Continuous Tone Soft Package Proofs



Premium Glossy Photo Paper

Proofing Paper White Semimatte

Clear Package Box



Epson Clear Proof Film

High End Package Proofs



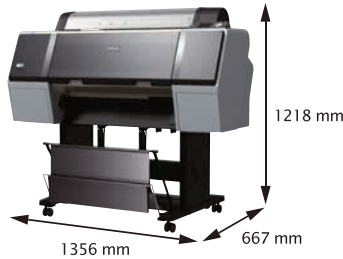
Epson Clear Proof Film

Premium Glossy Photo Paper

Proofing Paper White Semimatte

Epson Stylus® Pro WT7900

Epson Stylus® Pro WT7900



SPECIFICATIONS

24-inch Model	Epson Stylus® Pro WT7900
Printing Technology Printing Method	MicroPiezo TFP® Print Head 10-channel with Epson Variable-Sized Droplet Technology
Nozzle Configuration Print Direction Others	360 nozzles for each colour (x10) Bi-directional; Uni-directional Auto Head Alignment Technology Auto Nozzle Check System
Print Quality Maximum Resolution Minimum Ink Droplet Volume	1440 x 1440 dpi 3.5 pl
Ink System Ink	Epson UltraChrome® HDR ink with White technology (Photo Black, Cyan, Vivid Magenta, Yellow, Light Cyan, Vivid Light Magenta, Orange, Green, White, Cleaning)
Ink Capacity Colour Ink White Ink	700 ml/350 ml 350 ml/150 ml
Paper Handling Paper Feed Method Roll Dimensions Printing Area (width) Thickness	Friction feed 254 mm - 610 mm, 2-inch core/3-inch core 2-inch core: Max φ103 mm/3-inch core: Max φ 150 mm Roll paper: 406 mm - 610 mm Cut sheet: 210 mm - 610 mm 0.08 mm - 1.50 mm
Control Panel Colour Size	2.5-inch colour LCD 320 x 200 pixels
Interface	USB 2.0 Ethernet 10Base-T/100Base-TX
Control Code	ESP/P raster ESC/P2
Memory	Printer: 256 MB Network: 64 MB
Environment Temperature Humidity	Operating: 5°C - 35°C Storage: -20°C - 40°C Operating: 20% - 80% (no condensation) Storage: 5% - 85% (no condensation)
Dimensions/Weight* Dimensions (W x D x H) Weight	Without Media Basket: 1,356 x 667 x 1,218 mm With Media Basket: 1,356 x 1,442 x 1,218 mm Without Media Basket: Approx. 101 kg With Media Basket: Approx. 103 kg * Including printer stand
Electrical Specifications Voltage Power Consumption	AC 100-240V 50/60Hz Operating: 60 W Sleep mode: Less than 14 W Plug-in Off (Standby): Less than 1 W
Noise Level	Approx. 50 dB(A)
Utility Software*	Communications Driver Epson LFP Remote Panel 2 EpsonNet Setup EpsonNet Config Epson Online Registration EpsonNet Print Epson Network Utility * Windows® 2000/XP (32/64bit), Windows® Vista (32/64bit)/Windows® 7
Options C12C890531 C12C815331 C12C811241 C12C890191	SpectroProofer® Mounter 24" Auto Cutter Spare Blade Roll Media Adapter Maintenance Tank

Epson Media

PRODUCT CODE
C13S042371
C13S042372
C13S042003
C13S042004
C13S041742
C13S041638
TBD
TBD

GENUINE Epson PAPERS

Epson Clear Proof Film 17" x 30m
Epson Clear Proof Film 24" x 30m
Epson Proofing Paper White Semimatte 17" x 30.5m
Epson Proofing Paper White Semimatte 24" x 30.5m
Epson Premium Glossy Photo Paper (250) 16" x 30.5m
Epson Premium Glossy Photo Paper (250) 24" x 30.5m
Epson MetallicProof Film 17"
Epson MetallicProof Film 24"

Epson Australia Pty Ltd
3 Talavera Road
North Ryde NSW 2113
Tel: 02 8899 3666
LFP Customer Service: 1300 131 928
www.epson.com.au
ABN: 91 002 625 783

EPSON, EXCEED YOUR VISION, Epson Stylus, Epson UltraChrome, MicroPiezo TFP, SpectroProofer, Epson ClearProof and their logos are registered trademarks or trademarks of Seiko Epson Corporation. All other product names, brand names, and company names used herein are for identification purpose only and may be trademarks or registered trademarks of their respective owners.

Better Products for a Better Future

For more information on Epson's environmental programs, go to www.epson.com.au