

## Technical Tip for Setting up the L355 CISS Printer with a Mac

Follow these instructions for the setup of the L355 printer with Mac OS X. If you do not have a CD drive [CLICK HERE FOR DOWNLOAD INSTRUCTIONS](#).

### Instructions:

1. Fill the ink tanks on the printer, carefully following the Start Here guide that accompanies the printer.

2. Once the ink bottles are filled, turn the printer on. The ink light should be on. Hold the right side button until ink charging begins. At this point the ink light and power light will alternate for the period of charging. When finished the ink light will be off.

**INK CHARGING CAN TAKE UP TO 20 MINUTES**

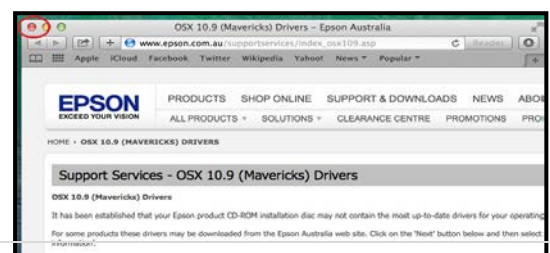
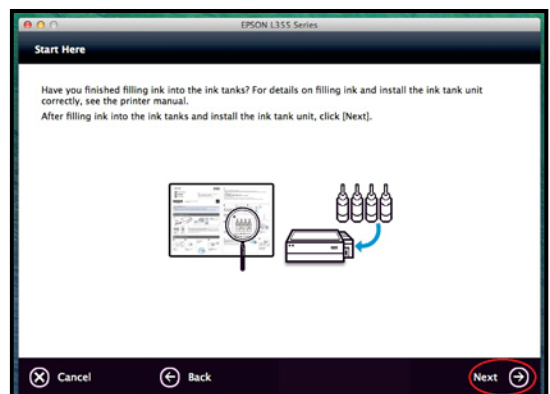
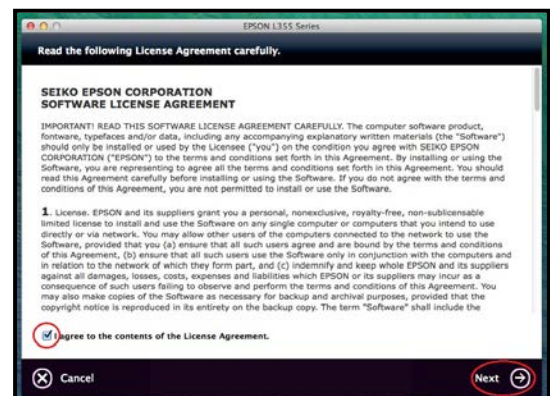
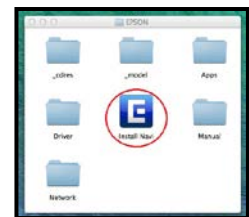
3. Insert the driver CD in to your computer. Run **Install Navi** from the CD. [CLICK HERE IF YOU GET A DEVELOPER WARNING MESSAGE](#).

4. Enter your administrator **Name** and **Password** and click **OK**.

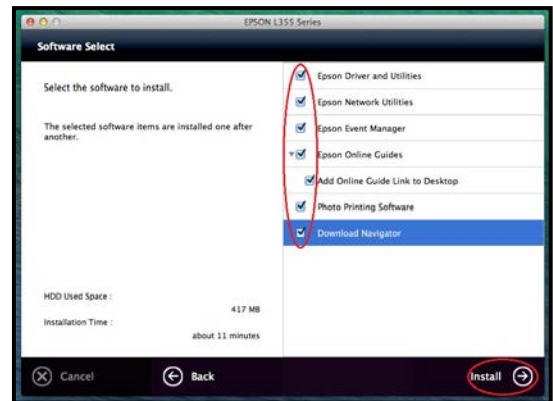
5. Check the box to accept terms and click **Next**.

6. Confirm ink filling has been performed and click **Next**.

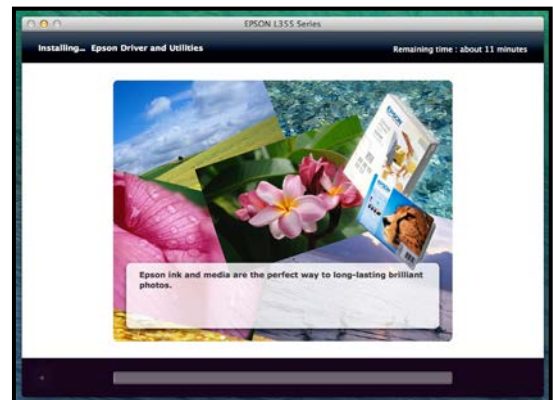
7. If a website is loaded about drivers for Mavericks, click the **red button** in the upper left corner to close it.



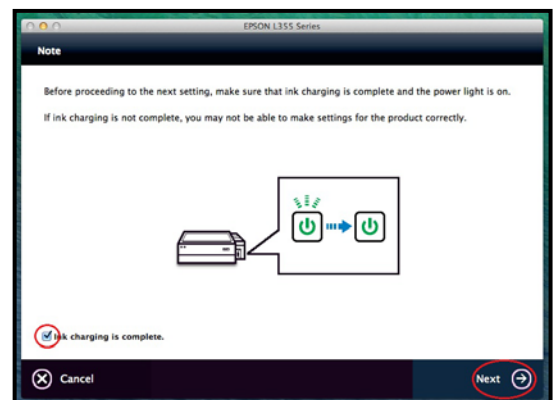
8. Select the software and other items to install. **Click Install.**



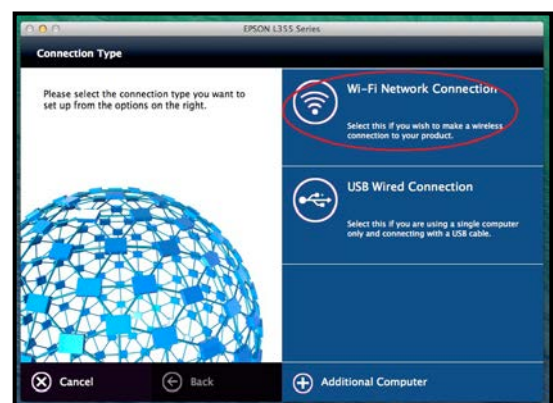
9. Wait for the installation to complete.



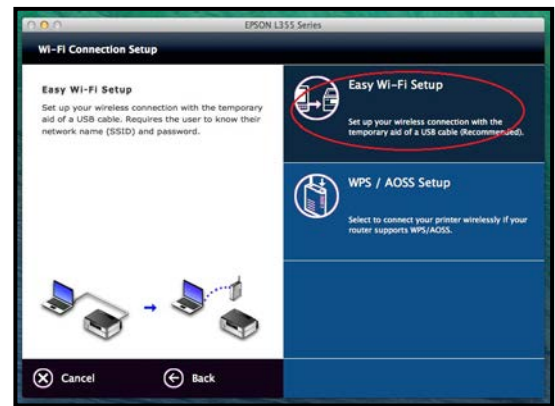
10. Confirm that ink charging has completed. The ink light will be off and the power light solid.



11. Click the connection method. For this guide it will be **Wi-Fi Network Connection**.



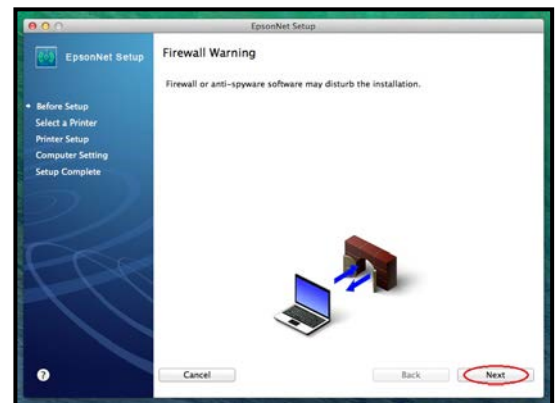
12. Select **Easy Wi-Fi Setup** to use the included USB cable to apply the settings to the printer. If your wireless router supports **WPS**, click that button.



13. Turn the printer on and connect the USB cable between the printer and the computer. Click **Next**.



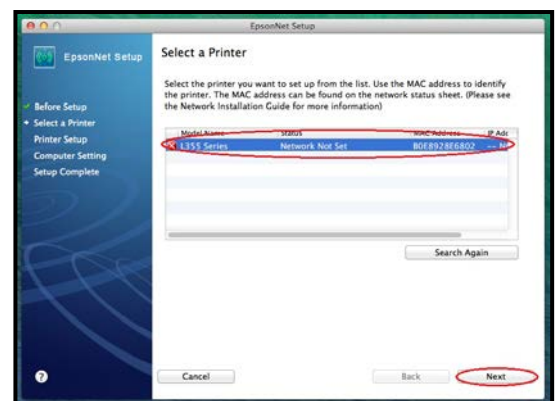
14. When the Firewall Warning shows, click **Next**.



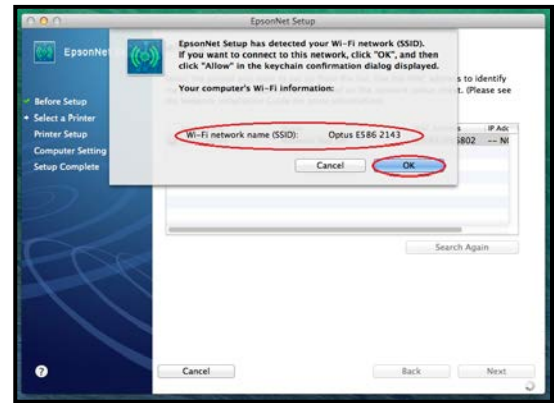
15. Click **Allow** to let EpsonNet Setup to accept incoming connections.



16. Select your printer in the list and click **Next**.



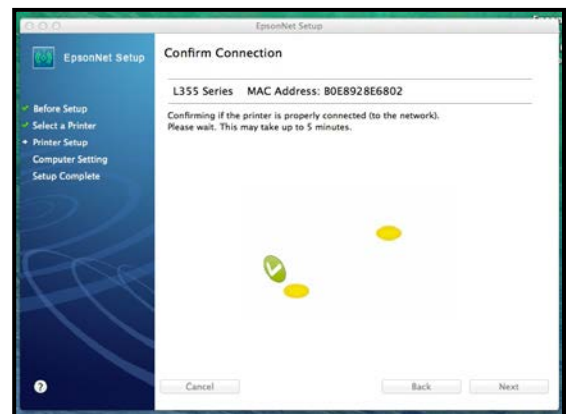
17. Confirm the correct wireless network name is displayed and click **OK**.



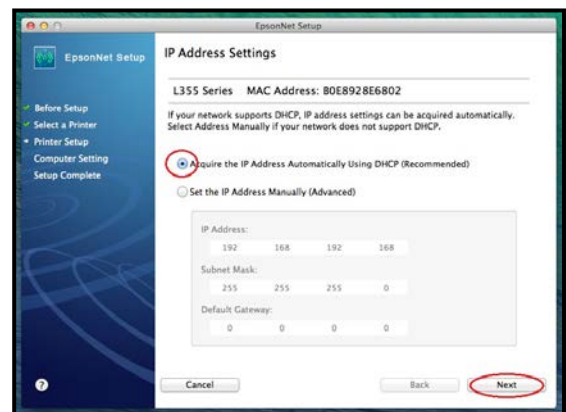
18. Enter your administrator **Name** and **Password** and click **Allow**.



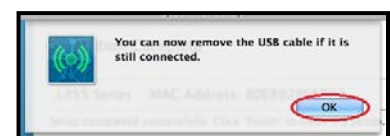
19. Wait as the network settings are transferred to the printer.



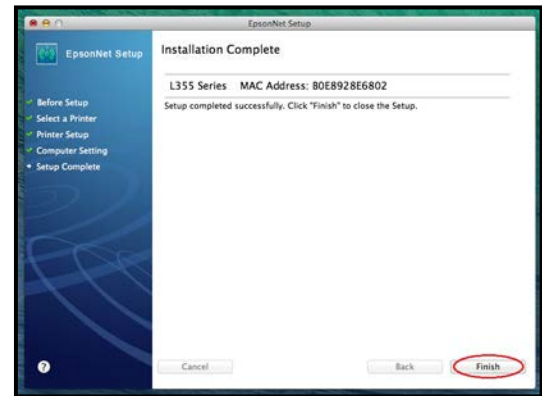
20. Confirm the network setup you prefer. Generally this should be left on the **DHCP** setting. Click **Next**.



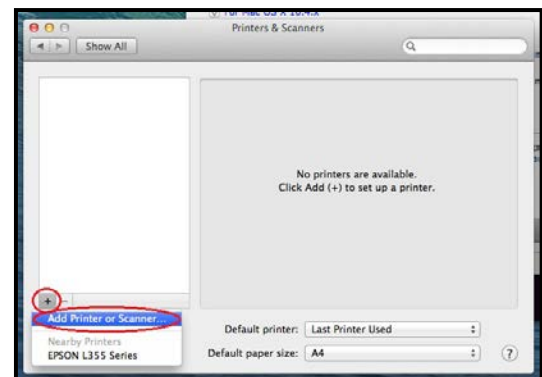
21. Disconnect the USB cable and click **OK**.



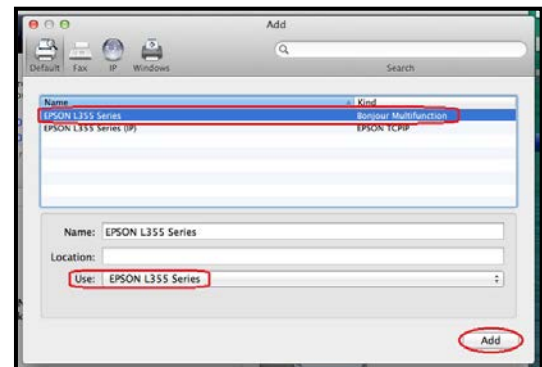
22. The printer Wi-Fi settings have now been loaded. Click **Finish**.



23. System Preferences will open automatically. Click the **+** button and select **Add Printer or Scanner**. Do not select the printer in the sub-menu.



24. Select the printer with Bonjour Multifunction to the right. Ensure Use has **EPSON L355 Series**. If it says Airprint, change it. Click **Add**.



You are now ready to print and scan with your new Epson printer!

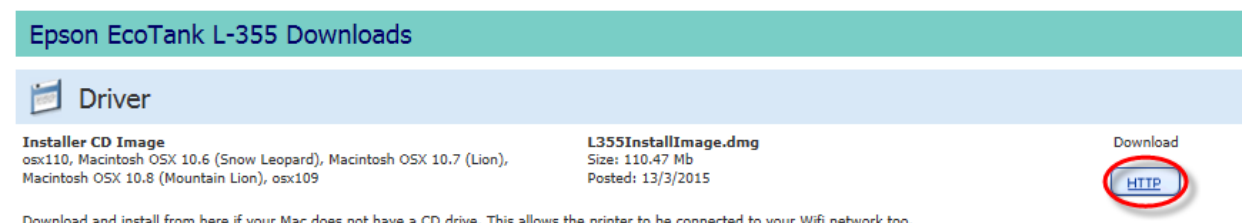
Continue through the installer procedure to register your printer and install additional items.

## Downloading the L355 Setup Files

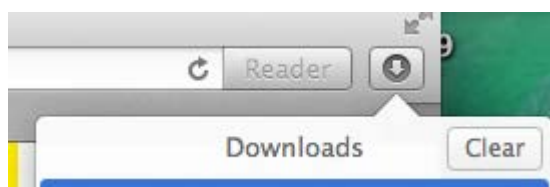
1. Access the download from the following link:

<http://tech.epson.co.nz/downloads/directdownload.asp?ProductID=L355&FileID=7883>

2. Click **HTTP** to begin the download.



3. Double-click the **L355InstallImage.dmg** in your downloads menu or locate the file and open it.



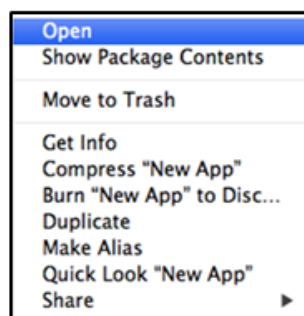
[Click here to return to the product setup.](#)

## Gatekeeper Developer Warning

If you get a warning message related to an unidentified developer you may need to allow the **Install Navi** to be installed by ignoring Gatekeeper.

### [BACK TO TOP](#)

1. Control or right click the icon of the application and choose **Open**.



2. In the warning dialogue click **Open**.

