

Technical Tip for Setting up the L355 CISS Printer with Windows

Follow these instructions for the setup of the L355 printer with Windows 7 or 8. If your computer does not have a CD drive [access the Web Installer by CLICKING HERE](#).

Instructions:

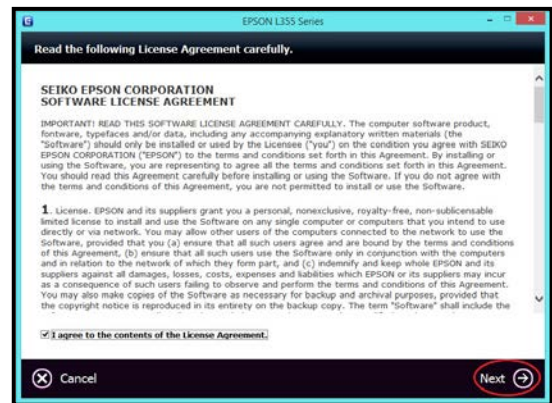
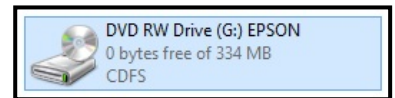
1. Fill the ink tanks on the printer, carefully following the Start Here guide that accompanies the printer.

2. Once the ink bottles are filled, turn the printer on. The ink light should be on. Hold the right side button until ink charging begins. At this point the ink light and power light will alternate for the period of charging. When finished the ink light will be off.

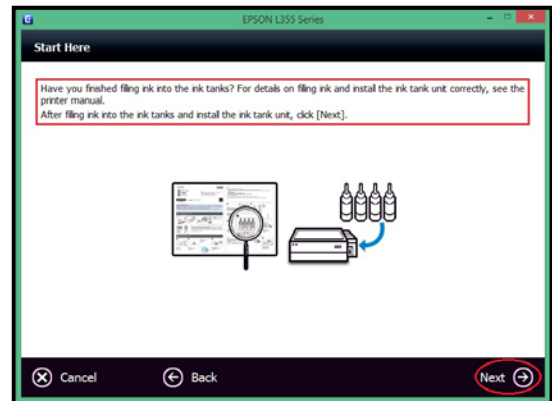
INK CHARGING CAN TAKE UP TO 20 MINUTES

3. Insert the driver CD in to your computer. Either the installer will run automatically or you can run it from the CD manually.

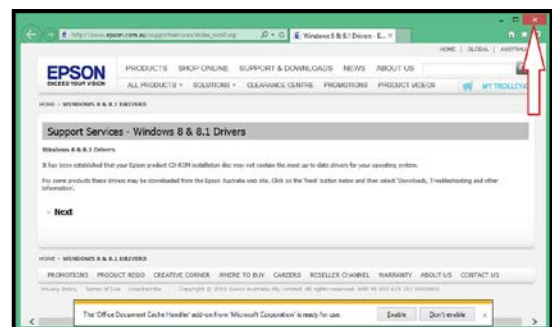
4. Click **Next**.



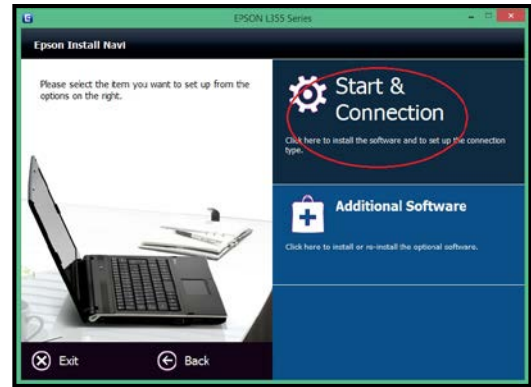
5. Confirm the ink filling message and click **Next**.



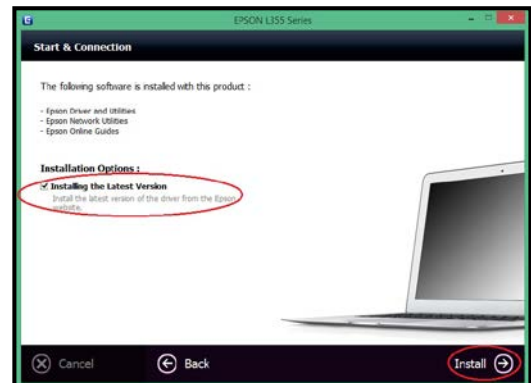
6. If a web page opens regarding Windows 8 and 8.1 close it by clicking the **red X** button.



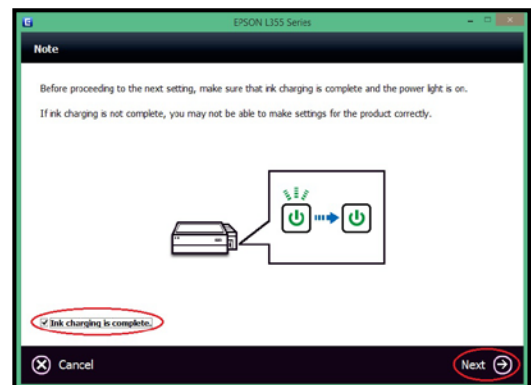
7. Click **Start & Connection**.



8. Click **Install**. If you have any difficulty installing, try unchecking **Installing the Latest Version**.

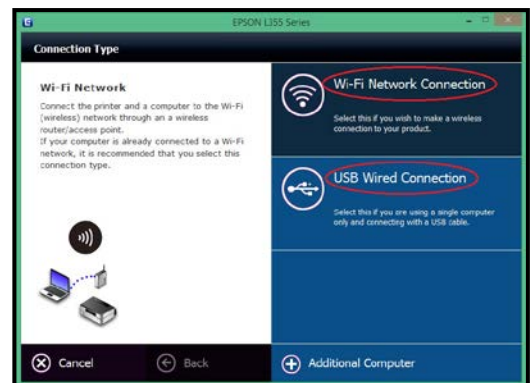


9. Once the driver is installed an ink charging check will appear. Check the box **Ink charging is complete** and click **Next**.



10. Select the connection type. For this guide that will be **Wi-Fi Network Connection**.

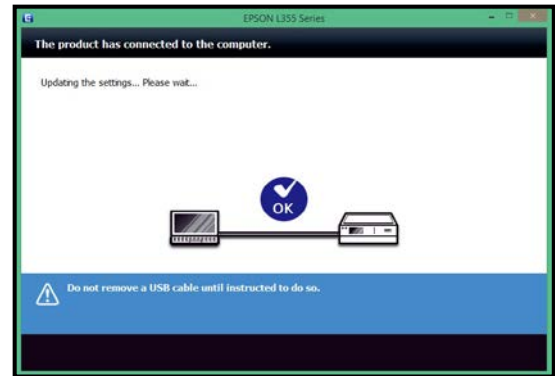
For USB setup, skip the following network related steps.



11. Click **Easy Wi-Fi Setup**
Use **WPS** if your wireless router supports the feature.



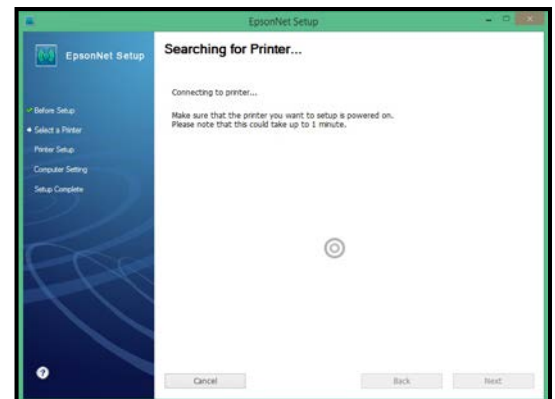
12. Connect the **USB cable** between the printer and computer.



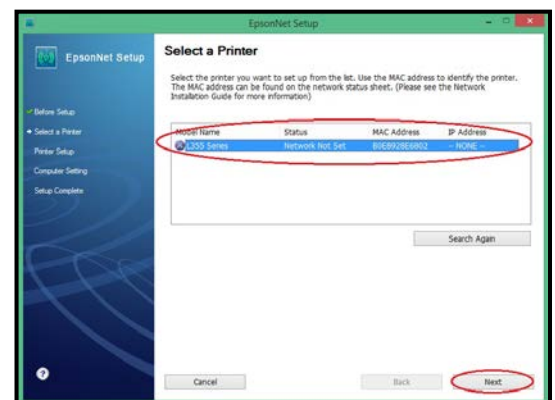
13. Click **Next** on the Firewall Warning.



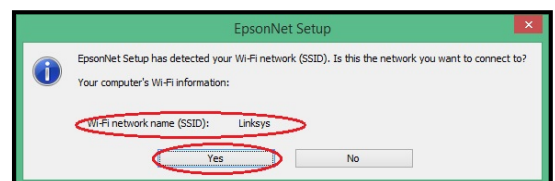
14. Wait as the printer is located.



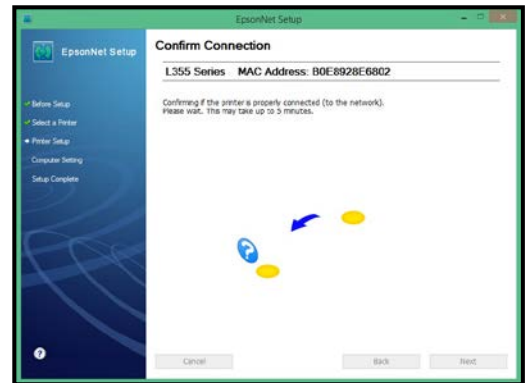
15. Once it is discovered confirm it is the correct printer and click **Next**.



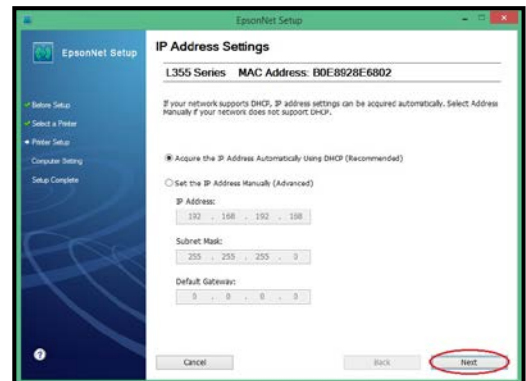
16. Confirm the correct **Wifi-Network name** and click **Yes**.



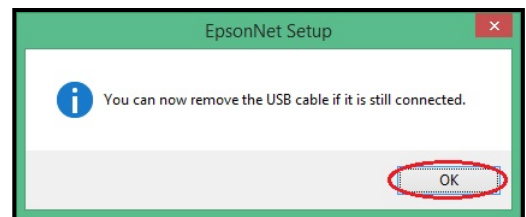
17. Wireless network settings will be sent to the printer.



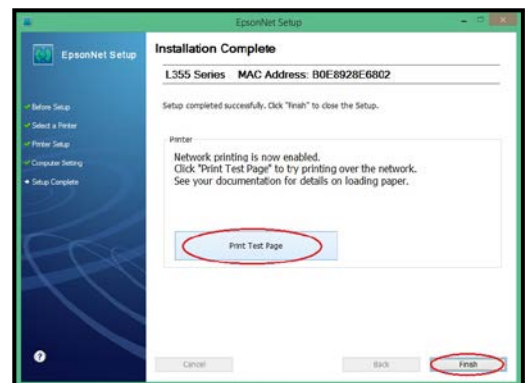
18. Set the desired IP settings. Usually just leave it the recommended setting. Click **Next**.



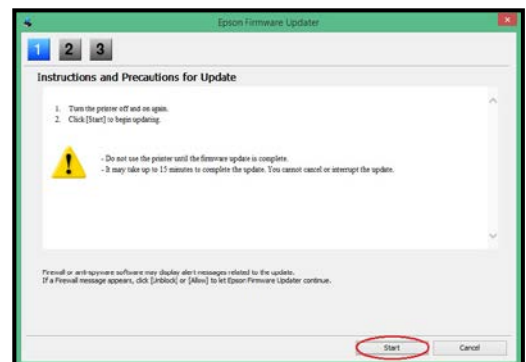
19. Remove the **USB cable**. Click **Next**.



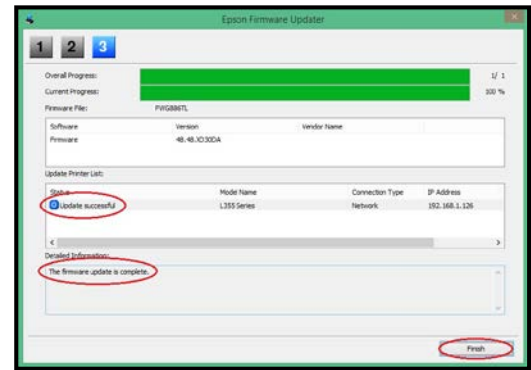
20. Click **Print Test Page** to confirm the printer is set up correctly. Then click **Finish**.



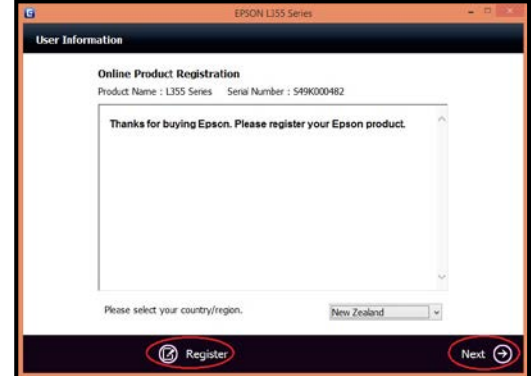
21. There may be a Firmware Update available for your printer. If there is, **read the instructions carefully**. Click **Start**.



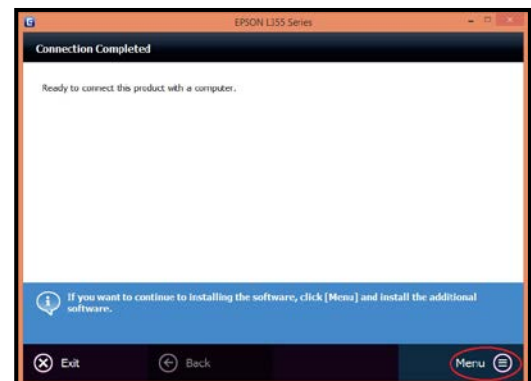
22. Once the Firmware Update is complete click **Finish**.



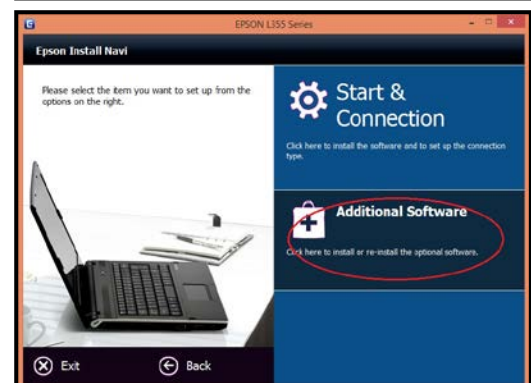
23. Click **Register** to register the printer with Epson. Then click **Next**.



24. Click **Menu** to install bundled software and the User's Guide.



25. Click **Additional Software**.



26. Select the items you want and click **Install**. When installation is completed click **Exit**.

