



# Epson Device USB Agent **Setup Guide**

---

**Contents**

***How to Use This Manual***

Marks and Symbols. . . . . 3

Screenshots Used in This Guide. . . . . 3

***Introduction***

What is the Epson Device USB Agent?. . . . . 4

Operating Environment. . . . .4

    System Requirements. . . . .4

    Ports to use. . . . .5

Setup Procedure. . . . . 5

***Setting up the Epson Device USB Agent***

Setting up a USB connection for the device. . . . . 6

Installing Epson Device USB Agent. . . . .6

Registering Devices to the Device List. . . . .9

    Discovering and Registering USB Connected  
    Devices to the Device List. . . . .9

    Adding USB Connected Devices Individually. . . 15

***Appendix***

Uninstalling Epson Device USB Agent. . . . . 19

Copyright and Trademarks. . . . .19

# How to Use This Manual

---

## Marks and Symbols



**Caution:**

*Instructions that must be followed carefully to avoid bodily injury.*



**Important:**

*Instructions that must be observed to avoid damage to your equipment.*

**Note:**

*Provides complementary and reference information.*

**Related Information**

➡ Links to related sections.

---

## Screenshots Used in This Guide

Setting items may vary depending on products and setting conditions.

# Introduction

---

## What is the Epson Device USB Agent?

The Epson Device USB Agent is software that sends information collected from an Epson device connected to the computer by USB to the Epson DC Agent.

This allows devices without network functionality to use the various services provided by Epson as well as devices that are connected directly to the network.

**Note:**

- ☐ *The computer connected to the device by USB must have Epson Device USB Agent installed.*
- ☐ *To send device information to the Epson DC Agent, the computer connected by USB must be turned on.*
- ☐ *You can connect up to four devices to one computer.*

---

## Operating Environment

### System Requirements

The following environment is necessary to use Epson Device USB Agent.

#### Computer

|                  |   |
|------------------|---|
| Operating system | Windows 10, Windows 10 x64 Edition<br>Windows 11<br>Windows Server 2016<br>Windows Server 2019<br>Windows Server 2022 |
| Runtime          | .NET Framework 4.5 or later   |
| Computer         | Operating specifications for compatible operating systems   |
| Hard disk        | At least 500 MB of free space   |
| Network          | A network environment that allows HTTPS access to Web sites on the Internet using the IPv4 protocol                   |

#### Driver

The connected device needs to operate with USB connection.

|          |   |
|----------|---|
| Printers | <input type="checkbox"/> Standard printer driver<br><input type="checkbox"/> EPSON Universal Print Driver (Version 2.67 or later) |
|----------|---|

## Introduction

### Ports to use

The following are the ports used by the Epson Device USB Agent.

- ☐ The sending port of the computer on which to install Epson Device USB Agent

The receiving port of the computer where Epson DC Agent is installed

| Notify                    | Notify                                   | Protocol    | Port  | Usage  |
|---------------------------|--|-------------|-------|--|
| Computer (Epson DC Agent) | Client Computer (Epson Device USB Agent) | HTTPS (TCP) | 64122 | Receives requests from external applications such as the Epson DC Agent. |

## Setup Procedure

Follow the procedures below to setup the Epson Device USB Agent.

**Note:**

*Prepare the computer on which the Epson DC Agent is installed.*

| Procedure |                                     | Operations   | Computer  |
|-----------|-------------------------------------|--|---|
| 1         | Connect device by USB               | Make the device available to the computer on which you are installing the Epson Device USB Agent. <ul style="list-style-type: none"> <li><input type="checkbox"/> Install the driver for the device</li> <li><input type="checkbox"/> Connect the device by USB</li> </ul> | Computer on which to install the Epson Device USB Agent |
| 2         | Make software settings              | <input type="checkbox"/> Install the Epson Device USB Agent  | Computer on which to install the Epson Device USB Agent |
| 3         | Register the printers to be managed | Register the device to the Epson DC Agent. <ul style="list-style-type: none"> <li><input type="checkbox"/> Discover and register devices</li> <li><input type="checkbox"/> Register the printers manually</li> </ul>   | Computer on which the Epson DC Agent is installed       |

# Setting up the Epson Device USB Agent

---

## Setting up a USB connection for the device

Before installing the Epson Device USB Agent, make sure that the computer it will be installed on has a USB port that allows devices to be connected.

- ☐ Installing the device driver
- ☐ Connecting the device to your computer by USB

---

## Installing Epson Device USB Agent

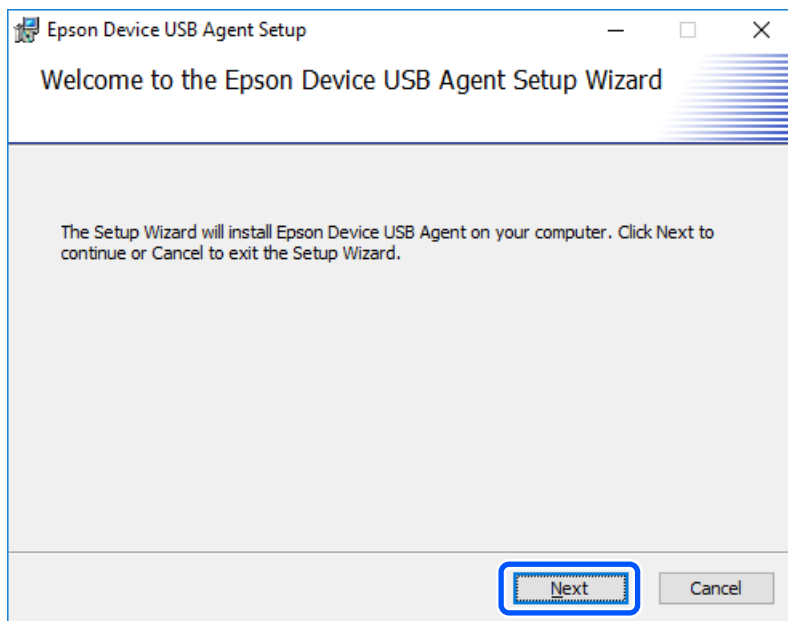
Install Epson DC Agent.

Log in to the computer as a user with administrator privileges.

**Important:**

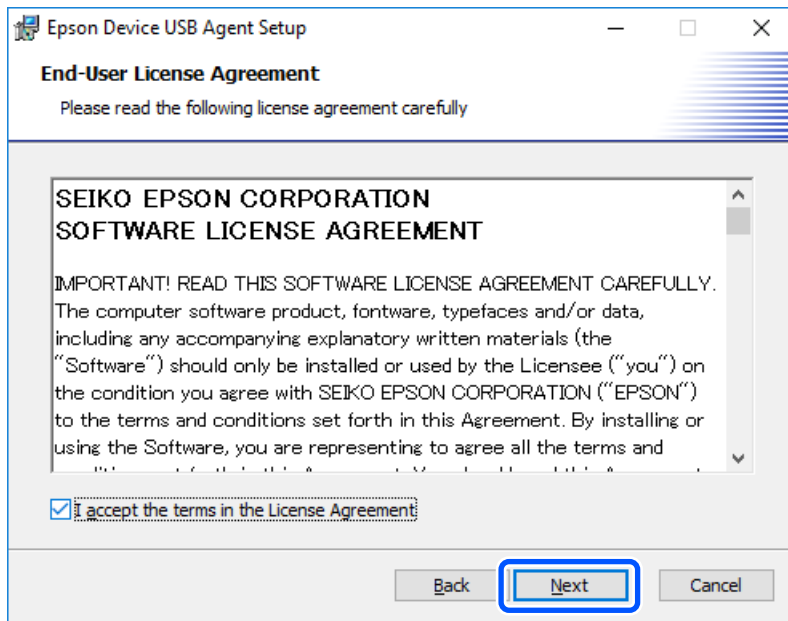
*Place the EDUSBAgent.exe.config (configuration file) in the same folder as the installer and start the installer.*

1. Start one of the following installers according to your computer's operating system.
  - ☐ For 32-bit operation system: EDUSBAgentSetup86.msi
  - ☐ For 64-bit operation system: EDUSBAgentSetup64.msi
2. Click **Next**.

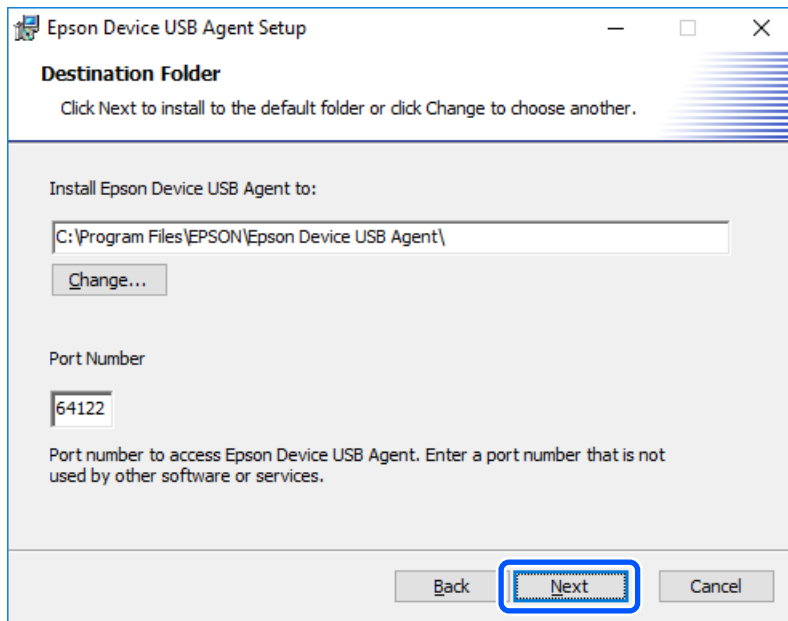


## Setting up the Epson Device USB Agent

3. After checking the License Agreement, select **I accept the terms in the License Agreement**, and then click **Next**.



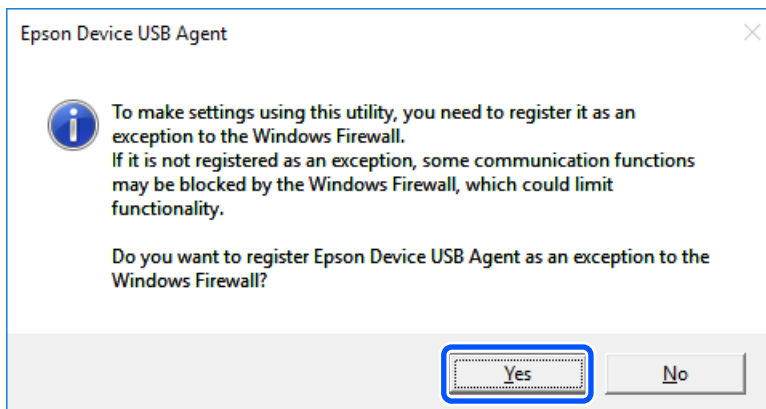
4. Check the installation details, and then click **Next**.



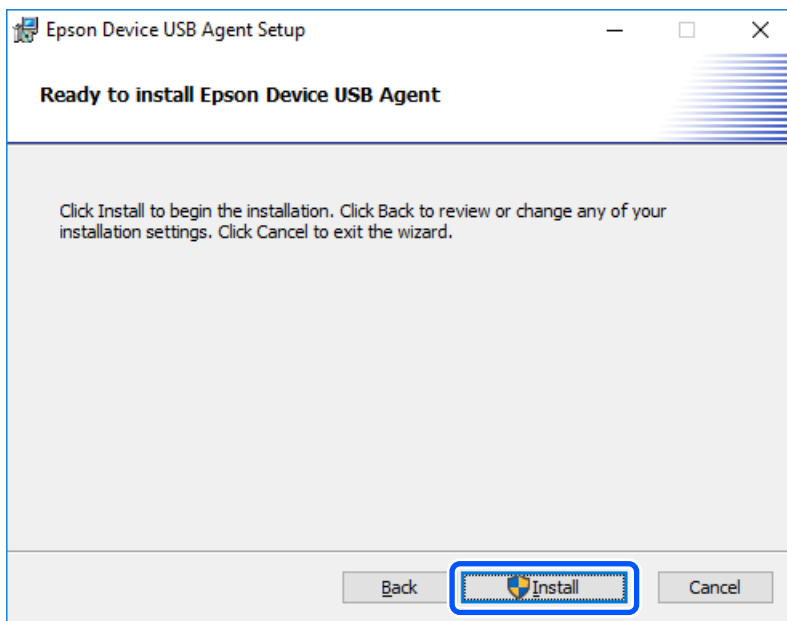
## Setting up the Epson Device USB Agent

5. When the following screen is displayed, click **Yes**.

If you do not allow the exception, device information cannot be acquired.



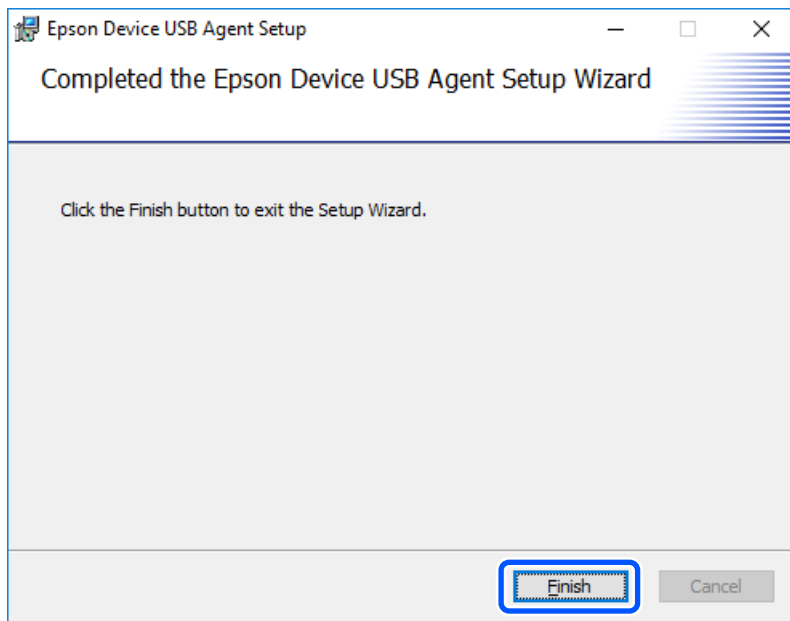
6. Click **Install**.





## Setting up the Epson Device USB Agent

7. Click **Finish**.



8. Restart your computer and device.

Device information can now be acquired.

This completes this section. Next, register the device to the device list in the Epson DC Agent.

---

## Registering Devices to the Device List

You can register a device connected by USB to a computer on which the Epson Device USB Agent is installed to the Epson DC Agent device list. You can register devices using the following methods.

☐ Discovering Devices

Discover Epson devices connected to the computer by USB, and then register them.

☐ Specifying devices individually

Register a device by specifying a device ID or serial number.

## Discovering and Registering USB Connected Devices to the Device List


You can search for devices connected to a computer by USB and register them to the Epson DC Agent device list.

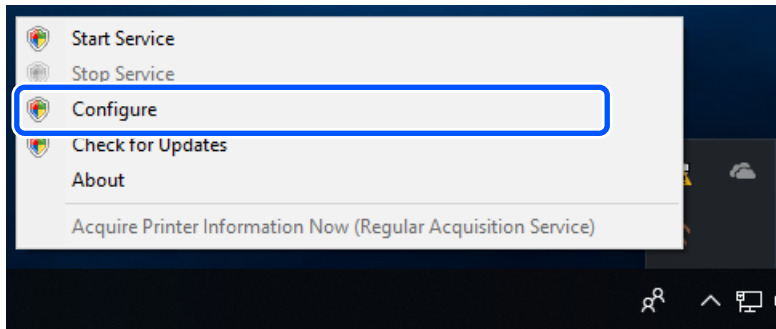
By setting discovery conditions, you can perform discoveries by limiting the IP address range or discoveries that exceed segments. See the Epson DC Agent manual for information on setting discovery conditions.

**Note:**

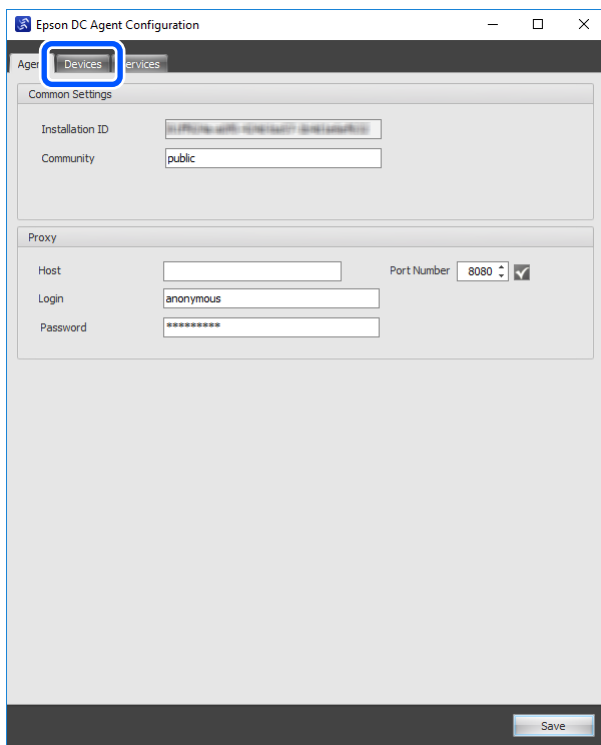
*Epson devices in the same segment as the computer on which Epson DC Agent is installed can be discovered regardless of the discovery conditions.*

## Setting up the Epson Device USB Agent

1. Right-click the  icon in the tray, and then click **Configure**.



2. Click the **Devices** tab.

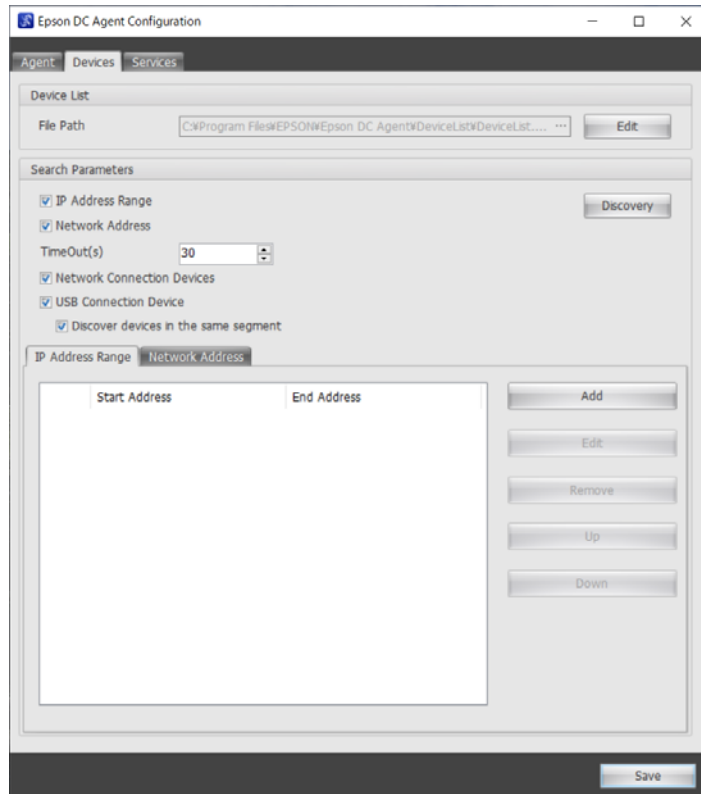


## Setting up the Epson Device USB Agent

3. Select the discovery conditions you want to use and **USB Connected Device**, and then set TimeOut(s) if necessary.

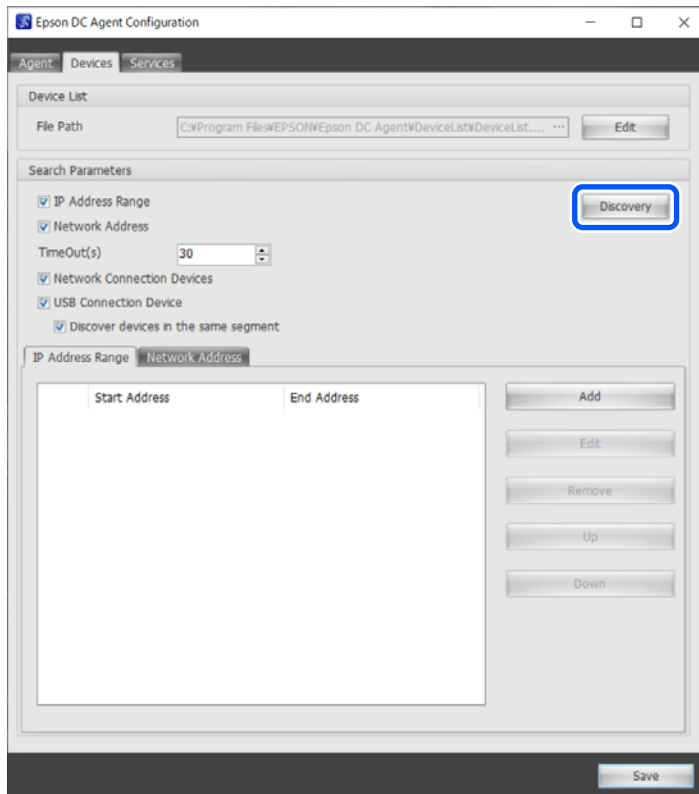
**Note:**

- ☐ When you select **Discover devices in the same segment**, it performs discovery within the same segment only. Note that discovery may take some time for USB connected devices.
- ☐ To clear the check from **Discover devices in the same segment**, set **IP Address Range**.



## Setting up the Epson Device USB Agent

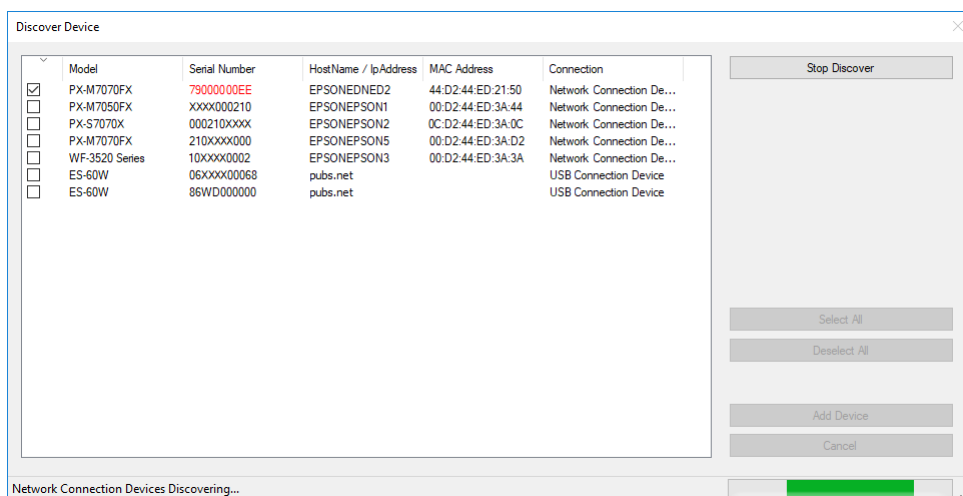
### 4. Click **Discovery**.



The Discover Device screen is displayed and the search starts.

**Note:**

- ☐ If you want to stop discovery, click **Stop Discover**.
- ☐ If you want to perform discovery again, click **Discovery**.
- ☐ Discovery may take some time to complete depending on your environment. It is safe to stop the search once the target devices have been found.
- ☐ If you cannot find the devices you are looking for, review the discovery conditions or enter device information, and add them individually.

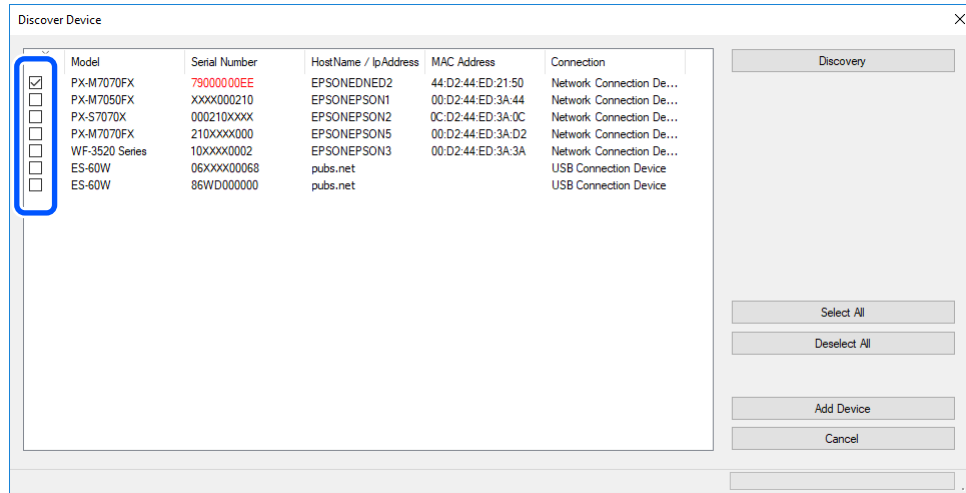


## Setting up the Epson Device USB Agent

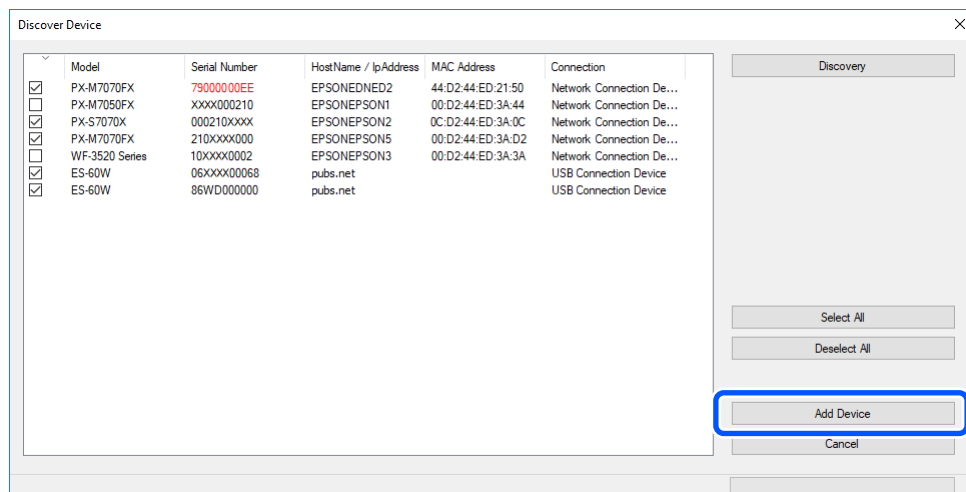
- Select the device you want to register.

**Note:**

Clicking **Select All** selects all devices, and clicking **Deselect All** deselects all devices.

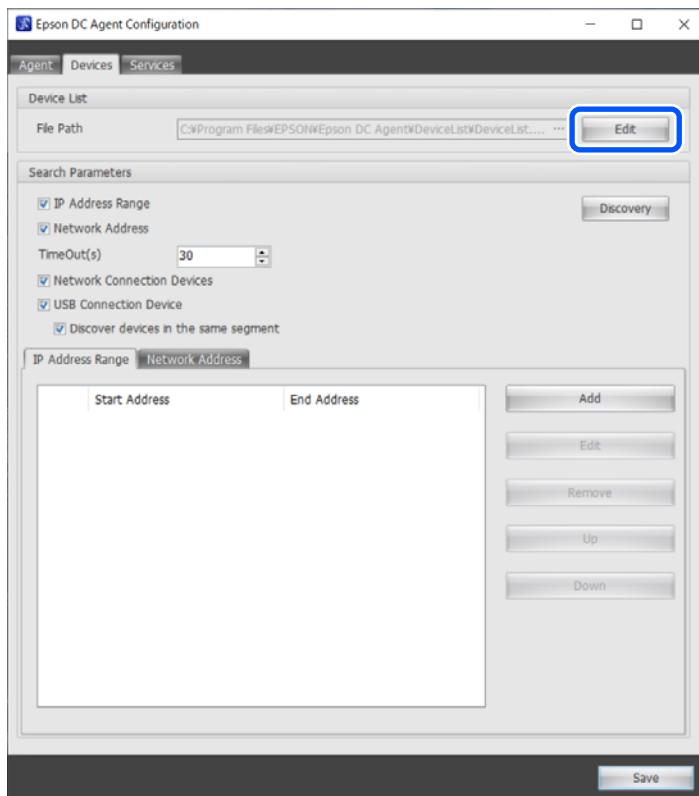


- Click **Add Device**.



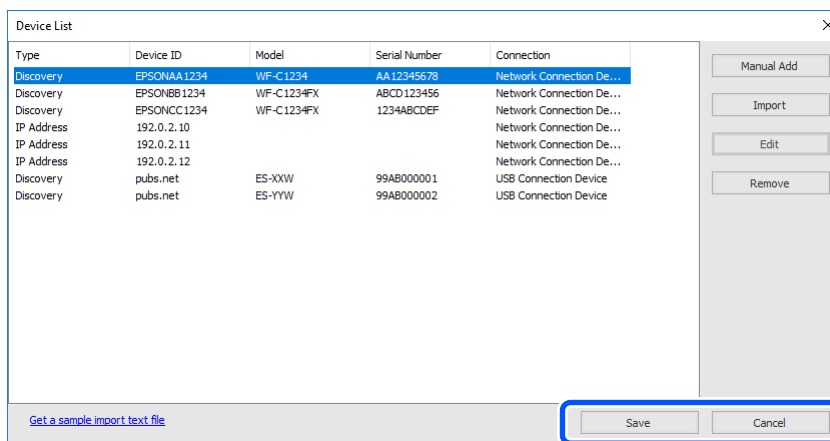
## Setting up the Epson Device USB Agent

7. Click **Edit**.



Make sure that the device connected by USB is registered to the device list.

8. Click **Save** or **Cancel**.

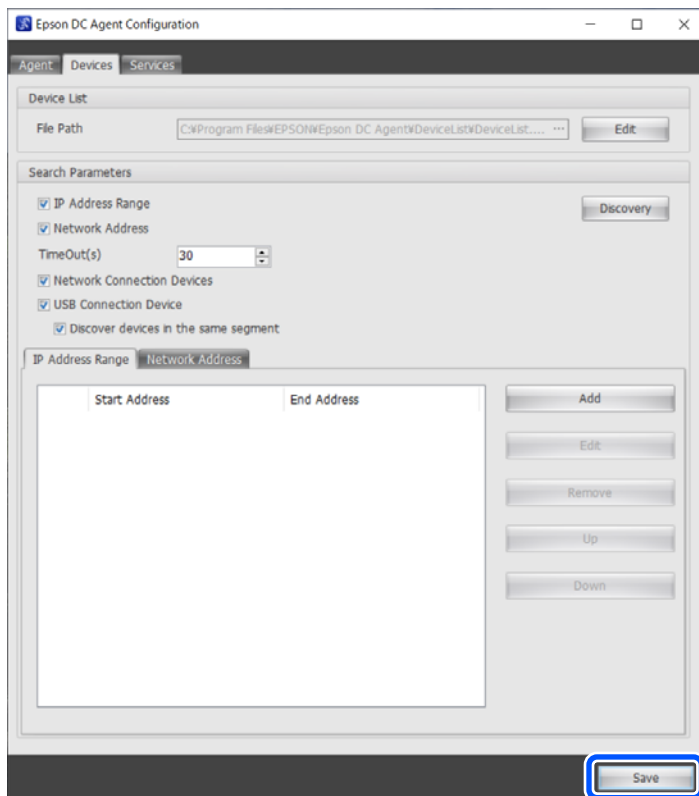


9. Click **Save**.

Settings are saved and the setting screen closes. Restart the Epson DC Agent.


## Setting up the Epson Device USB Agent

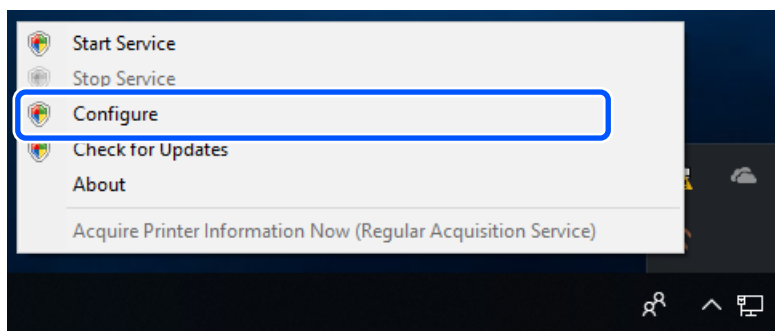
To configure other settings, continue making settings without clicking **Save**.



## Adding USB Connected Devices Individually

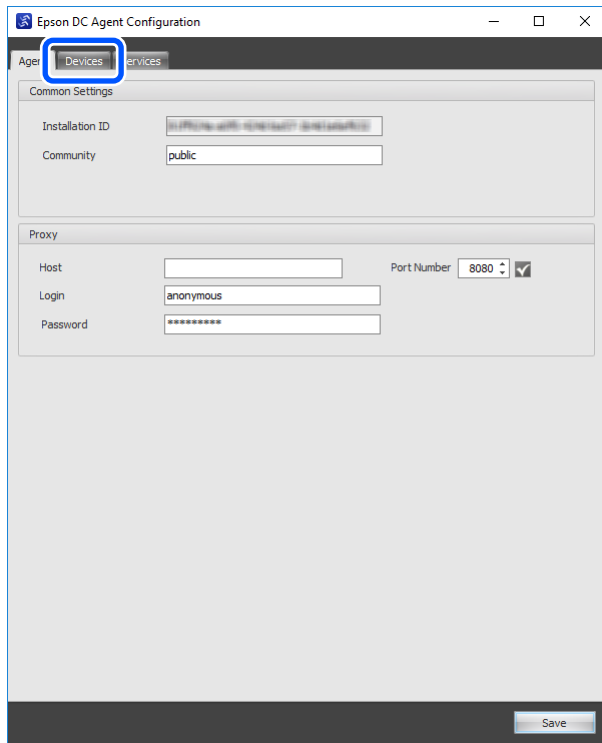
You can enter device information for devices connected to a computer by USB and register them individually.

1. Right-click the  icon in the tray, and then click **Configure**.

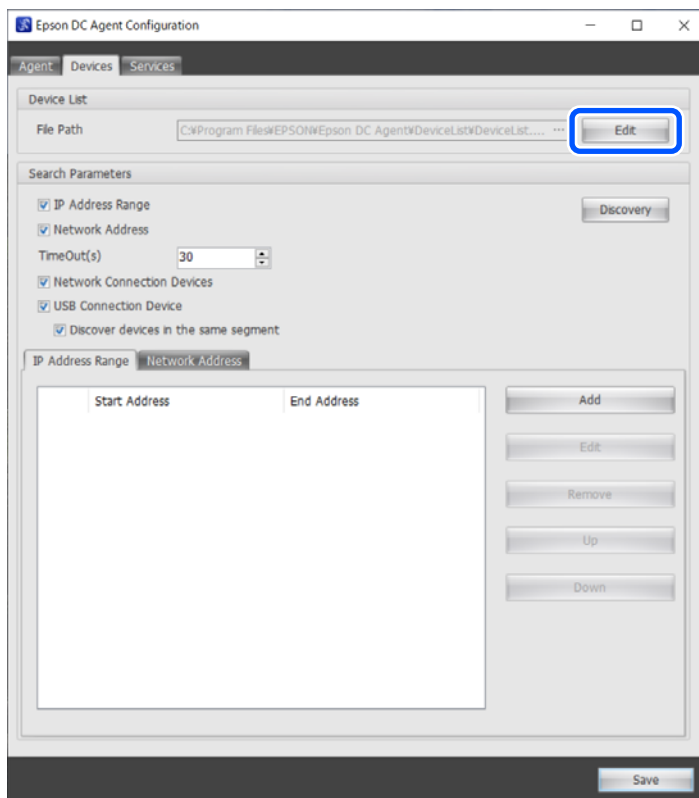


## Setting up the Epson Device USB Agent

- Click the **Devices** tab.



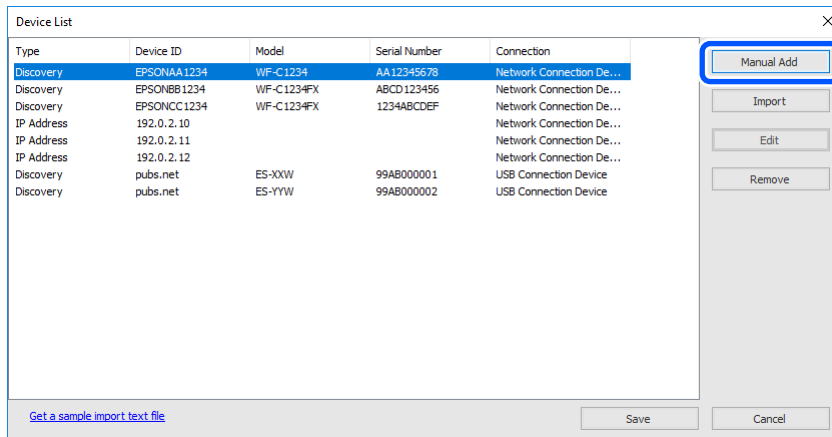
- Click **Edit**.





## Setting up the Epson Device USB Agent

### 4. Click **Manual Add**.



5. Enter the device information by referring to the following, and then click **OK**.  
To register multiple devices, repeat from step 4.

Device List

Connection: USB Connection Device

Type: Host Name

Device ID: EPSONXXXXXX

Serial Number: 0123456789

OK Cancel

| Item          | Description   |
|---------------|---|
| Connection    | Confirm that <b>USB Connection Device</b> is displayed.   |
| Type          | Select from <b>IP Address</b> and <b>Host Name</b> .  |
| Device ID     | <p>When you select <b>IP Address</b> as the <b>Type</b>, enter the IPv4 address of the computer on which Epson Device USB Agent is installed.</p> <p>Example: 192.0.2.123</p> <p>When you select <b>Host Name</b> as the <b>Type</b>, enter the domain name of the computer on which Epson Device USB Agent is installed.</p> <p>Example: WINPCXXXX</p> |
| Serial Number | Enter the serial number of the device connected by USB.   |

Setting up the Epson Device USB Agent

6. When all devices have been entered, click **Save**.

Device List

| Type       | Device ID   | Model      | Serial Number | Connection               |
|------------|-------------|------------|---------------|--------------------------|
| Discovery  | EPSONAA1234 | WF-C1234   | AA12345678    | Network Connection De... |
| Discovery  | EPSONBB1234 | WF-C1234FX | ABCD123456    | Network Connection De... |
| Discovery  | EPSONCC1234 | WF-C1234FX | 1234ABCDEF    | Network Connection De... |
| IP Address | 192.0.2.10  |            |               | Network Connection De... |
| IP Address | 192.0.2.11  |            |               | Network Connection De... |
| IP Address | 192.0.2.12  |            |               | Network Connection De... |
| Discovery  | pubs.net    | ES-XXW     | 99AB000001    | USB Connection Device    |
| Discovery  | pubs.net    | ES-YYW     | 99AB000002    | USB Connection Device    |
| Host Name  | EPSONXXXXXX |            | 0123456789    | USB Connection Device    |

Manual Add

Import

Edit

Remove

[Get a sample import text file](#)

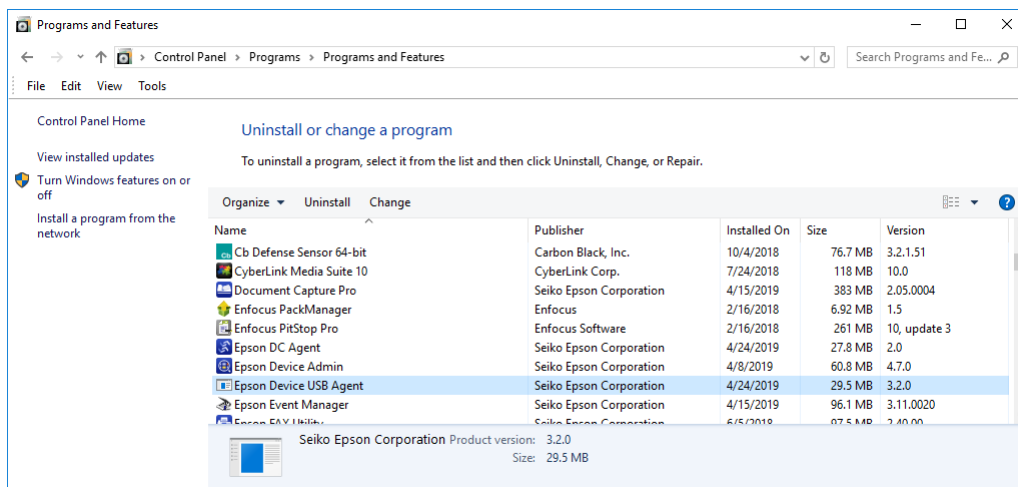
Save

Cancel

# Appendix

## Uninstalling Epson Device USB Agent

1. Open Windows control panel, click **Add or Remove Programs**, **Uninstall a program**, or **Programs and Features**.
2. Click Epson Device USB Agent, and then click **Uninstall**.



This completes this section.

## Copyright and Trademarks

- ❑ Microsoft, Windows, and Windows Server are registered trademarks of the Microsoft Corporation in the US and other countries.
- ❑ General Notice: Other product names used herein are for identification purposes only and may be trademarks of their respective owners. Epson disclaims any and all rights in those marks.

©Seiko Epson Corporation 2023