

# INSTALLATION PROJECTION RANGE

Innovation that exceeds expectations

**EPSON**  
EXCEED YOUR VISION



**TRUE  
COLOURS**  
Brighter, vivid projection from Epson

**3LCD**

The best selling projectors  
**1**  
Epson Projectors  
in the world



# Quality is in our DNA

Our uncompromising commitment to manufacturing quality and meticulous design detail add power to your presentations. Whether you choose our acclaimed lamp models or our latest laser projectors, you can rely on a level of quality that consistently leaves our competitors standing.

## A history of world firsts

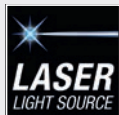
Building on the success of the world's first 12,000lm 3LCD laser projector<sup>1</sup> (EB-L1505U), the new EB-L30000U takes brightness to 30,000lm. The inorganic LCD panels and phosphor wheel have superior heat and light-resistance to deliver superb quality, new levels of reliability and bright, vibrant images for extremely long periods.

## Built to last

Epson projectors are built to excel in challenging environments. The EB-L30000U delivers flawless performance even in dusty or smoky conditions because key components including the inorganic panels, inorganic phosphor wheel and laser bank are housed in a sealed structure. It also has a pipe frame and base plate structure to greatly improve casing durability.

## The power of research

We are committed to remaining world number one for projectors<sup>2</sup>, with 70% of our Research and Development team of 1,100 engineers dedicated to projectors. We never stop working to find ways to give you the latest in quality, reliability and flexibility.



### 3LCD bolder, brighter colour

Our 3-chip, solid-state optical engines deliver vibrant realistic images and optimise white balance and black colour matching for seamless blending. Equally high White and Colour Light Output means that images are not only extremely consistent, they are also three times brighter than 1-chip DLP projectors<sup>3</sup>, with no rainbow effect.



Conventional projectors – using 1-chip DLP technology



Epson 3LCD technology – three times brighter than competitor technology<sup>3</sup>

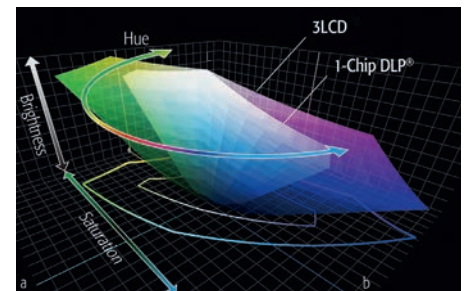


### Consistent performance

Match brightness levels to your situation with more precise adjustments in increments of 1%, and maintain specific levels over a prolonged period of time with constant brightness mode<sup>4</sup>. This is useful in places like art galleries where consistent, accurate projections reflect the artist's vision.

### Wider colour gamut

Achieve up to three times the colour gamut of 1-chip DLP projectors with Epson's HTPS panels. This core technology produces more vibrant colours with more accurate colour reproduction. You can also adjust hue, saturation and brightness for each colour in the RGB and CMY colour models.





# Breakthrough projector technology



Our technological innovations give you the power to project images that are simply better than the competition, and our latest laser projectors represent another big step forward in brightness, flexibility and reliability. Whatever your needs and budget, you have the creative freedom to entertain and inspire.

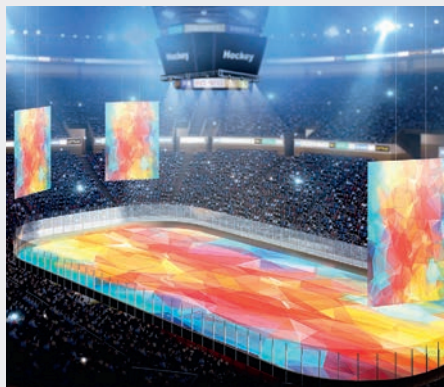
## Flexible 360° installation

Enhance your presenting possibilities with 360° installation and project from any angle with no loss of brightness or image quality. Being able to install your projector just about anywhere in any orientation brings floors and ceilings into play so you can create images in surprising places that really capture attention.



## Big impact projection

Panoramic and portrait projection are ideal for fashion shows and product launches. Create seamless multi-projector images on one giant screen or use portrait mode to bring out the best in digital signage and displays. Edge blending and scaling perfectly matches each image in terms of brightness and colour, with no visible joins.







### Built-in camera

Keep images consistent and maintenance to a minimum with the innovative built-in camera on select laser projectors. It detects screens that have become uneven or discoloured over time or notices subtle inconsistencies between multiple projectors and makes necessary adjustments to ensure smooth, accurate, uniform projections.

### Simple control

Use features such as EPSON Projector Management software and EPSON iProjection software to monitor and control projectors, with fleet control across a network or on a web browser to keep track of up to 2,000 projectors. The latest models feature a newly designed OSD Control Pad function that shows a representation of lens conditions on a smart device.

### Get connected

A wide range of connectivity to devices, memory storage and networks make it simple to get set up and integrated. This includes wireless networking and HDBaseT for Full HD audio and video control from up to 100m away with a Category 5e/6 cable, ideal for large venues.

### Store your settings

We design everything to make presenting as smooth and as simple as possible, including a lens memory feature which stores up to 10 settings including lens shift position, focus and projection sizes. This makes it easy to adjust the projector to match the aspect ratio of your content.



### Lenses to match your vision

Choose the ideal lens for your presenting environment from a wide range of easily interchangeable, motorised options available for many models. These maximise quality and versatility and make it easier to use an existing ceiling or wall mount. The ultra-short-throw zero offset lens produces a 200-inch screen from only 1.5m away, ideal for small spaces.



# Projection without limits

Take your visual creativity to the next level with our breathtaking laser installation projectors. Enjoy unprecedented imaging power with the latest exclusive Epson technologies and impress audiences with the future of large scale presenting.

Transform the way your audiences look at corporate and higher education presenting, visitor attractions, museums and galleries and stunning digital signage at shopping centres, sports events and more. Our new laser projectors prove that we never stop taking the world of presenting forward.

### Superb image quality

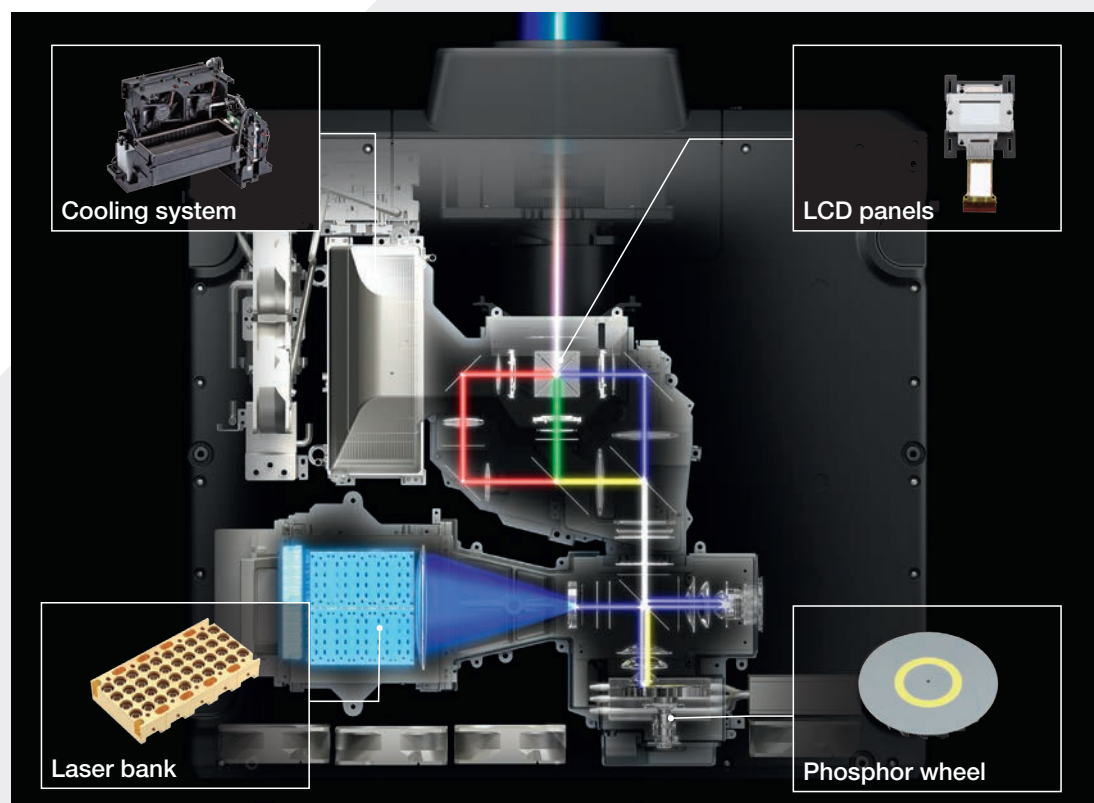
Our laser projectors have redefined image quality, from the industry's first 12,000 lumen native 4K 3LCD projector<sup>5</sup> to the world's brightest 3LCD projector with 30,000lm (EB-L30000U)<sup>6</sup>. This, combined with the improved texture and exceptional sharpness, clarity and detail of features like our 4K enhancement technology, keep us at the cutting edge of projectors.

### Installation flexibility

Our laser projectors give you extra creative potential in the widest range of presenting venues. The EB-PU22 Series is particularly compact for easy installation, while all laser models offer 360° installation and wide lens shift. This means you can project in any direction and use extensive adjustment to create perfect images on just about any surface. Portrait projection is simple, and when you use multiple projectors to create an even bigger image, edge blending makes joins invisible<sup>4</sup>.

### High reliability

Our newly developed inorganic phosphor wheel has superior light and heat-resistance and delivers excellent reliability. This works perfectly with our inorganic LCD panels to produce bright, vibrant images for extremely long periods. In fact, you can rely on a light source that is maintenance-free for 20,000 hours. Our projectors keep you working even in environments where dust and smoke may be common, and the specialised sealed structure of the EB-L30000U maximises image quality as well as reliability.





## **EB-L700 Series**

Fixed lens model  
EB-L520U, EB-L630U,  
EB-L630SU, EB-L635SU,  
EB-L730U, EB-L735U



Designed for laser-focused learning, Epson's L700 Series offers up to 7,000 lumens brightness for powerful performance, flexible placement and exceptional image quality in schools and meeting rooms. Different from other classroom display technologies, these laser solutions deliver images up to 500 inches with 16:10 or ultra-wide 16:6 displays for optimal visibility in hybrid education and meeting room settings.

The L-Series comes equipped with versatile connectivity options and easy installation tools, including lens shift<sup>4</sup>, HDBaseT and 360-degree placement flexibility, along with upgraded Miracast<sup>®</sup> and screen sharing for enhanced collaboration. Powered by a virtually maintenance-free, 20,000-hour laser light source with no lamps to replace, the L700 Series is designed for reliable operation with energy-saving features for a long lifecycle.

## **EB-PU Series**

Interchangeable lens model  
EB-PU1007W, EB-PU1008W,  
EB-PU1008B, EB-PU2010W,  
EB-PU2010B



The PU series are compact and lightweight high lumen laser projectors with interchangeable lenses designed for dynamic environments which require a wide range of flexibility.

The PU series delivers high impact performance with advanced installation features, WUXGA resolution and 4K enhancement. Compatible with a wide range of lens options, the PU series supports content management, and remote monitoring and control for added peace of mind. These high brightness laser projectors are ideal for rental and staging events, corporate settings, higher education, visitor attractions and digital signage installations.

- White and Colour Light Output from 7000lm to 10,000lm



## **EB-PU22 Series**

Interchangeable lens model  
EB-PU2213B, EB-PU2216B, EB-PU2220B

Project truly stunning images easily and make a big impact at a very wide range of venues and events with presenting flexibility to match. With very high reliability and almost no maintenance these projectors can handle the busiest workloads. The PU22 series have a robust, compact chassis for simple integration into existing infrastructure. Featuring support for HDR, 360-degree installation flexibility, tile assist, 4K enhancement and a sealed optical and laser engine to protect from dust and smoke, these large venue laser projectors are ideal for rental and staging events, lecture halls, churches, and digital signage installations.

- White and Colour Light Output from 13,000lm to 20,000lm



## **EB-L30000U**

Interchangeable lens model  
EB-L30000U

Create stunning visuals at any venue on a very big scale with a groundbreaking combination of 30,000lm brightness, beautiful images, extreme reliability and flexible presenting options.

This model is compact and lightweight but also highly durable and robust. Featuring a sealed optical system for enhanced performance in dusty or smoky environments and a combined water and air cooling system for enhanced reliability.

# Large venue innovation

Harness the power of an installation projector with effortless simplicity. Our projectors offer outstanding image quality with brilliantly simple setup, features and operation.

Our reliable projectors are ideal for permanent installations, but also surprisingly compact; meaning they fit seamlessly into any hard working rental fleet with changing venues or users.

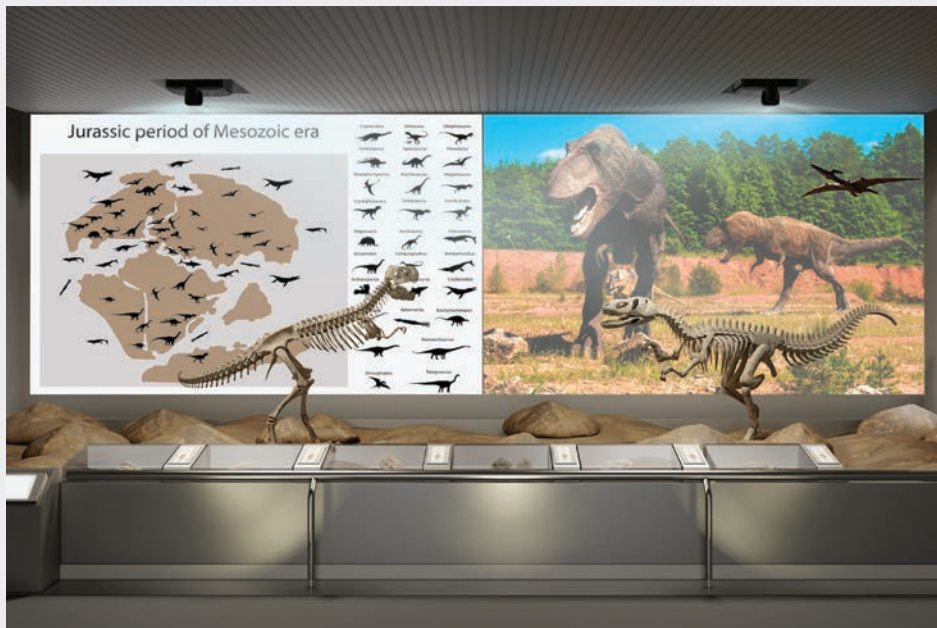
## The perfect image

Project a perfectly uniform image, enjoy flexible installation options and precision control with wide lens choices and adjustment, image optimisation and manual and automatic controls with lens shift and keystone correction.

For advanced projection applications, such as panoramas and curved surfaces on the entire façade of a building, projection mapping software will allow the creative projection of images onto curved surfaces and "bend" images around corners.

## Easy-use Miracast

Work quickly by broadcasting directly from your Android device or latest Intel computer onto the screen with the Miracast/WiDi Screen Mirroring protocol. What you see on the small screen is what you'll get on the big screen.



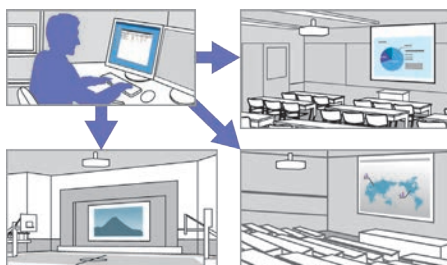
## Get connected

Project your High-Definition content using a variety of HD devices via the HDMI input. Make fast connections in any venue and network setup with interfaces including HDMI, DVI, DisplayPort.



### Collaborative presenting

Multiple users can connect simultaneously to one projector using Epson iProjection, with up to four user screens displayed at any one time. Present from two different sources simultaneously with the side-by-side split screen function. Compare and contrast information from a separate laptop or Epson Document Camera for 3D image projection.



### High reliability

Easily replaceable filters help to keep maintenance to a minimum, ensuring that your projections remain bright and clear for longer. Thanks to its dustproof construction, the EB-PU22 Series is even filter-free, eliminating the need for filter changes altogether.

### Take control

Take control with Epson Projector Management software for real time monitoring and control, from PC-free and wireless presenting to centralised monitoring of your entire projector fleet.

### Content Management Software

Have the flexibility to customise content and features to fit your own use with Epson Projector Content Management Software. Gain complete control over your presentations by creating and scheduling playlists, adding visual effects, or applying your own remote short cuts and filters. The Epson Content Management Software enables users to quickly and easily sort and distribute content without any additional costs.

Compatible with EV-110, EV-115, EB-L735U, L730U, L635SU, L630SU, L630U, L520U, 805F, L200SW, PU2010B, PU2010W, PU1008B, PU1008W, PU1007W, PU2213B, PU2216B, PU2220B.



\*Not all features are available on all products, please check specifications on pages 10-12.

## EB-L Series / PU Series







Model	EB-L520U/ EB-L630U	EB-L630SU/ EB-L635SU	EB-L730U/ EB-L735U	EB-PU1007W	EB-PU1008W/ EB-PU1008B	EB-PU2010W/ EB-PU2010B
Resolution	WUXGA (1920 x 1200)	WUXGA (1920 x 1200)	WUXGA (1920 x 1200)	WUXGA (1920 x 1200)	WUXGA (1920 x 1200)	WUXGA (1920 x 1200)
Native aspect	16:10	16:10	16:10	16:10	16:10	16:10
Light Source	Laser	Laser	Laser	Laser	Laser	Laser
White and Colour Light Output (lumens) normal / eco	5,200 / 3,640 6,200 / 4,340	6,000 / 4,200	7,000 / 4,900	7,000 / 4,900	8,500 / 5,950	10,000 / 7,000
Contrast ratio	2,500,000:1	2,500,000:1	2,500,000:1	2,500,000:1	2,500,000:1	2,500,000:1
Laser life (hours) normal / eco	20,000 / 30,000	20,000 / 30,000	20,000 / 30,000	20,000 / 30,000	20,000 / 30,000	20,000 / 30,000
Throw ratio in native aspect (standard lens)	1.35 - 2.20	0.80 - 1.07	1.35 - 2.20	1.44 - 2.33	1.44 - 2.33	1.57 - 2.56
Image size (diagonal, inches)	50 - 500	50 - 200	50 - 500	50 - 1,000	50 - 1,000	60 - 1,000
Zoom (standard lens)	Optical x1.6	Digital x1.35	Optical x1.6	Optical x1.6	Optical x1.6	Optical x1.6
Vertical keystone Horizontal keystone (standard lens)	Manual ±30° Manual ±30°	Manual ±30° Manual ±30°	Manual ±30° Manual ±30°	Manual ±45° Manual ±30°	Manual ±45° Manual ±30°	Manual ±45° Manual ±30°
Lens shift (standard lens) vertical / horizontal	±50% / ±20%* (Manual)	±50% / ±20% (Manual)	±50% / ±20% (Manual)	±67% / ±30% (Powered)	±67% / ±30% (Powered)	±60% / ±18% (Powered)
Speaker output	10W	10W	10W	N/A	N/A	N/A
Connectivity	HDBaseT, HDMI out x1*, HDMI in x2, VGA in x2, VGA out x1, Audio out, Audio in x2, Ethernet interface (100 Base-TX / 10 Base-T), RS-232C, USB 2.0 Type A (Content playback, document camera), USB 2.0 Type B (Service Only)			HDBaseT, HDMI in x1, DVI in x1, VGA in x1, Audio out x1, Remote x1, Ethernet interface (100 Base-TX / 10 Base-T), RS-232C, USB 2.0 Type A (Optional Wireless Lan, Content playback), USB 2.0 Type B (Service Only). BNC in/out x 1 (only on PU2010WNL/ EB-PU2010BNL)		
Audio connectivity	Stereo mini in x2 Stereo mini out	Stereo mini in x2 Stereo mini out	Stereo mini in x2 Stereo mini out	Stereo mini out	Stereo mini out	Stereo mini out
Remote Camera Access	N/A	N/A	N/A	Optional with ELPEC01	Optional with ELPEC01	Optional with ELPEC01
Professional Tool	Available	Available	Available	Available	Available	Available
Networking	LAN (RJ45) & built-in* wireless LAN unit	LAN (RJ45) & built-in wireless LAN unit	LAN (RJ45) & built-in wireless LAN unit	LAN (RJ45) & optional wireless LAN unit	LAN (RJ45) & optional wireless LAN unit	LAN (RJ45) & optional wireless LAN unit
Other features	Laser light source, fixed lens, manual zoom, focus & lens shift*, USB direct content playback, content management software inclusion, 360° installation, portrait projection, constant brightness mode.	Laser light source, fixed short throw lens, manual zoom, focus & lens shift, USB direct content playback, content management software inclusion, 360° installation, portrait projection, constant brightness mode.	Laser light source, fixed lens, manual zoom, focus & lens shift, USB direct content playback, content management software inclusion, 360° installation, portrait projection, constant brightness mode.	Laser light source, interchangeable lens options including zero offset UST lens, powered zoom, focus & lens shift, lens memory, 4K enhancement, USB direct content playback, content management software inclusion, 360° installation, portrait projection, constant brightness mode, art-net support, external camera option, external air filter option, NFC feature with configuration tool app inclusion.		
Noise (dB) normal / eco	31 / 23 38 / 27	38 / 27	38 / 27	34 / 30	36 / 30	37 / 30
Weight (kg)	7.7 8.4	8.4	8.4	16.4	16.4	17
Dimensions WxDxH (mm) including feet	440 x 339 x 136	440 x 339 x 136	440 x 339 x 136	545 x 436 x 189	545 x 436 x 189	545 x 436 x 189
Power consumption (W) (normal / eco)	293 / 223 345 / 258	345 / 258	345 / 258	431 / 366	535 / 452	535 / 452
Power consumption (W) standby / comm. Off	2 / 0.5	2 / 0.5	2 / 0.5	2 / 0.5	2 / 0.5	2 / 0.5
Projector warranty	Please refer to Epson website for warranty details					

\*Lens shift function, HDMI out are not available and wireless connectivity is optional on EB-L520U



## EB-PU22 Series / L Series



Model	EB-PU2213B	EB-PU2216B	EB-PU2220B	EB-L30000UNL
				
Resolution	WUXGA (1920 x 1200)	WUXGA (1920 x 1200)	WUXGA (1920 x 1200)	WUXGA (1920 x 1200)
Native aspect	16:10	16:10	16:10	16:10
Light Source	Laser	Laser	Laser	Laser
White and Colour Light Output (lumens) normal / eco	13,000 / 9,100	16,000 / 11,200	20,000 / 14,000	30,000 / 21,000
Contrast ratio	2,500,000:1	2,500,000:1	2,500,000:1	2,500,000:1
Laser life (hours) normal / eco	20,000 / 30,000	20,000 / 30,000	20,000 / 30,000	20,000 / 30,000
Throw ratio in native aspect (standard lens)	1.57 – 2.56	1.57 – 2.56	1.57 – 2.56	1.74 – 2.35
Image size (diagonal, inches)	60 – 1000	60 – 1000	60 – 1000	100 – 1000
Zoom (standard lens)	Optical x1.6	Optical x1.6	Optical x1.6	Optical x1.35
Vertical keystone Horizontal keystone (standard lens)	Manual ±45° Manual ±30°	Manual ±45° Manual ±30°	Manual ±45° Manual ±30°	Manual ±45° Manual ±30°
Lens shift (standard lens) vertical / horizontal	±60% / ±18% (Powered)	±60% / ±18% (Powered)	±60% / ±18% (Powered)	±60% / ±30% (Powered)
Connectivity	HDBaseT, HDMI in x1 (HDCP 2.3), DVI in x1, BNC in, BNC out, D-sub 15-Pin (RGB) in, USB 2.0 Type A (for Optional Wireless LAN) x2, USB 2.0 Type B x1 (Service Only), RS232C	HDBaseT, HDMI in x1 (HDCP 2.3), DVI in x1, BNC in, BNC out, D-sub 15-Pin (RGB) in, USB 2.0 Type A (for Optional Wireless LAN) x2, USB 2.0 Type B x1 (Service Only), RS232C	HDBaseT, HDMI in x1 (HDCP 2.3), DVI in x1, BNC in, BNC out, D-sub 15-Pin (RGB) in, USB 2.0 Type A (for Optional Wireless LAN) x2, USB 2.0 Type B x1 (Service Only), RS232C	HDBaseT, BNC in, HDMI (HDCP 2.2), DVI in, VGA out, VGA in, Ethernet interface (100 Base-TX / 10 Base-T), RS-232C, USB 2.0 Type B (Service Only), HD-SDI, Art-Net
Audio connectivity	Stereo mini out	Stereo mini out	Stereo mini out	N/A
Remote Camera Access	Optional with EC01	Optional with EC01	Optional with EC01	N/A
Professional Tool	Available	Available	Available	Available
Networking	LAN (RJ45) & Optional wireless LAN unit	LAN (RJ45) & Optional wireless LAN unit	LAN (RJ45) & Optional wireless LAN unit	LAN (RJ45) & Optional wireless LAN unit
Other features	Laser light source, interchangeable lens options including zero offset UST lens, powered zoom, focus & lens shift, lens memory, 4K enhancement, 360° installation, edge blending, curved screen projection, split screen, tiling, scaling, simple stacking, filterless structure, constant brightness mode, art-net support, external camera option, NFC feature with config tool app inclusion, fully sealed optical engine.			
Noise (dB) normal / eco	34 / 29	38 / 34	45 / 37	49 / 41
Weight (kg) excluding lens	23.7	24.2	24.4	63.8
Dimensions WxDxH (mm)	586 x 492 x 218	586 x 492 x 218	586 x 492 x 218	790 x 710 x 299
Power consumption (W) (normal / eco)	864 / 633	1083 / 773	1301 / 899	2,325 / 1,511
Power consumption (W) standby / comm. Off	2 / 0.4	2 / 0.4	2 / 0.4	2.5 / 0.5
Projector warranty	Please refer to Epson website for warranty details			

## Epson professional software solutions

### Epson Projector Professional Tool

You can quickly and easily create perfectly aligned images with the Epson Projector Professional Tool. Our free, downloadable software utility improves the speed of set-up for multi-projector installations. It also gives you access to more advanced techniques straight out of the box.

#### Compatible for

- Edge blending
- Geometry correction
- Blanking
- Lens control
- Tiling
- Image correction
- Scaling
- Monitoring

[DOWNLOAD ON WINDOWS](#)[DOWNLOAD ON MAC](#)

### Epson Projector Management Software

Epson Projector Management Software enables you to remotely monitor and control multiple projectors over a local area network from a single computer. You can remotely power projectors on or off, switch input sources and check the lamp operating times. You can even send email alerts in order to update users about a projector's status, and prevent any possible problems disrupting your presentation. Roll out firmware updates to all projectors over a single network and duplicate settings of a projector across the network.

#### Compatible for

- Message broadcasting
- Firmware update from Cloud
- Auto multiple NIC search
- Status monitoring
- Email notification
- Encryption
- Control
- Error log

[DOWNLOAD ON WINDOWS](#)

### Epson Configuration App

Shorten kitting time with the Epson Projector Config Tool App & NFC function. Customisation of settings of the PU series projectors can be done in batches of up to 100 units. Specifically designed for rental and staging, SI and IT managers, the projector's inventory data can be easily checked and collected instantaneously by simply tapping with a mobile phone without having to turn on the projector. The Epson Configuration App is only compatible with Epson projectors with the built-in NFC feature.

#### Compatible for

- Tap and connect without turning on
- Impact/export information
- Password protection
- Share error code
- Kitting
- Batch upload
- Error log

[Download on the App Store](#)[GET IT ON Google play](#)[DOWNLOAD ON ANDROID APP STORE](#)



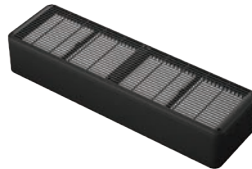
## Epson projector options



### External Camera ELPEC01

The ELPEC01 automatically calibrates images with the Epson Professional Tool software.

Attach an ELPEC01 external camera to the EB-PU Series or ELPLX02/01 UST lens to enable powerful installation capabilities.



### External Air Filter ELPAF63

Attaching the ELPAF63 gives an equivalent protection to sealing an optical engine structure, so that the projector's performance is not compromised in an environment that contains a high degree of particulates.

External high capacity air filter ELPAF63 is available for EB-PU1007W, PU1008W, PU1008B, PU2010W, PU2010B.



### Ceiling Mount / Extension

Fit your projector perfectly to your venue and ensure flexibility, safety and security with our tailor-made ceiling mounts.

(ELPMB22, and light weight ceiling mount ELPMB67 and extension pole ELPFP15)



### Carry Handle

Attach a genuine Epson carry handle to add convenience to large venue installation.

Carry handle (ELPMB56) for EB-L30000U is available.



### Wireless LAN Adapter ELPAP11

Make fast, secure wireless connections with Epson projectors.

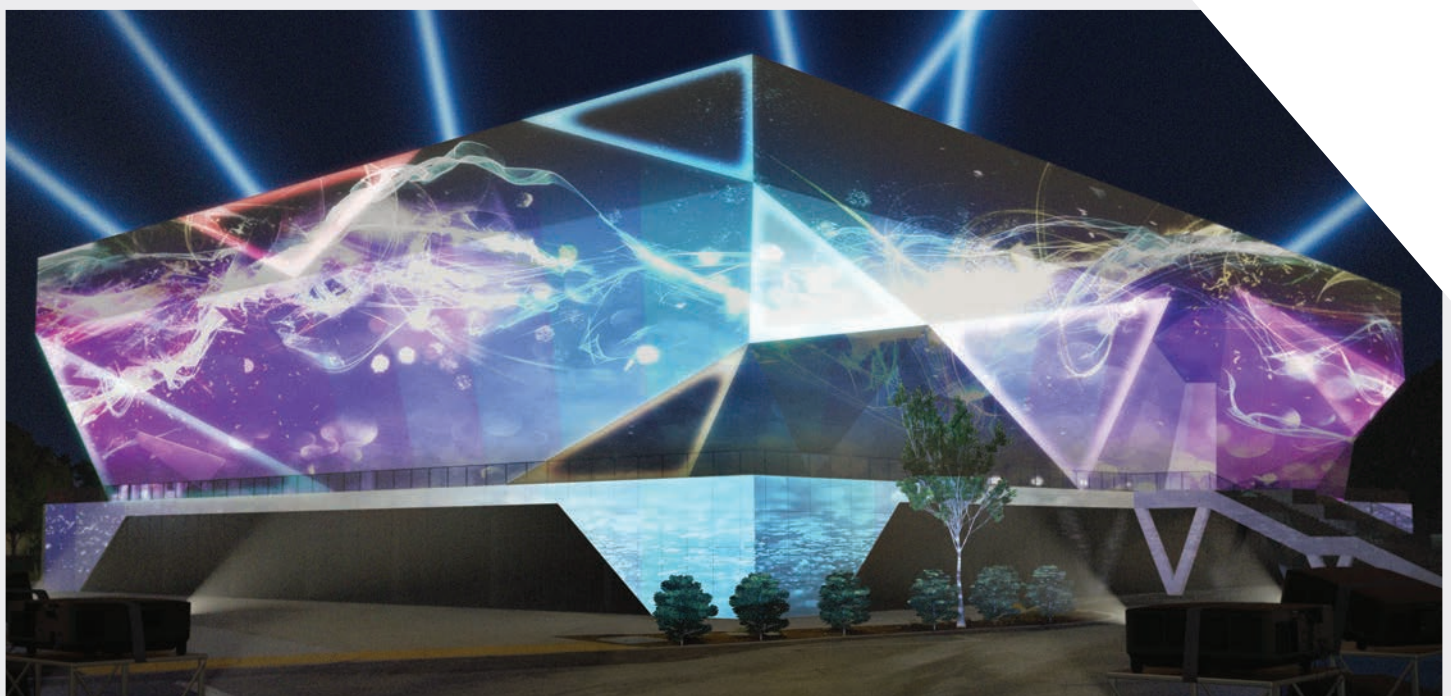


### HDBaseT Transmitter / Control Pad ELPHD02

Simplify cabling with the ELPHD02 by connecting up to 100m CAT-5/6 cables to the wall control pad.

The ELPHD02 is powered by HDBaseT Transmission; Epson's installation projector models that have a HDBaseT input are fully compatible.

With the ELPHD02, a remote controller is not needed to power on/off or to select source input, simply use buttons on the wall control pad.



## Digital Signage projection solution

### Display lasting visual impressions

Transform your retail space into a memorable destination.

Think big like a video wall to generate buzz or a small like dynamic shelf talkers or product call-outs.

With our expansive line-up of products, the possibilities are endless. You can count on extraordinary image quality with Epson laser projectors, as well as industry-leading service and support.

### Project onto any surface

Map images onto walls, products or entire buildings and advertise discretely on any surface by blending multiple projectors seamlessly together.



### Meet the range

Our innovative LightScene EV-110 series combines stunning illumination with HD projection, ideal for retail, hospitality and entertainment environments. With it you can create eye-catching imagery in unusual shapes and sizes for fabulous visual experiences that are a world away from the restrictions of a flat panel.

The short-throw EB-L200SW and EB-805F are an alternative to a flat screen that can project large images from very short distances, so they are ideal for narrow spaces such as shop windows and corridors.

For larger settings make an even bigger impact with the EB-L700 series and EB-PU series and maximise your promotional space by scaling up images without compromising quality or colour.



EV-110



EV-115



EB-805F



EB-L200SW








EB-L700 series



EB-PU series



## Digital Signage Products

Model	EV-110/115	EB-L200SW	EB-805F	EB-L700 Series	EB-PU series
					
Resolution	WXGA	WXGA	Full HD*	WUXGA	WUXGA
Native aspect	16:10	16:10	16:9	16:10	16:10
Light Source	Laser	Laser	Laser	Laser	Laser
Colour Light Output (lumens) normal/eco	2,200 / 1,100	3,800 / 2,660	5,000 / 3,500	5,000 - 7,000 / 4,200 - 4,900	7,000 - 10,000 / 4,900 - 7,000
Contrast ratio	2,500,000:1	2,500,000:1	2,500,000:1	2,500,000:1	2,500,000:1
Laser life (hours) normal/eco	20,000 / 30,000	20,000 / 30,000	20,000 / 30,000	20,000 / 30,000	20,000 / 30,000
Throw ratio in native aspect (standard lens)	1.38 - 2.19	0.48 - 0.65	0.27 - 0.36	1.35 - 2.20 / 0.8 - 1.07 (ST)	1.57 - 2.56 (10klm) / 1.44 - 2.32
Image size (diagonal, inches)	30 - 150	53 - 120	65 - 130 @ 16:9 / 61 - 120 @ 16:6	50 - 500 / 50 - 200 (ST)	60 - 1,000 (10klm) / 50 - 1,000
Zoom (standard lens)	Digital x 1.4 Optical x 1.58	Digital x 1.35	Digital x 1.35	Optical x 1.6	Optical x 1.6
Vertical keystone Horizontal keystone (standard lens)	Manual: ±45° Manual: ±40°	Manual: ±15° Manual: ±15°	Manual: ±3° Manual: ±3°	Manual: ±30° Manual: ±30°	Manual: ±45° Manual: ±30°
Lens shift (standard lens) vertical / horizontal	N/A	N/A	N/A	±50% ±20% (Manual)**	±60% ±18%, ±67% / ±30% (Powered)
Speaker output	N/A	16W	16W	10W	N/A
Connectivity	HDMI in x 1, SDHC (up to 32GB) in x 1, Audio out x 1, RJ45 x 1, USB 2.0 Type A x 1 (Power Supply, GPI control)	HDMI in x 2, HDMI out x 1, VGA in x 2, VGA out x 1, RCA (Yellow) in x 1, Audio in x 4, Audio out x 1, RS-232C, RJ45 x 1, USB 2.0 Type A x 1 (Optional Wireless Lan, Content Playback), USB 2.0 Type B (Service Only)	HDBaseT, HDMI in x 3, HDMI out x 1, VGA in x 2, VGA out x 1, RCA (Yellow) in x 1, Audio in x 3, Audio out x 1, Ethernet interface (100 Base-TX / 10 Base-T), RJ45 x 1, RS-232C, USB 2.0 Type A x 2 (Optional Wireless Lan, Content Playback), USB 2.0 Type B (Service Only)	HDBaseT, HDMI out x 1, HDMI in x 2, VGA in x 2, VGA out x 1, Audio out, Audio in x 2, Ethernet interface (100 Base-TX / 10 Base-T), RJ45 x 1, RS-232C, USB 2.0 Type A (Content playback, document camera), USB 2.0 Type B (Service Only)	HDBaseT, BNC in x 1***, BNC out x 1^, HDMI in x 1, DVI in x 1, VGA in x 1, Audio out x 1, Remote x 1, Ethernet interface (100 Base-TX / 10 Base-T), RS-232C, RJ45 x 1, USB 2.0 Type A (Optional Wireless Lan, Content playback), USB 2.0 Type B (Service Only)
Audio connectivity	Stereo mini out x 1	Stereo mini in x 2, Stereo mini out x 1, RCA in x 1, Mic in x 1	Stereo mini in x 3, Stereo mini out x 1	Stereo mini in x 2, Stereo mini out x 1	Stereo mini out x 1
Networking	LAN (RJ45) & built-in wireless LAN unit	LAN (RJ45) & built-in wireless LAN unit	LAN (RJ45) & optional wireless LAN unit	LAN (RJ45) & built-in wireless LAN unit**	LAN (RJ45) & optional wireless LAN unit
Content management/Content playback	SD card / RJ45 Lan	USB / RJ45 Lan	USB / RJ45 Lan	USB / RJ45 Lan	USB / RJ45 Lan
360 Degrees Projection	Yes	Yes	Yes	Yes	Yes
Noise (dB) normal/eco	34/22	36/26	36/27	38/27 - 31/23	37/30 - 34/30
Weight (kg)	6.9 (lens included)	4.5 (lens included)	9.4 (lens included)	7.7 - 8.4 (lens included)	16.4 - 17 (lens excluded)
Dimensions W x D x H (mm)	Projection unit: 175 x 265 Power supply unit: W459 x 110 x H65 (with Cable Cover)	325 x 337 x 90	458 x 375 x 209.5	440 x 339 x 136	545 x 436 x 189
Power consumption (w) normal	149	254	366	293 - 345	366 - 452
Power consumption (w) standby/comm.off	2.0 / 0.5	2.0 / 0.5	2.0 / 0.5	2.0 / 0.5	2.0 / 0.5
Projection warranty	Please refer to Epson website for warranty details				

\* Pixel shifting technology achieves full HD resolution on screen

\*\* Lens shift function, HDMI out are not available and wireless connectivity is optional on EB-L520U

\*\*\* BNC in/out connectivity doesn't exist on EB-PU1007/8 models

## Epson signage software solutions



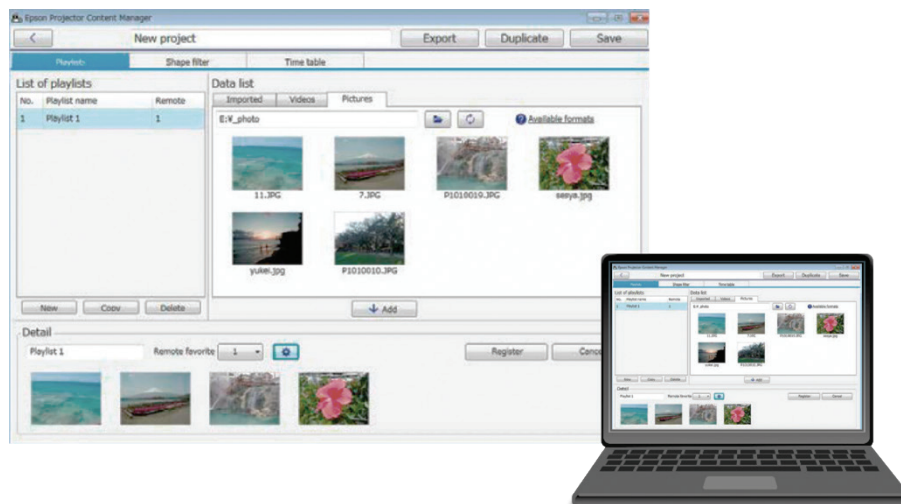
### Epson Content Management Software

With Epson Content Management software, you can easily create playlists for signage content from a PC or a laptop. The ability to set schedules and register the shape filter settings gives you advanced control over your content.

#### Key features of the software include:

- Creating playlists
- Adding visual effects
- Setting up remote shortcuts
- Applying custom filters
- Scheduling playlists

DOWNLOAD ON WINDOWS



### Epson Creative Projection App

With the Epson Creative Projection app, you can create original, dazzling content to enliven rooms, product displays, and spaces around you, anytime and anywhere.

Available on iOS devices, such as iPhone and iPad, content can be previewed while projecting and editing content at the same time. With extensive preloaded templates, freely arrange and combine materials in the app any way you like. From simply uploading photos and movies from a mobile device to making animated visual effects, instantly make your display content come to life without requiring a PC.





## Optional lens specifications

Customise your installation projector with Epson's optional powered lenses. Available in a range of throw ratios to suit different venues, screen sizes and projector distances, create the best possible image quality and match your budget.

### EB-L30000U

Lens type	Ultra short throw	Rear projection	Short throw	Wide zoom	Mid throw	Mid throw	Mid throw	Long throw	Long throw
Reference	ELPLX03	ELPLR05	ELPLU05	ELPLW07	ELPLM12	ELPLM13	ELPLM14	ELPLL09	ELPLL10
Lens option									
Order number	V12H004X03	V12H004R05	V12H004U05	V12H004W07	V12H004M0C	V12H004M0D	V12H004M0E	V12H004L09	V12H004L0A
Zoom ratio	N/A	N/A	1 – 1.21	1 – 1.37	1 – 1.35	1 – 1.52	1 – 1.50	1 – 1.50	1 – 1.50
Throw ratio	0.35 – 1	0.63 : 1	0.90 – 1.09 : 1	1.29 – 1.76 : 1	1.74 – 2.35 : 1	2.28 – 3.46 : 1	3.41 – 5.11 : 1	4.79 – 7.20 : 1	6.73 – 10.45 : 1
Screen size range (inches)	100 – 1,000	100 – 1,000	100 – 1,000	100 – 1,000	100 – 1,000	100 – 1,000	100 – 1,000	100 – 1,000	100 – 1,000
Lens shift	V: ±15% H: ±14%	V: ±15% H: ±5%	V: ±55% H: ±25%	V: ±65% H: ±30%	V: ±65% H: ±30%	V: ±65% H: ±30%	V: ±65% H: ±30%	V: ±55% H: ±25%	V: ±55% H: ±25%

### EB-PU1000 Series

Lens type	Ultra short throw	Short throw	Short throw	Wide zoom	Mid throw	Wide zoom	Mid throw	Mid throw	Mid throw	Mid Throw	Long throw
Reference	ELPLX01S	ELPLU03S	ELPLU04	ELPLW05	ELPLW06	ELPLW08	ELPLM08	ELPLM15	ELPLM10	ELPLM11	ELPLL08
Lens option											
Order number	V12H004X0A	V12H004UA3	V12H004U04	V12H004W05	V12H004W06	V12H004W08	V12H004M08	V12H004M0F	V12H004M0A	V12H004M0B	V12H004L08
Throw ratio	0.35 – 1	0.65 – 0.78:1	0.87 – 1.05:1	1.04 – 1.46:1	1.62 – 2.22:1	1.18 – 1.66:1	1.42 – 2.28:1	3.32 – 5.06:1	6.73 – 10.45 : 1	4.85 – 7.38:1	7.21 – 10.11
Screen size range (inches)	100 – 1,000	80 – 1,000	50 – 1000	50 – 1000	50 – 1000	50 – 1000	80 – 1000	50 – 1000	100 – 1,000	50 – 1000	50 – 1000
Lens shift	V: ±17% H: ±10%	V: ±67% H: ±30%	V: ±67% H: ±30%	V: ±67% H: ±30%	V: ±65% H: ±30%	V: ±67% H: ±30%	V: ±67% H: ±30%	V: ±67% H: ±30%	V: ±67% H: ±30%	V: ±67% H: ±30%	V: ±67% H: ±30%

### EB-PU22 series

Lens type	Ultra short throw	Short throw	Short throw	Wide zoom	Wide zoom	Mid throw	Mid throw	Mid throw	Long throw
Reference	ELPLX02S	ELPLU03S	ELPLU04	ELPLW06	ELPLW08	ELPLM15	ELPLM10	ELPLM11	ELPLL08
Lens option									
Order number	V12H004X0B	V12H004UA3	V12H004U04	V12H004W06	V12H004W08	V12H004M0F	V12H004M0A	V12H004M0B	V12H004L08
Throw ratio	0.35 – 1	0.48 – 0.57:1	0.64 – 0.77:1	1.19 – 1.62:1	0.86 – 1.21:1	1.57 – 2.56:1	2.42 – 3.71:1	3.54 – 5.41:1	5.27 – 7.41:1
Screen size range (inches)	100 – 1,000	80 – 1,000	60 – 1000	60 – 1000	60 – 1000	60 – 1000	60 – 1000	60 – 1000	60 – 1000
Lens shift	V: ±25% H: ±15%	V: ±24% H: ±10%	V: ±60% H: ±18%	V: ±60% H: ±18%	V: ±60% H: ±18%	V: ±60% H: ±18%	V: ±60% H: ±18%	V: ±60% H: ±18%	V: ±60% H: ±18%

## Lens Compatibility Chart

Lens type	Ultra short throw	Ultra short throw	Short throw	Short throw	Wide throw	Wide throw	Wide throw	Mid throw	Mid throw	Mid throw	Mid throw	Long throw
Reference	ELPLX01S	ELPLX02S	ELPLU03S	ELPLU04	ELPLW05	ELPLW06	ELPLW08	ELPLM08	ELPLM15	ELPLM10	ELPLM11	ELPLL08
Order number	V12H004X0A	V12H004X0B	V12H004UA3	V12H004U04	V12H004W05	V12H004W06	V12H004W08	V12H004M08	V12H004M0F	V12H004M0A	V12H004M0B	V12H004L08
EB-PU1007W	√	-	√	√	√	√	√	√	√	√	√	√
EB-PU1007B	√	-	√	√	√	√	√	√	√	√	√	√
EB-PU2010W	√	-	√	√	√	√	√	√	√	√	√	√
EB-PU1008B	√	-	√	√	√	√	√	-	√	√	√	√
EB-PU2010W	-	√	√	√	√	√	√	-	√	√	√	√
EB-PU2010B	-	√	√	√	√	√	√	-	√	√	√	√
EB-PU2213B	-	√	√	√	-	√	√	-	√	√	√	√
EB-PU2216B	-	√	√	√	-	√	√	-	√	√	√	√
EB-PU2220B	-	√	√	√	-	√	√	-	√	√	√	√





## The Best Projectors Deserve The Best Care.

At Epson, we're committed to excellence. We pride ourselves on giving you projectors that will deliver unsurpassed image quality and colour precision and we want that standard to continue.

We realise how important projector technology can be for your operations, and that's why we offer a range of great service packs to ensure that things continue running smoothly.

These service packs give you extra benefits over and above your standard warranty. And perhaps even more importantly, they provide real reassurance.

### Why you should go with Epson CoverPlus

#### Cost Control

Avoid unexpected costs and save money over the life of your projector. Often, a single service can cost more than an Epson CoverPlus service pack. Plus, you won't need to invest in inventory spares.

#### Reduce Downtime

Get your projector back up and running in no time with our fast, prioritised on-site service & support.

#### More Value

An Epson service pack means that your projector will be properly serviced, extending the product's life and making sure you get the best value. You'll also be able to better plan the timing of replacement products.

#### Epson Experts

Enjoy the satisfaction and reassurance of having your product serviced by skilled, Epson-trained technicians.

#### Match Your Leasing Term

Most high-end projector equipment is financed over a 3 to 5 year term. Epson CoverPlus ensures that the equipment is fully covered during that period.

#### Flexible Support

Our support is available for home-based workers and customers in remote locations.

#### Wide Range Of Support Options

Choose the Epson CoverPlus service pack that best suits your needs. We can even customise a service plan just for you.

### Compare the benefits of Epson CoverPlus:

	Standard Warranty	Epson Cover
Coverage Period	Up to 4 Years	Up to 5 Years
Coverage Type	Return to base	Return to base; Rapid exchange or On-site
Parts	Yes	Yes
Labour	Yes	Yes
Phone response (within business hours)	24-48 hrs of Epson being notified	8 hrs of Epson being notified
Priority 1st Queue	No	Yes
Dedicated unlimited telephone support	Yes	Yes
Dedicated unlimited email support	Yes	Yes



## Better Products for a Better Future™

<sup>1</sup>The EB-L1505U is the first and only 12,000lm WUXGA 3LCD laser projector on the market as of December 2015.

<sup>2</sup>Survey conducted by Futuresource Consulting Limited for the period from 2001 to 2021.

<sup>3</sup>Colour brightness (colour light output) in brightest mode, measured by a third-party lab in accordance with IDMS 15.4. Colour brightness will vary depending on usage conditions. Top-selling Epson 3LCD projectors versus top-selling 1-chip DLP projectors based on NPD sales data for October 2019 through September 2020. For more information please visit [www.epson.com.au/CLO](http://www.epson.com.au/CLO) or [www.epson.co.nz/CLO](http://www.epson.co.nz/CLO)

<sup>4</sup>Not available on all products, please check specification on pages 10–11.

<sup>5</sup>EB-L12000Q is the world's first 12,000 lumen native 4K 3LCD laser projector.

<sup>6</sup>Brightest 3LCD projector as of September 2016. Some short-throw and ultra throw lenses will not produce 30,000lm.

EPSON AUSTRALIA  
Level 1, 3 Talavera Road  
Macquarie Park NSW 2113  
Tel: (02) 8899 3666  
[www.epson.com.au](http://www.epson.com.au)  
ABN 91 002 625 783

EPSON NEW ZEALAND  
Level 2, 7-9 Fanshawe Street  
Auckland 1010  
Tel: (09) 366 6855  
[www.epson.co.nz](http://www.epson.co.nz)

Trademarks and registered trademarks are the property of Seiko Epson Corporation or their respective owners.

# EPSON