

2025



Contents



Photo & graphics 3-6



Technical & CAD 7-10



Fabric 11-14



Merchandise 15-18



Signage 19-22



Services and technology 23-27

For graphic, photo & fine art professionals 

Photo & graphics



for

design, proofing & packaging
premium photo & fine art

outstanding

professional photo imaging

image

commercial photo imaging

quality

Photo and fine art printers have long set the standard for colour and black and white image reproduction. Whether you are producing commercial photo prints, wedding albums, school photos or gallery-ready artwork, Epson has a solution.

The SureColour P-Series professional range is designed for people who need to produce premium photo and fine art prints on paper, board, canvas and / or film. They combine maximum print precision with an unparalleled colour gamut, high media flexibility and outstanding image stability.

The SureColour P-Series production and Surelab ranges are designed for businesses involved in commercial photo imaging. From photo albums to posters, point of sale material, wall art and more, these models deliver quality output efficiently and cost effectively.

Photo & graphics

SureColor P-Series photography and fine art printers deliver an outstanding level of print quality. These models have been designed for professionals seeking uncompromising image accuracy.

With broad media compatibility, superior colour gamut and the ability to accurately reproduce fine detail and gradation, this series sets the industry standard for photography and fine art imaging.



Professional photo imaging

Designed to transform your artistic vision into reality.

Whether you are creating prints for family and friends, competition entries, pre-production proofs, or sale to the public, Epson has a solution.

PrecisionCore printheads and UltraChrome ink deliver accurate colour, high brightness and an outstanding gamut.

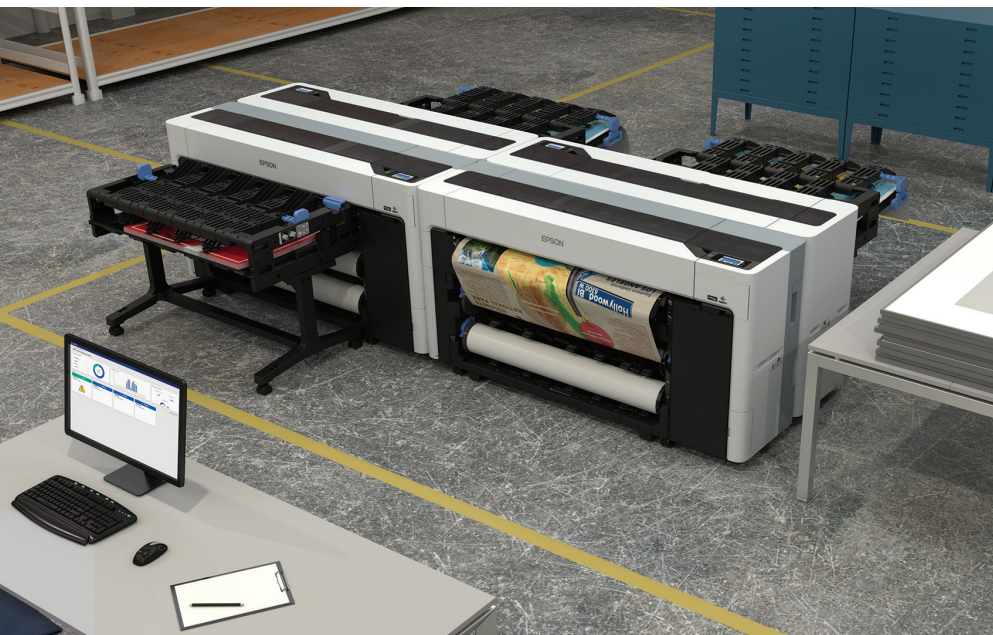
Premium photo & fine art

Epson sets the standard for gallery-quality prints with incredible image precision.

These solutions cater for print widths from 12 inches (A3+) to 64 inches on a wide range of media, including standard matte and gloss, specialised cotton, film, and even board stock.

True 12-colour ink sets, and Variable Dot Technology deliver superb image quality with ultra-fine gradation.





Commercial photo imaging

From retail photo printing to online and specialist production services, Epson offers a tailored solution.

Epson commercial printers support imaging down to 3.5 x 4" for business cards and up to B0 for custom canvas reproductions.

All models support panoramic prints and some even offer double-sided printing for photo books.

Design, proofing & packaging

Epson pioneered digital printing with a focus on consistent and accurate colour.

These printers are the ultimate choice for graphic designers, offering remarkable image quality with precise and predictable colour. Select models boast certification of a colour gamut covering an incredible 99% of the Pantone® range.



the SureColor P-Series photo & graphics family



SL-D1060



SC-P906



SC-P5360



SC-P6560D



SC-P8560DM



SC-P9560



SC-P20560

MODEL NAME	Installation	Print width	Speed	Colours	Ink packs (ml)	ECS PORT	Other features
SL-D1060	Desk	A4 / 8"	460 4x6" / hr	6	250	Integrated	Wifi & Ethernet support, cost-effective roll-based media, print single & double sided, optional duplex unit
SC-P706, P906		A3+ / 13" (P706) A2 / 17" (P906)	120s / A4	10	25 (P706) 50 (P906)	Compatible only with P906	Compact, Wi-Fi, sheet & roll media support (roll optional with P906)
SC-P5360		A2 / 17"	155s / A2		200	Integrated	Wide media compatibility with flexible production and a low print cost
SC-P7360, P9360	Floor	A1 / 24" (P7360) B0 / 44" (P9360)	90s / A1		350 / 700		Wide media compatibility, optional Spectroproofer and Postscript
SC-P7560, P9560		A1 / 24" (P7560) B0 / 44"	96s / A1	12	Compatible	Wide media compatability, optional Spectroproofer, 99% Pantone coverage	
SC-P6560D, P8560D, P8560DM, P8560DL		A1 / 24" (P6560D) B0 / 44" (P8560D / DM / DL)	65s / A1 152s / B0	6	350 / 700 1600 (P8560DL)	Integrated	Compact with low profile, dual roll / ATU, postscript, optional SSD. Large format MFP (P8560DM)
SC-P20560		64"	25 m² / hr	12	1600		Wide media compatibility, supplied with RIP software, optional ATU & postscript, 99% Pantone coverage

Print width details are stated as maximums. Speed figures are maximum rates with actual performance likely to vary depending on output quality requirements, print settings, processing, networking, finishing & other factors.



Wide media support

Epson photo printers offer outstanding media flexibility, handling sheets and rolls from standard photo to ultra-thin fine art, super-thick gallery-quality materials, and even board stock.



Comprehensive support

Epson Cloud Solution PORT is a free service that provides management and job costing tools while enabling advanced diagnostics and support.



Optimised ink packs

Choose from a variety of ink pack sizes to suit different production needs.

Larger packs boost productivity and lower running costs.



Low running costs

Comprehensive warranties help reduce total cost of ownership and can be extended with optional CoverPlus service packages.



High print durability

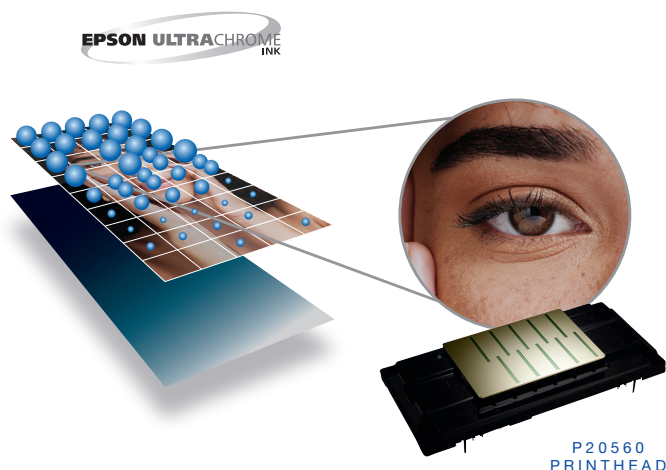
The award-winning UltraChrome all-pigment ink delivers exceptional print durability.



OUTSTANDING IMAGE QUALITY

Featuring Precision Dot imaging technology for extreme accuracy, these printers use UltraChrome ink for predictable results and high image stability across various media.

Self-monitoring PrecisionCore Micro Piezo printheads with Variable Sized Droplet Technology (VSDT) ensure precise, consistent output with accurately sized dots.



Micro Piezo printheads eject ink through micro-fine nozzles, fabricated with astounding accuracy.

Ink droplets are formed precisely and consistently in exact volumes using VSDT for maximum colour gamut with fine gradation and detail.



Performance is constantly monitored to ensure consistent output with minimal waste.

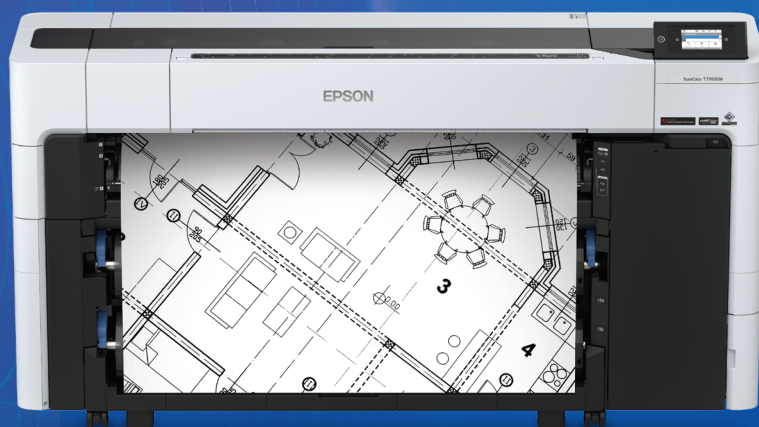
Micro Piezo printheads operate without heat. Ink temperatures remain stable for predictable and consistent colour from the beginning to the end of each job.

Printheads consume less power and are significantly less stressed than thermal-based printheads, enabling consistent and reliable operation day after day, week after week and year after year.

For business, education and retail



Technical & CAD



high

construction, engineering & design

brightness &

posters & point of sale

colour

mining, mapping & emergency

density

planning, education & presentation

Epson's SureColor T-Series technical printers are designed to produce drawings, plans, posters, maps, teaching materials, presentations and more. Developed for business, education and retail applications, they are user-friendly and energy efficient.

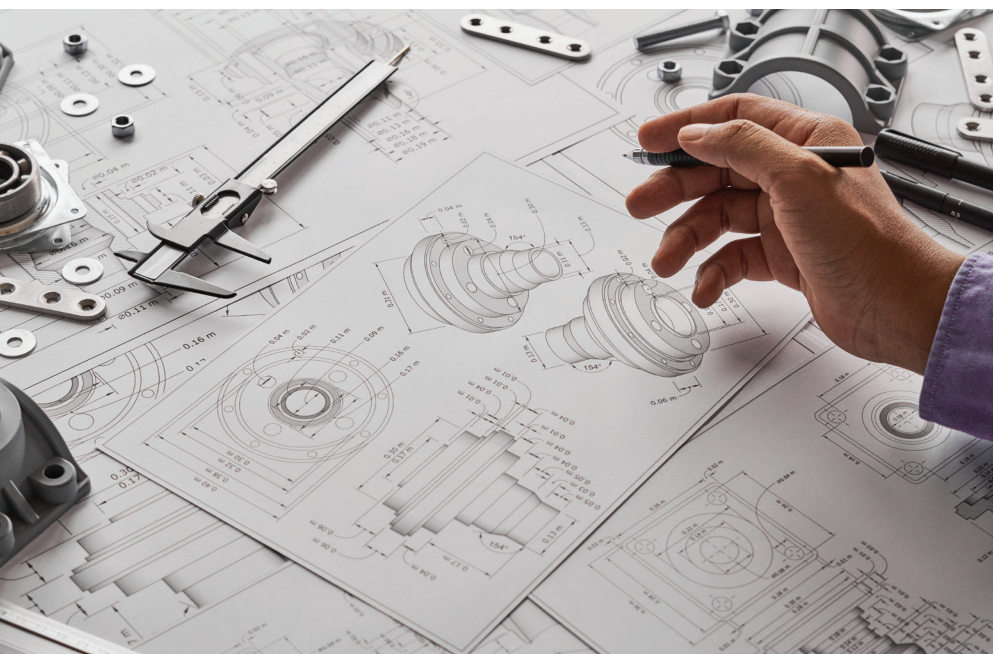
These printers deliver prints quickly and efficiently with ultra-fine lines, solid fills, high colour density and brightness. Ink costs are economical, and prints dry almost instantly for moisture and abrasion resistance.

Many models integrate with Epson business printers for complete office solutions. Some models suit home and site-office use, while others provide high-speed operation with HDD / SSD, postscript image processing and dual roll / auto take-up capabilities.

Technical & CAD

Epson offers a range of technical models to suit different applications, operational environments, and production requirements. All feature precise image processing and low power consumption.

Whether you are a builder, engineer, designer, architect, teacher or small business owner we have a solution for you. Produce high-quality prints up to A0 and beyond, quickly, efficiently and at minimal cost.



Construction, engineering & design (CAD)

Detail is everything when you are in design or construction.

Epson technical printers are engineered to deliver super-fine details in full colour, consistently.

The SureColor T-Series includes compact models for small businesses and site offices through to high-volume corporate models with multi-roll and document tracking capabilities for design teams.

Geographic information system (GIS)

Sometimes even the largest screen simply won't do. There is nothing quite like a large print to capture all the detail you need.

SureColor T-Series printers are fast and flexible. They are built tough and use all-pigment ink for prints that are resistant to abrasion and moisture, perfect for mining, mapping and emergency service applications.





Planning, education & presentation

Nothing captures attention like a large print.

Prints command presence and are invaluable for learning and team collaboration.

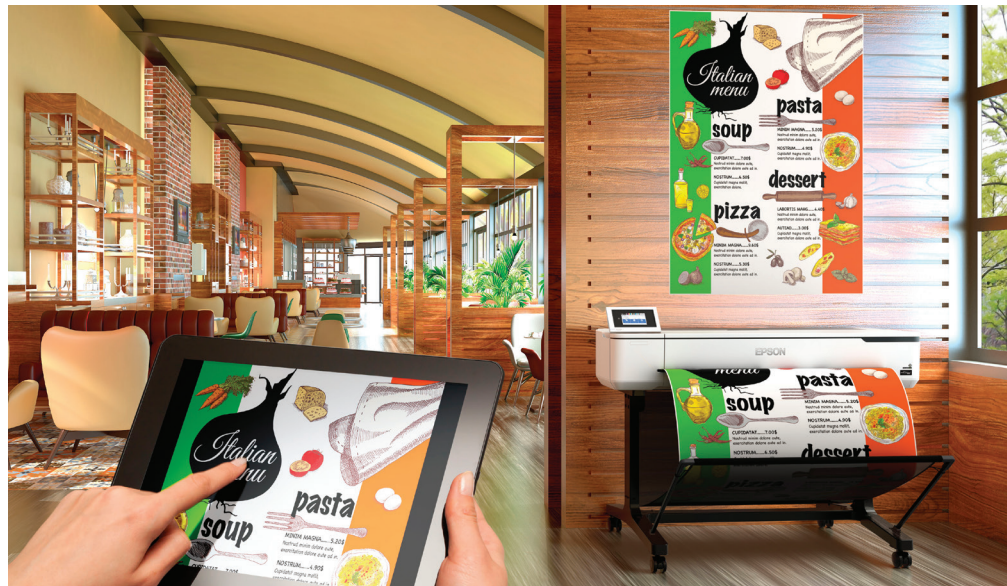
Some Epson T-Series printers come with integrated scanners, while others can be connected to external scanners and office printers for image upsizing. They are easy to use and economical to operate.

Posters & point of sale (POS)

Digital screens are expensive to install and maintain.

Produce eye-catching display materials quickly, efficiently and at a low cost.

SureColor T-Series models output on a wide range of media, and printers across multiple locations can be configured to share files.



the SureColor T-Series technical & CAD family



SC-T3160



SC-T5465



SC-T3760D



SC-T5760D



SC-T7760D

MODEL NAME	Installation	Print width	Speed	Colours	Ink packs (ml)	ECS PORT	Other features
SC-T3160, T3160M	Desk/Floor	A1 / 24"	34s / A1 31s / A1	4	26 / 50 / 80	Compatible	Extremely compact, sheet & roll support, page hold on exit. Large format MFP (T3160M & T5160M)
SC-T5160, T5160M		A0 / 36"					
SC-T3465	Floor	A1 / 24"	25s / A1		110 / 350 700 (T3465 & T5465 only)		Durable & reliable with reduced running costs. Large format MFP (T5460M)
SC-T5465, T5460M		A0 / 36"	22s / A1				
SC-T3760D		A1 / 24"	20s / A1	6	350 / 700 1600 (T7760DL only)	Integrated	Compact with low profile, dual roll / ATU, postscript, optional SSD & NFC. Large format print / copy / scan MFP (T5760DM & T7760DM)
SC-T5760D, T5760DM		A0 / 36"	28s / A0				
SC-T7760D, T7760DM, T7760DL		B0 / 44"					

Print width details are stated as maximums. Speed figures are maximums with actual performance varying depending on output quality requirements, print settings, processing, networking & other factors.



Flexible media handling

Epson technical printers offer exceptional media flexibility, supporting a wide range of roll stock thicknesses.

Single sheets can be fed manually, while some models support multi-page sheets and others support dual rolls and / or board.



High image quality

Advanced all-pigment ink guarantees vibrant, high-fidelity, eye-catching prints that are resistant to abrasion and moisture.



Optimised ink packs

Choose from various ink pack sizes to suit your needs.

Larger packs last longer and lower running costs.



Low cost of ownership

Enjoy the benefits of low power consumption and printheads that don't require regular replacement.

Comprehensive warranties include printheads and cover can be extended with Epson's industry leading CoverPlus program, up to five years. (Five-year cover not available on T3160, T3160M, T5160, T5160M.)



Comprehensive support

Epson Cloud Solution PORT is a free service that provides management, reporting and costing tools while enabling advanced diagnostics and support.



OUTSTANDING FLEXIBILITY

SureColor T-Series printers are designed as reliable workhorses for various applications.

All models boast enhanced dust and moisture protection, while high-speed models come with advanced security, dual roll support, postscript capabilities and integrated / optional SSDs – included on T5760M & T7760DM.

DUAL ROLL
SUPPORT

SECURITY

DUST & MOISTURE
PROTECTION

INTEGRATED /
OPTIONAL SSDs

POWERED BY
Adobe PDF Print Engine



They can also be configured to work with NFC readers for access control, usage monitoring and cost tracking.



Micro Piezo printheads eject ink through micro-fine nozzles, fabricated with astounding accuracy.

Ink droplets are formed precisely and consistently in exact volumes using VSDT for maximum colour gamut with fine gradation and detail.



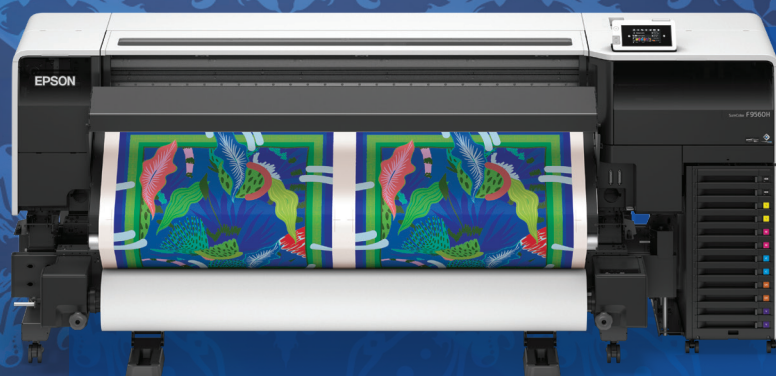
Performance is constantly monitored to ensure consistent output with minimal waste.

Micro Piezo printheads operate without heat. Ink temperatures remain stable for predictable and consistent colour from the beginning to the end of each job.

Printheads consume less power and are significantly less stressed than thermal-based printheads, enabling consistent and reliable operation day after day, week after week and year after year.



Fabric



rapid

decor, merchandise & art

and

clothing

fabric

cost-effective

soft signage

The popularity of digital fabric production has expanded rapidly because it is fast, efficient and consumes less resources than traditional analog methods. It is the perfect solution for businesses wanting to quickly deliver in-house short-to-medium production runs.

Digitally printed fabric is ideal for a range of clothing and textile applications, including sportswear, uniforms, décor and merchandise. It's also great for soft signage, which is more popular than ever, as well as made-to-measure furnishings such as curtains, upholstery and sunshades.

Dye sublimation and DTFilm production processes not only support imaging onto fabric, but also onto hard and semi-rigid surfaces, which enables production of a wide range of merchandise and accessories.

Fabric

With the SureColor F-Series, Epson offers a range of highly versatile fabric printers with specialised inks formulated for printing to natural, synthetic or blended materials. Be amazed how easy it is to produce custom garments, uniforms, street banners and more, even entire bolts of fabric. Choose from compact desktop machines for in-house or in-store use, 44" and 64" models for low-to-medium volume production, or large 76" printers with bulk ink systems and heavy roll support for high-volume work.



Soft signage

Analog fabric printing is labour and resource intensive.

It needs a lot of equipment, consumes a lot of water, requires specialised skills and often involves toxic chemicals.

In contrast, digital production provides a cleaner, simpler and more flexible process. Output is cost-effective, accurate and repeatable. Images are bright, colourful and eye-catching.

Fabric

Fabric production was once an expensive process suited to long production runs of fixed designs and sizes.

Digital fabric printing allows for rapid and cost-effective production of items ranging from small clothing tags to fabric bolts spanning widths from 17" to 76".

Production is scalable and repeatable so customers receive precisely what they need, when they need it, in just the required quantities.





Clothing

Retail success often hinges on continuous inventory refreshment while minimising overstock.

Customers seek products that capture individual perspectives and emotions specific to a location or particular moment in time.

Digital fabric supports scalable production, whether for a custom one-off item, a batch of team shirts, or a full seasonal collection.

Décor, merchandise & art

Digital imaging can be applied to a wide range of goods that aren't just fabric based.

With dye sublimation and DTFilm you can create a variety of compelling and unique products including custom phone cases, cups, sporting goods and wall art.

Production is quick and cost-effective, creating opportunities for designers, artists, event operators and more.



the SureColor fabric family



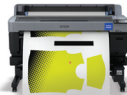
SC-F2260



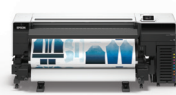
SC-F3000



SC-G6060



SC-F6460H



SC-F9560H



SC-11060H

MODEL NAME	Ink Type	Print width	Speed	Colours	Ink packs (ml)	ECS PORT	Other features
SC-F2260	DTG / DTFilm	A3+	17 ~ 28s 4c / item 89s 5c / item	4 + White	800	Integrated	Auto fine height adjustment, low running cost, low maintenance, flexible and quiet operation
SC-F3000			14s 4c / item 26s 5c / item		1500		Auto fine height adjustment, ultra low running costs, user replaceable printhead
SC-G6060	DTFilm	35"	16 m ² / hr 1 layer 8 m ² / hr 2 layer		1600		Roll loading with cut sheet & roll output, low maintenance and ultra-low running cost
SC-F6460 / 6460H	Dye sub	A0 / 44"	54 / 39 m ² / hr	Roll loading with cut sheet output, easy maintenance, optional ATU for roll output (included with F6460H)			
SC-F9560 / 9560H		64"	113 m ² / hr	Dual hot swap ink set, integrated heater & precision ATU, user-replaceable printhead			
F11060 / 11060H		76"	250 m ² / hr	3000 / 10000			Dual hot swap ink set, integrated heater & precision ATU, user-replaceable printhead, optional heavy roll feed and take up

Print width details are stated as maximums. Speed figures are maximums with actual performance varying depending on output quality requirements, print settings, processing, networking & other factors.



Dye sublimation (DS)

Ink is printed onto paper, which is then heat pressed onto fabric with synthetic content or goods treated with a polyester coating.

The heat sublimates the ink, transforming it into a gas that penetrates deeply into the surface to produce vibrant and long-lasting images.



Direct-to-garment (DTG)

As the name suggests, DTG prints directly onto garments and this process is particularly suited to fabrics with high natural fibre content.

Darker coloured materials usually require pre-treatment — some suppliers offer pre-treated garments — and a base layer of white is laid before any subsequent colour layers.



Direct-to-film (DTFilm)

Ink is printed onto film, after which a special powder is applied and heated to activate.

Images are transferred from the film to your item using a heat press, and printed films can be stored for later use.



Low total cost of ownership

All Epson printers use printheads that don't require regular replacement, which is why our comprehensive warranty coverage includes the printhead and can be extended with the industry leading CoverPlus program.

An additional (free) Epson Cloud Solution PORT service provides management, costing and reporting tools, as well as advanced diagnostic and support capabilities.

SIMPLE & FLEXIBLE PRODUCTION

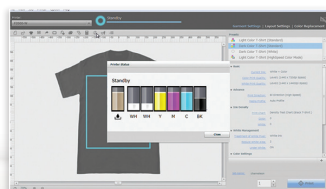
SureColor F-Series fabric printers are tailored to different applications and production needs.

The lineup includes compact desktop models, ideal for low-volume sheet-based tasks and in-store value-adding, through to large 76" roll-to-roll industrial solutions.

Installation is straightforward and operation is user-friendly with robust self-maintenance capabilities.



Garment Creator 2



DTG production process

requires a heat press or tunnel dryer to fix the print to the fabric.

Dark garments need to be pre-treated, and while manual treatment or purchase of pre-treated items will suffice for low-volume work, a dedicated pre-treat machine is recommended for higher volumes.



DTFilm and DTG are similar processes, often performed using the same equipment. DTFilm is considered more flexible, and does not require pre-treatment.

DTFilm requires a curing oven to fix the powder to the film, and a powder applicator is advisable for high-volume work.

Merchandise



Merchandise presents a growing opportunity for retail, event operators, print-for-pay providers and small businesses. Artists and designers can craft a wide range of unique items across various media. Business customers can foster team spirit with custom uniforms or event wear, and boost brand awareness through giveaways and promotional items.

Merchandise encompasses a wide array of products, ranging from fabric-based items like polo shirts and tote bags to solid items such as notepads, phone cases, drink bottles and golf balls. Adding images or logos to these items enhances their value, making them effective tools for advertising and promotional activities. Providing attendees with a branded drink bottle or pen after a meeting or at an event serves as an effective and long lasting reminder of your brand.

easy
in-store value adding
set-up
&
event merchandise
custom design &
in-house production
promotional goods
operation

Merchandise

Consumer trends and styles constantly evolve, and every customer has individual interests and needs. The key to driving purchases is exciting people with new and unique offerings. Merchandise is a growing opportunity with applications in marketing, retail and print-for-pay. Whether you're starting a small home business, wish to expand your print offerings, or offer in-store customisation, Epson has a merchandise solution for you.



In-store value adding

Customising products with personalised images and text enhances differentiation and adds value.

Say your customer wants a specific cartoon character on their phone case, their favourite car on a t-shirt, or a set of custom golf balls for a work party.

No problem. All these requests and more can be fulfilled quickly and cost efficiently.

Event merchandise

Events, shows and other group activities are enjoyable occasions where people often seek souvenirs to remember their experience.

With Epson you can create merchandise onsite, tailored to exact sizes and colours.

You can even incorporate custom images and text. Each customer can feel special and express themselves more fully.





Promotional goods

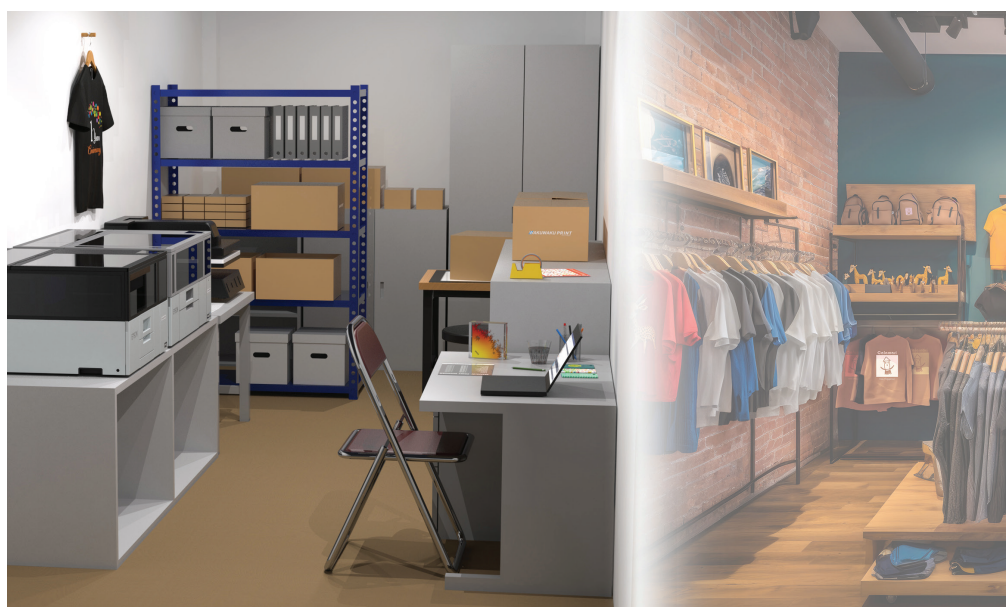
Advertising can be costly but custom merchandise is often an affordable way to enhance brand exposure and reach.

Production is fast, simple and cost-effective. Epson provides solutions for creating customised items including commemorative photos, coasters, pens, mugs, t-shirts and powerbanks.

Custom design & in-house production

Assembling a team takes time and effort. Equipping them with clothing and merchandise is an efficient way of helping them present as one.

With Epson printers, you can create custom teamwear and workwear. You can personalise your items with logos, ownership details and other information to enhance brand cohesion and help prevent loss or misuse.



the SureColor merchandise family



SL-D560



SC-V1060



SC-F1060



SC-F160



SC-F560

MODEL NAME	Ink type	Print size	Speed	Colours	Ink packs (ml)	ECS PORT	Other features
SL-D560	Dye	4 x 6"	250 / hr	6	70	Integrated	Wi-Fi, single & double-sided prints, works with common graphic & photo software
SC-V1060	UV		38s 4c / A4	4 + Varnish + White	140		Wi-Fi, print directly on items up to 70 mm thick or via film on other items, supplied with RIP software, print CMYK + white & / or varnish
SC-F1060	DTG / DTFilm	A4	55s 4c / A4 200s 5c / A4	4 + White	250		Wi-Fi, print on light & dark fabric directly or via film, full auto height adjustment
SC-F160	Dye sub		65s / A4	4	140	Compatible	Wi-Fi, uses bottle ink, works with common graphic & photo software
SC-F560 / F561		A1 / 24"	21 m ² / hr	4 (CMYK / CFyFpK)			Wi-Fi, uses bottle ink, supports sheet & roll media, supplied with RIP software, choice of standard & fluoro models

Print sizes, thicknesses and speeds are maximums with actual performance dependant on output quality, print settings, processing, networking & other factors.



Photo imaging

Epson commercial photo printers are quick and flexible. They use dye-based ink that dries almost instantly to produce bright and colourful images.

Prints can be made single and double-sided, with and without borders.

Customised text and icons can be added to enhance value and presentation.



Dye sublimation

Dye sub printers print on inexpensive paper. Images are then transferred (sublimated) onto fabric using a heat press.

It works well with high synthetic fibre content and can image onto hard surfaces like wood, metal, and non-heat-sensitive plastics that have been treated with a polyester spray.



UV

UV ink is highly flexible. It will adhere directly to a broad range of surfaces and products.

It can also be applied to film, which is then transferred onto items separately. This process is particularly suited to items with curved surfaces, such as drink bottles.



Direct-to-film / direct-to-garment

Epson DTG / DTFilm printers will print directly onto garments which contain 50% or more natural fibre content.

They can also print onto film, which is then coated with powder and heat pressed. These processes allow for imaging on a variety of natural and synthetic fabrics, as well as on merchandise.

MICRO MANUFACTURE MADE EASY

Epson merchandise printers are affordable and cost-effective to operate. All ship with ink and many include software and media.

All feature comprehensive warranties that can be extended with CoverPlus. Epson Cloud Solution PORT provides management and costing tools with enhanced support.



Epson CoverPlus

Fast. Reliable. Professional.

Epson Cloud Solution
PORT


Epson printers are renowned for exceptional image quality and reliability, thanks to their PrecisionCore printheads, UltraChrome ink and Precision Dot imaging technology.

They are designed for low power consumption and require minimal maintenance.



Comprehensive warranties cover all moving parts, including the printhead, and can be extended using CoverPlus up to 5 years depending on the model.

Epson Cloud Solution PORT is a free service that provides advanced costing, management and reporting tools, as well as enhanced diagnostic and support capabilities.

Produce signs, wallpaper, vehicle wraps and more 

Signage



SureColor signage printers are renowned for their wide colour gamut, high brightness, outstanding colour accuracy and cost-efficient operation. Ideal for creating signs, banners, screens, decals, window graphics, light-box films, vehicle wraps, merchandise and more. They render logos accurately, and ensure text is sharp and images are vivid.

Every customer has unique requirements, and there is a growing demand for versatile solutions across a range of applications. These machines deliver flexible production with predictable and consistent output, and they support a wide selection of media.

Running a successful business demands quality output produced affordably and reliably. SureColor signage printers are built tough with high levels of self maintenance and durable printheads that don't require regular replacement.

vehicle wraps

decals, décor & more

superior

durable signage

quality

shades & screen

&
consistency

Signage

Epson provides flatbed models for rigid media and roll-to-roll models for film, paper, and vinyl. All printers feature PrecisionCore printheads and UltraChrome ink for accurate high-resolution output with high brightness, high durability and an outstanding colour gamut. Designed for cost-effective operation, SureColor S, R and V-Series signage printers are energy efficient, require minimal maintenance and are highly reliable. All models are backed by comprehensive service that includes the printheads.



Durable signage

Modern signage spans various formats, from traditional outdoor billboards to window graphics, films, back-lit displays and more.

SureColor signage printers are engineered for use with a broad range of media types, including paper, vinyl, film and canvas.

Prints are both cost-effective to produce and durable. Images are vibrant with fine detail, and accurate and consistent colour.

Vehicle wraps

Vehicles serve as mobile advertising platforms. Quality presentation with bright and accurate logo colour is essential for effective brand promotion.

SureColor signage printers have built a reputation for predictable and consistent output with accurate colour and sizing. This makes application and alignment of multi-panel vehicle wraps a breeze.





Shades & screens

The modern signage market has expanded significantly.

Construction sites now serve as advertising platforms, while café seating areas present opportunities for brand placement.

SureColor signage printers can output on various media types, including canvas, mesh and scrim.

Decals, décor & more

Retail is more competitive than ever

Stores have to compete for the consumer dollar, not just against other bricks-n-mortar vendors but also a plethora of online merchants.

The ability to create fresh and enticing environments draws people in, encourages extended stays and increases consumption.



the SureColor signage family



SC-S7160



SC-S8160



SC-S9160



SC-R5000L



SC-V7000

MODEL NAME	Ink type	Print width / type	Speed	Colours	Ink packs (ml)	ECS PORT	Other features
SC-S7160	Eco-solvent	64" roll	38.7 m ² / hr	4	800	Integrated	Low print costs, low TCO, supplied with RIP software, integrated ATU
SC-S8160			TBC	6	Dual 800 / 1500		Low print costs, low TCO, supplied with RIP software, integrated ATU, hot swap, user-replaceable printhead
SC-S9160			63 m ² / hr	10 + White	800 / 1500		Low print costs, low TCO, supplied with RIP software, integrated ATU, wide colour gamut, user-replaceable printhead
SC-R5000 / 5000L	Resin	1.25 x 2.5 m flatbed	27 m ² / hr	6 + Optimiser	Single / dual 1500 with hot swap	Compatible	Accurate colour & print sizing, no-outgassing, supplied with RIP software, integrated ATU, user-replaceable printhead
SC-V7000	UV		23 m ² / hr	8 + Varnish + White	1000		Four zone bed with vacuum, media up to 80 mm thick, print with optional White and / or varnish



Eco solvent

Ink contains a solvent that etches images into the media surface.

The solvent evaporates (outgases), leaving the pigment embedded for a durable print. Ink and power consumption are low, resulting in a process that is cost-effective and delivers high brightness prints with an exceptional colour gamut.



Resin / latex

Ink is directly printed onto the media surface and cured with heat.

While there is some trade off in image brightness and colour compared to other signage ink technologies, the simpler formulation has advantages for printer operators, such as the ability to laminate prints instantly, without outgassing, which facilitates faster job turnaround.



UV

Ink is applied directly onto the media and cured using UV light. The process does not involve heat so it enables printing on diverse surfaces, including plastic, metal, timber and stone.

Additional white and / or varnish layers can be added to achieve various finishes and effects.



Low total cost of ownership

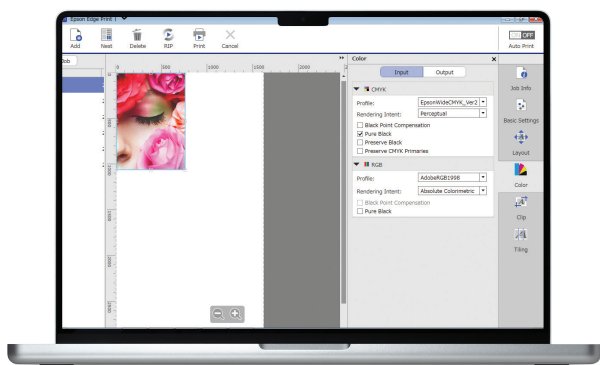
Epson printheads do not require regular replacement and that means lower production and labour costs.

They feature advanced self-maintenance and comprehensive warranties that can be extended with optional CoverPlus. The free Epson Cloud Solution PORT service provides management, costing and reporting tools, as well as advanced diagnostic and support capabilities.

SIGNAGE MADE SIMPLE

SureColor signage printers come with Epson Edge Print RIP software that is both user-friendly and harnesses the full capabilities of the machines.

Functionality and accuracy can be enhanced with the integration of low-cost colour management tools.



Edge Print PRO



Edge Colour



Cloud Solutions PORT

Epson provides the tools to facilitate seamless colour matching and profiling as well.



Epson signage printers

deliver industry-leading colour and image quality with PrecisionCore printheads, precision media feed systems and UltraChrome ink, ensuring exceptional accuracy for precise tiling and vehicle wraps.



Epson Edge Print software provides precise on-screen rendition for easy proofing, while downloadable EMX profiles support a variety of media types.

The Epson SD-10 hand-held spectrophotometer provides a convenient solution for spot colour matching.

An optional Auto Table for SD-10 further simplifies linearisation and custom profile creation, ensuring a true colour management workflow.



Services & technology

Epson printers are precision production tools designed for optimal performance. Our software, accessories, and services enable operators to harness the full capabilities of their equipment. We aim to empower owners to deliver exceptional output while maximising their return on investment.

Many of Epson's software and service offerings are available free to registered owners. Software can be easily downloaded from our website, while support is accessible online and through our customer service hotline.

Accessory products are included at no additional cost with many models and configurations. If they are not included, they can be purchased separately, and discounts may apply when ordered together with a printer.

For full details on inclusions and options, including terms and conditions of supply, please see the Epson Australia or New Zealand websites.

Services

Epson Cloud Solution PORT

PORT, a free service from Epson, provides tools to maximise return on investment, minimise resource consumption, and ensure optimal performance.

The service collects telemetry and operational data, secured by password access that is accessible by registered owners and parties they authorise.

The system monitors printer and consumable status, sending alerts when operator attention is needed. This allows staff to focus on other tasks like customer service, job preparation and packaging. With web and app interfaces (Android + iOS), operators can let equipment run autonomously.



The PORT interface

Reports offer insights on capacity, utilisation and consumable usage, with live data for quick review and historical data for detailed analysis. Ink and media pricing can be included to monitor costs and job profitability, while stored data enables efficient planning and costing of new jobs.

PORT ensures equipment operates optimally by monitoring maintenance and component age, allowing operators to plan for downtime and upgrades. Errors are tracked for easy analysis.

In the unlikely event that a printer fails, Epson technicians can access it remotely for diagnosis. If needed, an engineer will be dispatched with the appropriate parts, or parts can be sent directly for user self-repair on supported models.

Comprehensive service

Maintenance and repair can be a significant portion of large format printer running costs, including parts, labour and lost productivity.

Key components such as printheads can be expensive to replace, not only in parts and labour costs, but with lost productivity and time spent on recalibration.

Epson printers are designed to provide reliable and durable operation with a high degree of self-maintenance.

Unlike those of many other manufacturers, Epson printheads don't require regular replacement. If one does fail, replacement is covered under warranty.

Comprehensive service cover can be extended to 3, 5, or even 7 years with optional CoverPlus, depending on the model. Purchasing CoverPlus together with a printer can represent significant savings and costs can often be incorporated into leasing packages to manage fixed running costs and reduce total cost of ownership (TCO).

Epson CoverPlus

Fast. Reliable. Professional.

Visit one of our state-of-the-art experience centres in Australia or New Zealand to see any Epson product in action and 'try before you buy'.

Simply register your interest via our website and one of our friendly staff will be in touch.



Software and options



SD-10 & Auto table

Whether printing photos, graphics, or corporate logos, accurate colour reproduction is crucial.

Traditionally, colour management has been complex and time-consuming. The SD-10 is a compact, high-precision spectrophotometer that simplifies this process.

It stores figures for precise matching in print software. Portable and small enough to fit in a pocket, it has a lithium-ion battery for use with customers, suppliers, designers, or on the production floor, delivering consistent and accurate readings.

The optional Auto Table extends the functionality of the SD-10. Paired with Edge Color Lite software, Edge Print, and Cloud Solution PORT, it enables precise colour set matching, media profiling, printer linearisation and consistent output across multiple machines.

The SD-10 determines exact colours, allowing you to scan multiple patches and compare them against known standards like Pantone®.

SpectroProofer

Paired with compatible RIP software, the Epson SpectroProofer ensures precise output for designers, photographers and artists that reflects their original vision.

Print providers can produce contract proofs, colour certification labels and production control materials with confidence.

The SpectroProofer delivers extremely accurate measurements conforming to ISO and Fogra standards. It enables media calibration and output verification, ensuring artwork transitions from file to print with precision. With compatible software, the process operates automatically to maintain colour consistency.

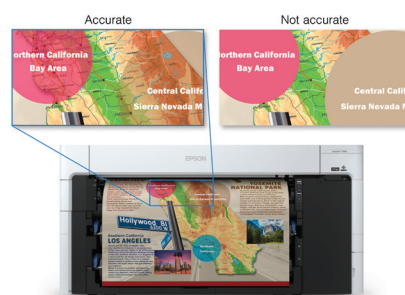


The Epson SpectroProofer is a high-performance in-line spectrophotometer for selected SureColor P-Series printers.

Postscript

Postscript is widely used for posters, signage, POS and CAD applications.

While most large format printers use software-based Postscript, Epson's solution is hardware-based.



High-speed firmware and custom processors enable rapid rendering and accurate layering.

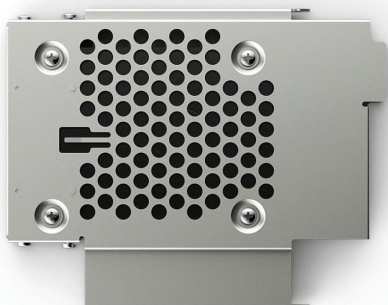
Printing via drag-and-drop, eliminating the need to open application software.

Auto take-up

Auto take-up units (ATUs) boost productivity and workflow flexibility by enabling efficient roll-to-roll production with offline cutting and finishing. Ideal for signage, poster, photography and fabric applications, they support extended prints and long continuous runs.

Many Epson printers include an ATU and some offer it as an option. Some dual-roll models can configure one roll as an ATU.

Epson ATUs are designed to maintain consistent tension and parallelism for seamless offline cutting, finishing, and lamination.



HDD / SSD

Adding a hard disk drive (HDD) or solid state drive (SSD) to an Epson printer extends its functionality and enhances productivity, especially in large workgroup environments and multi-site installations.

Large files can be transmitted to the printer in a single transfer, reducing network traffic. This streamlines image processing and enables reprints directly from the control panel or operator's desktop.

In networked environments, files can be shared, enabling a master copy to be created at head office and distributed to all necessary users.

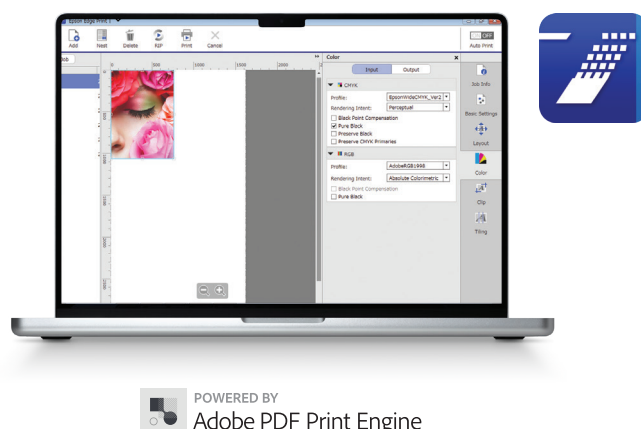
Edge Print

Epson's advanced image processing and production software combines traditional RIP functionality with a user-friendly interface and full on-screen visualisation.

Built on an Adobe print engine, Edge Print offers enhanced PDF handling, anti-aliasing, and transparency support.

Unlike traditional RIPs that support multiple vendors, Edge Print is specifically designed for Epson printers. It leverages our print modes, smallest dot sizing, advanced LUT tables, and half tone modules to produce output with reduced grain, and enhanced colour precision and accuracy.

Quick to learn and easy to use, each copy of Edge Print can drive up to four printers, and up to four copies can be installed on a single PC.



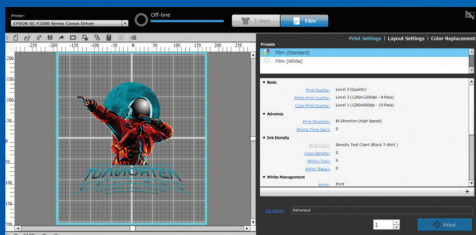
POWERED BY
Adobe PDF Print Engine

It integrates with Epson Edge Dashboard and Epson Cloud Solution PORT for comprehensive management and costing of print jobs.

Garment Creator

This software, included with SureColor DTG printers, streamlines the production of finished garments and film sheets for transfers. Simple and user-friendly, it offers on-screen visualisation tailored to specific platen sizes.

Garment Creator features a comprehensive toolset for design and production, allowing graphic imports, text additions and colour adjustments. It can directly drive compatible printers or generate output files for storage, recall and reprinting. Files can also be copied to a USB device for instant reproduction via a printer.



Print Automate

This software delivers high-quality imaging without requiring the original application program.

Users can print entire documents, parts of documents, or content from multiple documents to various media types, sizes and orientations.

It has a simple, intuitive interface that is suitable for users of all levels. It is especially beneficial for businesses handling large files, third-party files, and frequent reprints, streamlining workflow and enhancing productivity.

Order Controller

Developed for commercial use, this software offers a simple, efficient solution for professional photographers, photo studios, print-for-pay providers, event operators and retail stores.

Available in Lite for single-printer use and Full for multi-printer operations, it manages both single prints and multiple print jobs.



The Full version supports Epson SureLab printers and various SureColor P-Series models, combining basic image editing with advanced production management and costing tools. It can automatically direct jobs to specific printers based on image size and media type, and it optimises job splitting and load balancing for multiple SureLab printers. The Full version is provided as a site license tied to a specific location. It runs as a background application on a standalone PC or network server, with each copy driving up to four printers.

Print Layout

This software streamlines photo and graphic production on P-Series printers with a user-friendly interface compatible with Windows, macOS, and iOS.

Print Layout allows the compilation of multiple graphic and text elements. It includes advanced features such as black-and-white mode, panorama mode, and gallery wrap output.

It seamlessly integrates with Adobe Photoshop via a plug-in and supports ICC profiles.



Epson, PrecisionCore, SpectroProofer, SureColor, SureLab, UltraChrome, Epson CoverPlus are registered trademarks of Seiko Epson Corporation. All other product and brand names are trademarks and / or registered trademarks of their respective companies. Epson disclaims any and all rights in these marks. Copyright February 2025, Epson Australia Ltd. Product specifications are subject to change. Refer to www.epson.com.au or www.epson.co.nz for latest information.

Epson Australia Pty Ltd
www.epson.com.au

Epson New Zealand
www.epson.co.nz

05/2025

ABN: 91 002 625 783

EPSON